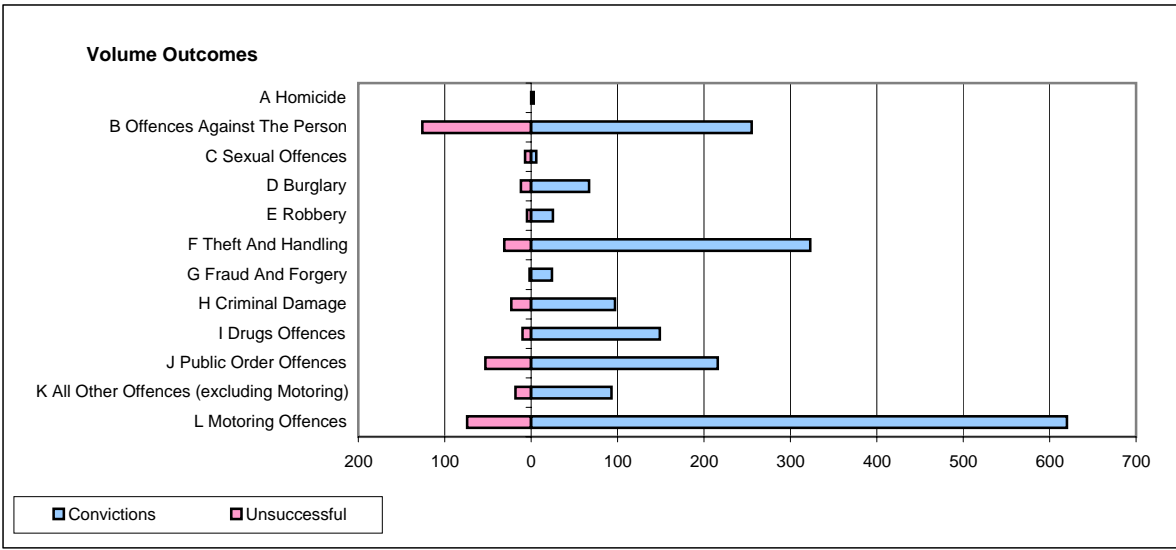
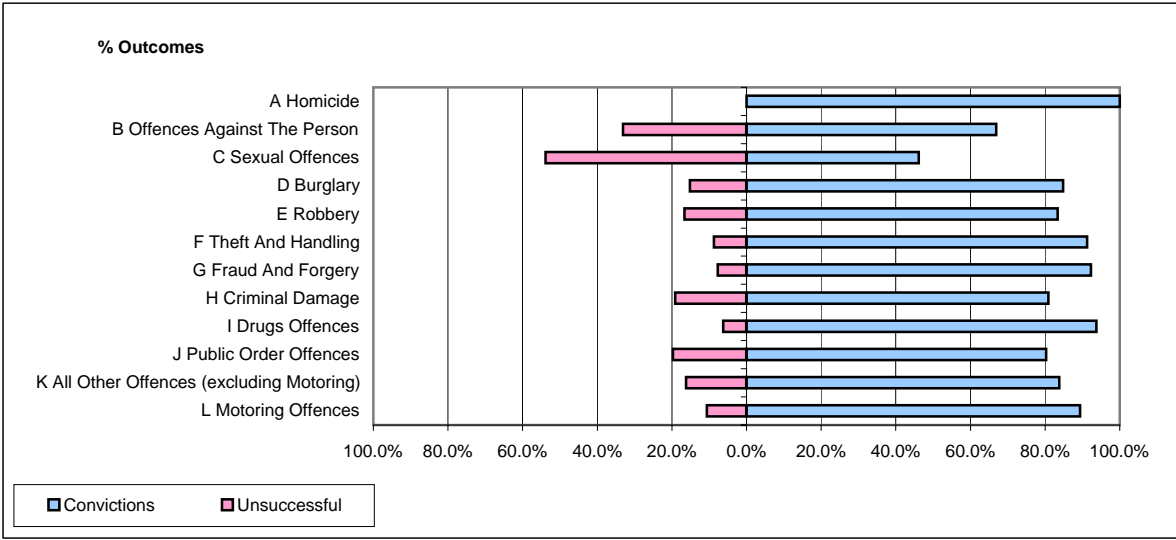


**CPS OUTCOMES BY PRINCIPAL OFFENCE CATEGORY**

**February 2007**

**P24-Merseyside**



	Convictions		Unsuccessful	
	Number of Defendants	%	Number of Defendants	%
<b>A Homicide</b>	<b>3</b>	<b>100.0%</b>	<b>0</b>	<b>0.0%</b>
<b>B Offences Against The Person</b>	<b>255</b>	<b>66.9%</b>	<b>126</b>	<b>33.1%</b>
<b>C Sexual Offences</b>	<b>6</b>	<b>46.2%</b>	<b>7</b>	<b>53.8%</b>
<b>D Burglary</b>	<b>67</b>	<b>84.8%</b>	<b>12</b>	<b>15.2%</b>
<b>E Robbery</b>	<b>25</b>	<b>83.3%</b>	<b>5</b>	<b>16.7%</b>
<b>F Theft And Handling</b>	<b>323</b>	<b>91.2%</b>	<b>31</b>	<b>8.8%</b>
<b>G Fraud And Forgery</b>	<b>24</b>	<b>92.3%</b>	<b>2</b>	<b>7.7%</b>
<b>H Criminal Damage</b>	<b>97</b>	<b>80.8%</b>	<b>23</b>	<b>19.2%</b>
<b>I Drugs Offences</b>	<b>149</b>	<b>93.7%</b>	<b>10</b>	<b>6.3%</b>
<b>J Public Order Offences</b>	<b>216</b>	<b>80.3%</b>	<b>53</b>	<b>19.7%</b>
<b>K All Other Offences (excluding Motoring)</b>	<b>93</b>	<b>83.8%</b>	<b>18</b>	<b>16.2%</b>
<b>L Motoring Offences</b>	<b>620</b>	<b>89.3%</b>	<b>74</b>	<b>10.7%</b>
<b>Admin Finalisations</b>	<b>0</b>	<b>0.0%</b>	<b>45</b>	<b>100.0%</b>
<b>TOTAL</b>	<b>1,878</b>	<b>82.2%</b>	<b>406</b>	<b>17.8%</b>