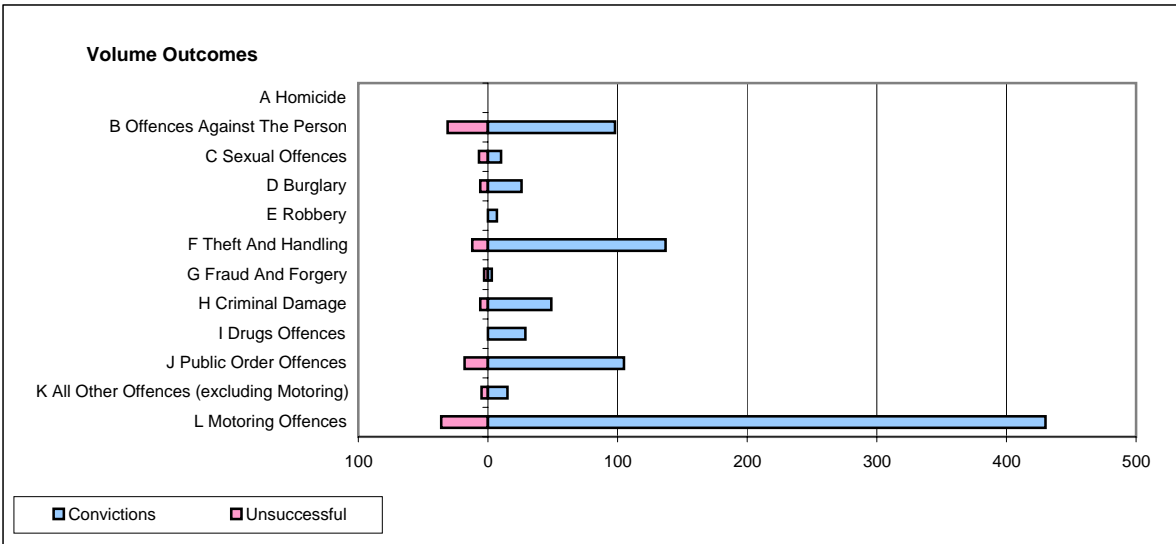
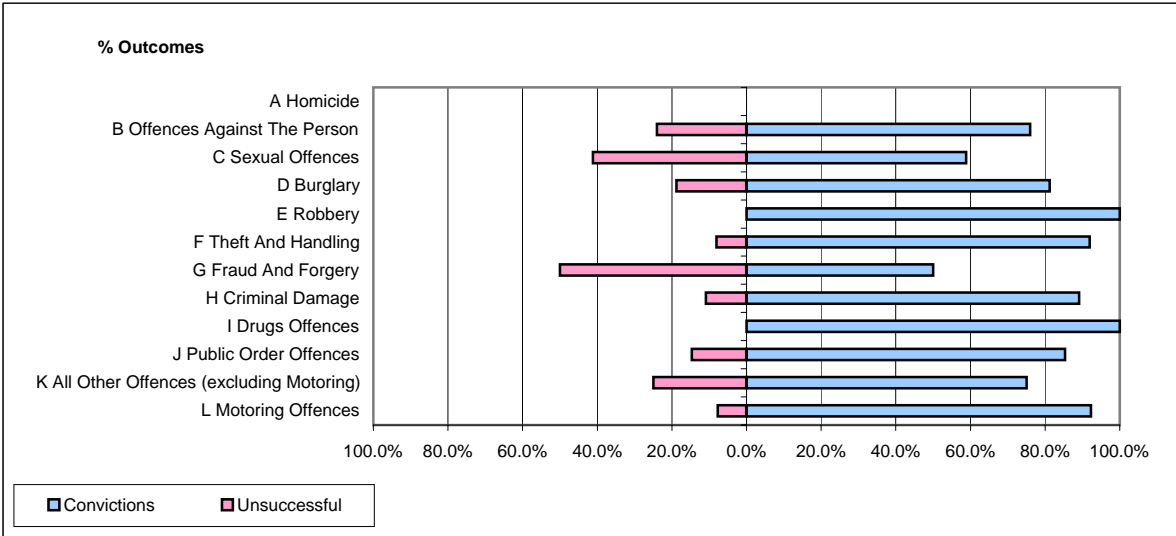


CPS OUTCOMES BY PRINCIPAL OFFENCE CATEGORY

February 2007

P23-Lincolnshire



	Convictions		Unsuccessful	
	Number of Defendants	%	Number of Defendants	%
A Homicide	0	#DIV/0!	0	#DIV/0!
B Offences Against The Person	98	76.0%	31	24.0%
C Sexual Offences	10	58.8%	7	41.2%
D Burglary	26	81.3%	6	18.8%
E Robbery	7	100.0%	0	0.0%
F Theft And Handling	137	91.9%	12	8.1%
G Fraud And Forgery	3	50.0%	3	50.0%
H Criminal Damage	49	89.1%	6	10.9%
I Drugs Offences	29	100.0%	0	0.0%
J Public Order Offences	105	85.4%	18	14.6%
K All Other Offences (excluding Motoring)	15	75.0%	5	25.0%
L Motoring Offences	430	92.3%	36	7.7%
Admin Finalisations	0	0.0%	7	100.0%
TOTAL	909	87.4%	131	12.6%