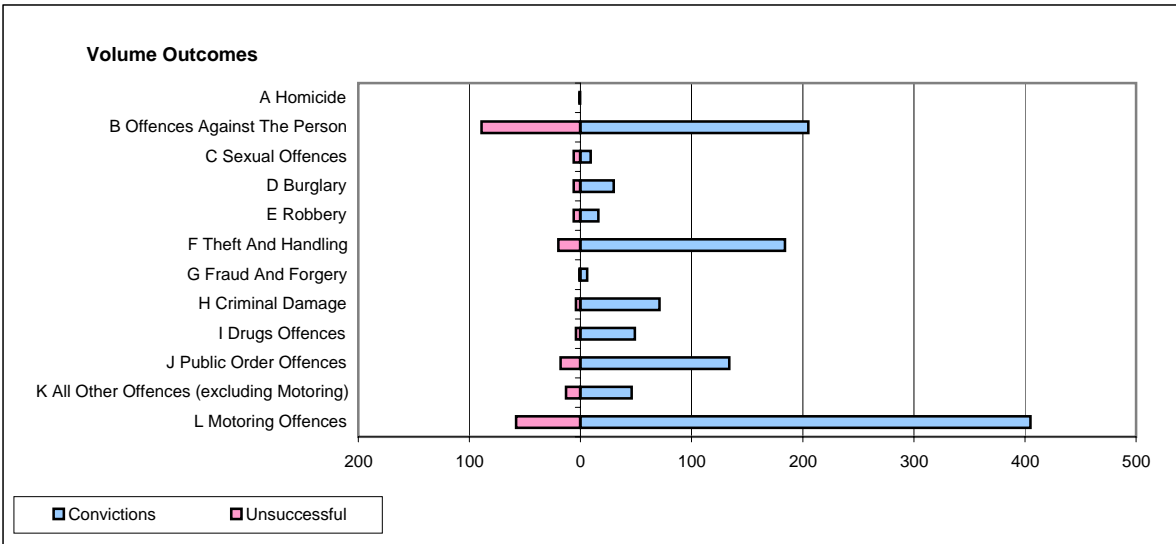
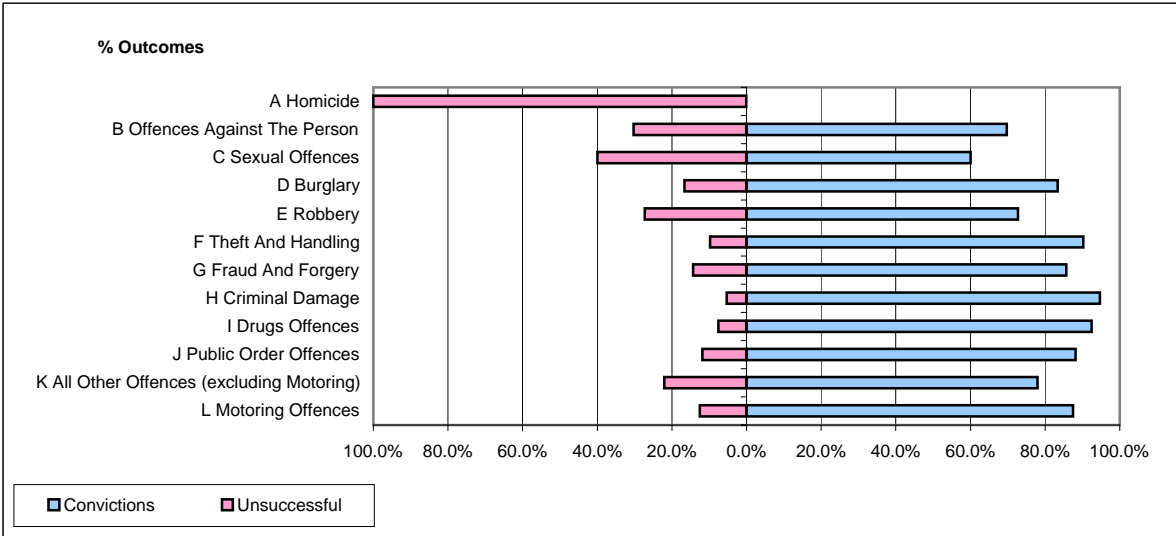


CPS OUTCOMES BY PRINCIPAL OFFENCE CATEGORY

February 2007

P22-Leicestershire



	Convictions		Unsuccessful	
	Number of Defendants	%	Number of Defendants	%
A Homicide	0	0.0%	1	100.0%
B Offences Against The Person	205	69.7%	89	30.3%
C Sexual Offences	9	60.0%	6	40.0%
D Burglary	30	83.3%	6	16.7%
E Robbery	16	72.7%	6	27.3%
F Theft And Handling	184	90.2%	20	9.8%
G Fraud And Forgery	6	85.7%	1	14.3%
H Criminal Damage	71	94.7%	4	5.3%
I Drugs Offences	49	92.5%	4	7.5%
J Public Order Offences	134	88.2%	18	11.8%
K All Other Offences (excluding Motoring)	46	78.0%	13	22.0%
L Motoring Offences	405	87.5%	58	12.5%
Admin Finalisations	0	0.0%	44	100.0%
TOTAL	1,155	81.1%	270	18.9%