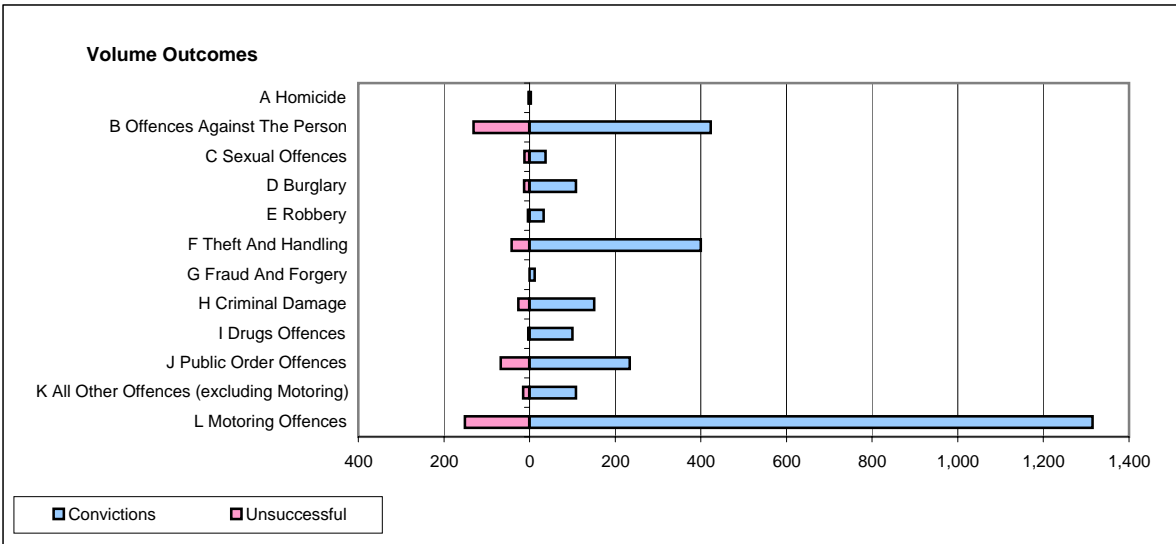
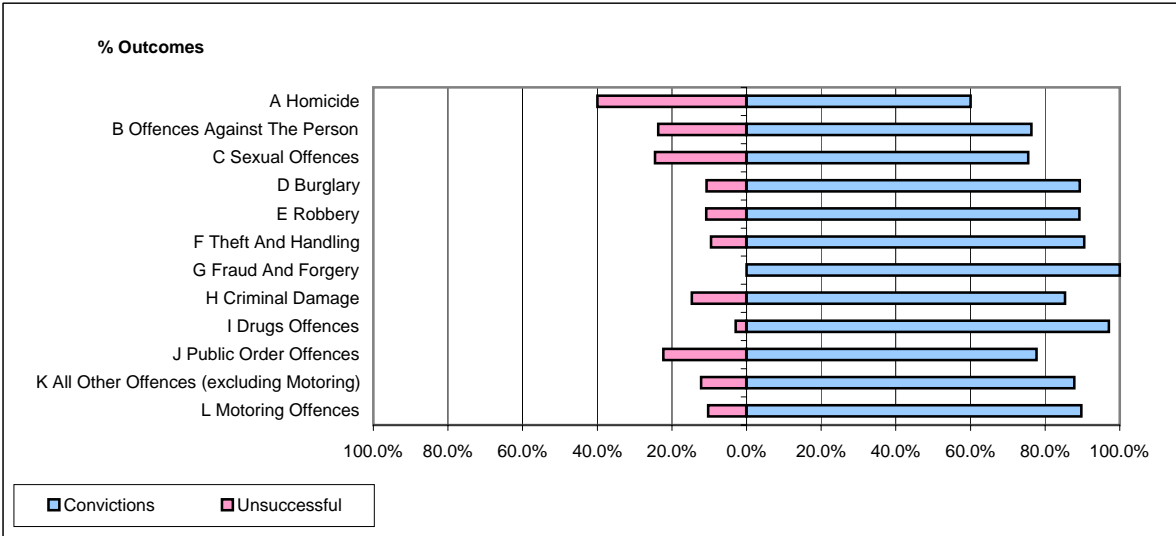


**CPS OUTCOMES BY PRINCIPAL OFFENCE CATEGORY**

**February 2007**

**P21-Lancashire**



	Convictions		Unsuccessful	
	Number of Defendants	%	Number of Defendants	%
<b>A Homicide</b>	<b>3</b>	<b>60.0%</b>	<b>2</b>	<b>40.0%</b>
<b>B Offences Against The Person</b>	<b>423</b>	<b>76.4%</b>	<b>131</b>	<b>23.6%</b>
<b>C Sexual Offences</b>	<b>37</b>	<b>75.5%</b>	<b>12</b>	<b>24.5%</b>
<b>D Burglary</b>	<b>108</b>	<b>89.3%</b>	<b>13</b>	<b>10.7%</b>
<b>E Robbery</b>	<b>33</b>	<b>89.2%</b>	<b>4</b>	<b>10.8%</b>
<b>F Theft And Handling</b>	<b>400</b>	<b>90.5%</b>	<b>42</b>	<b>9.5%</b>
<b>G Fraud And Forgery</b>	<b>12</b>	<b>100.0%</b>	<b>0</b>	<b>0.0%</b>
<b>H Criminal Damage</b>	<b>151</b>	<b>85.3%</b>	<b>26</b>	<b>14.7%</b>
<b>I Drugs Offences</b>	<b>100</b>	<b>97.1%</b>	<b>3</b>	<b>2.9%</b>
<b>J Public Order Offences</b>	<b>234</b>	<b>77.7%</b>	<b>67</b>	<b>22.3%</b>
<b>K All Other Offences (excluding Motoring)</b>	<b>108</b>	<b>87.8%</b>	<b>15</b>	<b>12.2%</b>
<b>L Motoring Offences</b>	<b>1,315</b>	<b>89.7%</b>	<b>151</b>	<b>10.3%</b>
<b>Admin Finalisations</b>	<b>0</b>	<b>0.0%</b>	<b>40</b>	<b>100.0%</b>
<b>TOTAL</b>	<b>2,924</b>	<b>85.2%</b>	<b>506</b>	<b>14.8%</b>