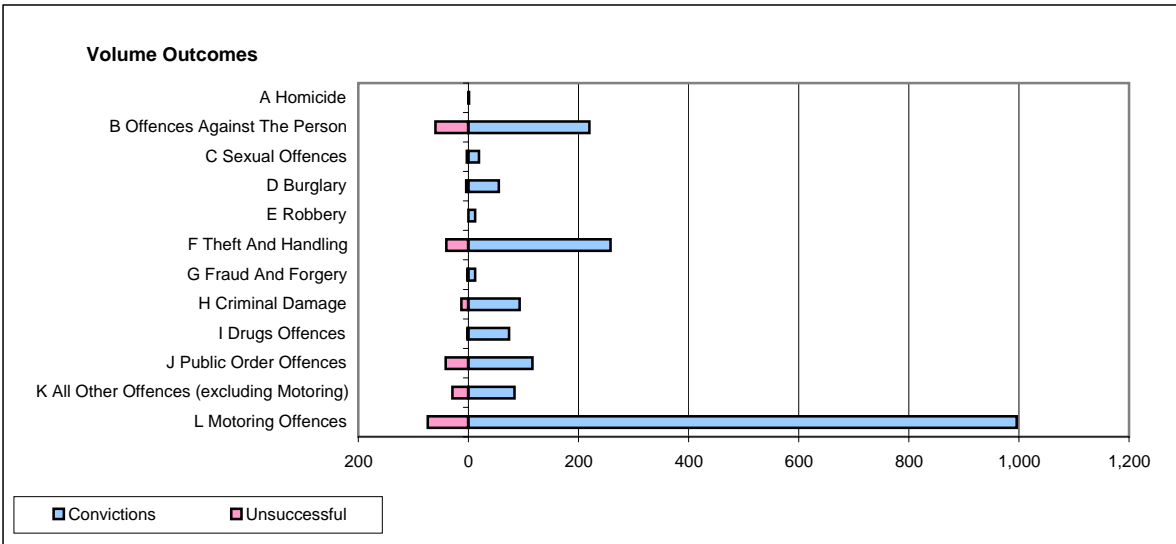
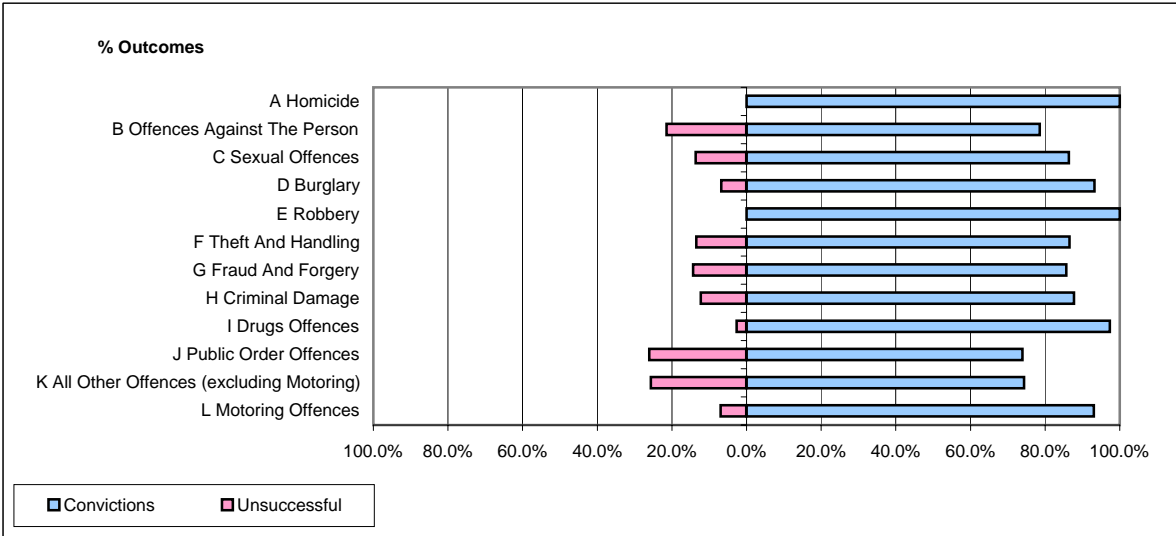


**CPS OUTCOMES BY PRINCIPAL OFFENCE CATEGORY**

**February 2007**

**P20-Kent**



	Convictions		Unsuccessful	
	Number of Defendants	%	Number of Defendants	%
<b>A Homicide</b>	<b>1</b>	<b>100.0%</b>	<b>0</b>	<b>0.0%</b>
<b>B Offences Against The Person</b>	<b>220</b>	<b>78.6%</b>	<b>60</b>	<b>21.4%</b>
<b>C Sexual Offences</b>	<b>19</b>	<b>86.4%</b>	<b>3</b>	<b>13.6%</b>
<b>D Burglary</b>	<b>55</b>	<b>93.2%</b>	<b>4</b>	<b>6.8%</b>
<b>E Robbery</b>	<b>12</b>	<b>100.0%</b>	<b>0</b>	<b>0.0%</b>
<b>F Theft And Handling</b>	<b>258</b>	<b>86.6%</b>	<b>40</b>	<b>13.4%</b>
<b>G Fraud And Forgery</b>	<b>12</b>	<b>85.7%</b>	<b>2</b>	<b>14.3%</b>
<b>H Criminal Damage</b>	<b>93</b>	<b>87.7%</b>	<b>13</b>	<b>12.3%</b>
<b>I Drugs Offences</b>	<b>74</b>	<b>97.4%</b>	<b>2</b>	<b>2.6%</b>
<b>J Public Order Offences</b>	<b>116</b>	<b>73.9%</b>	<b>41</b>	<b>26.1%</b>
<b>K All Other Offences (excluding Motoring)</b>	<b>84</b>	<b>74.3%</b>	<b>29</b>	<b>25.7%</b>
<b>L Motoring Offences</b>	<b>996</b>	<b>93.1%</b>	<b>74</b>	<b>6.9%</b>
<b>Admin Finalisations</b>	<b>0</b>	<b>0.0%</b>	<b>33</b>	<b>100.0%</b>
<b>TOTAL</b>	<b>1,940</b>	<b>86.6%</b>	<b>301</b>	<b>13.4%</b>