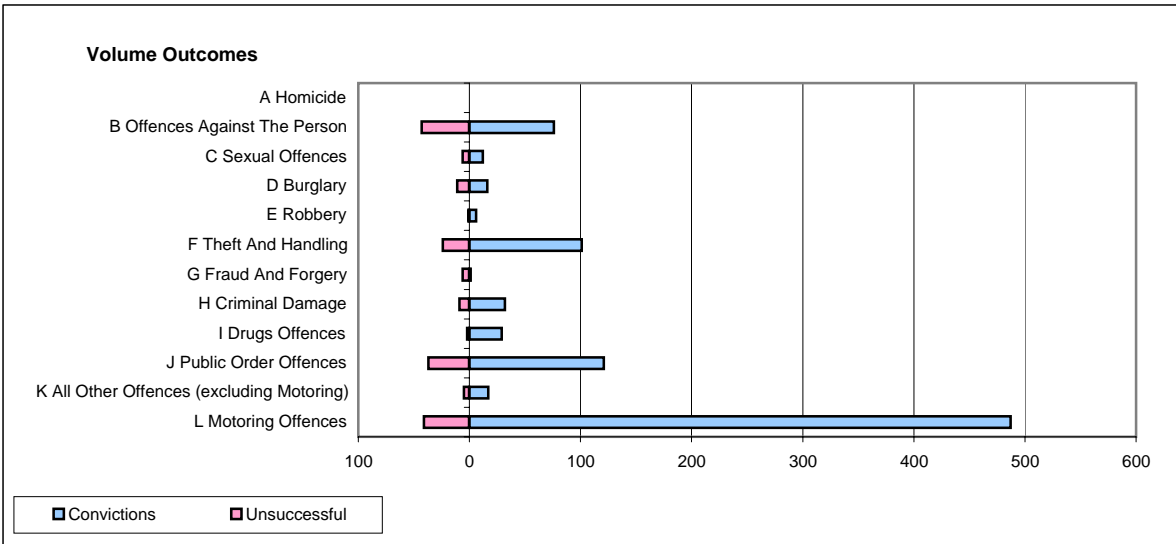
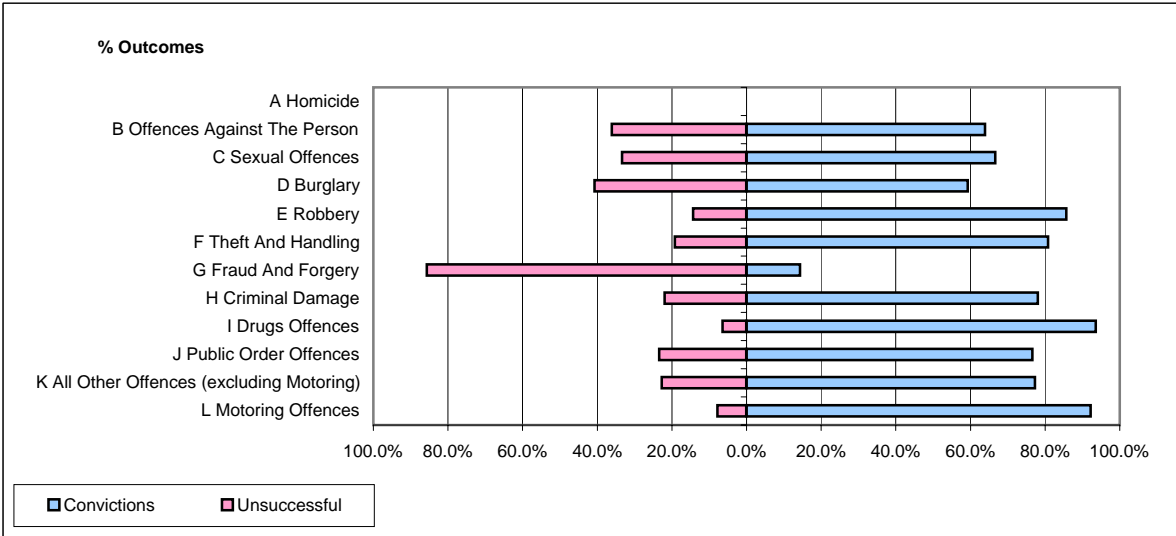


CPS OUTCOMES BY PRINCIPAL OFFENCE CATEGORY

February 2007

P16-Gwent



	Convictions		Unsuccessful	
	Number of Defendants	%	Number of Defendants	%
A Homicide	0	#DIV/0!	0	#DIV/0!
B Offences Against The Person	76	63.9%	43	36.1%
C Sexual Offences	12	66.7%	6	33.3%
D Burglary	16	59.3%	11	40.7%
E Robbery	6	85.7%	1	14.3%
F Theft And Handling	101	80.8%	24	19.2%
G Fraud And Forgery	1	14.3%	6	85.7%
H Criminal Damage	32	78.0%	9	22.0%
I Drugs Offences	29	93.5%	2	6.5%
J Public Order Offences	121	76.6%	37	23.4%
K All Other Offences (excluding Motoring)	17	77.3%	5	22.7%
L Motoring Offences	487	92.2%	41	7.8%
Admin Finalisations	0	0.0%	19	100.0%
TOTAL	898	81.5%	204	18.5%