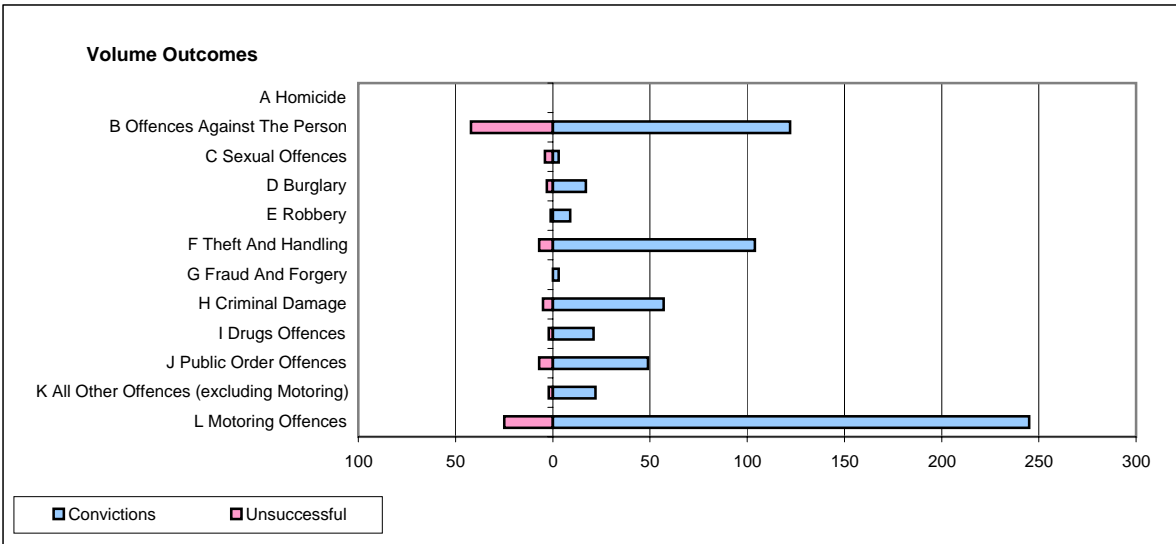
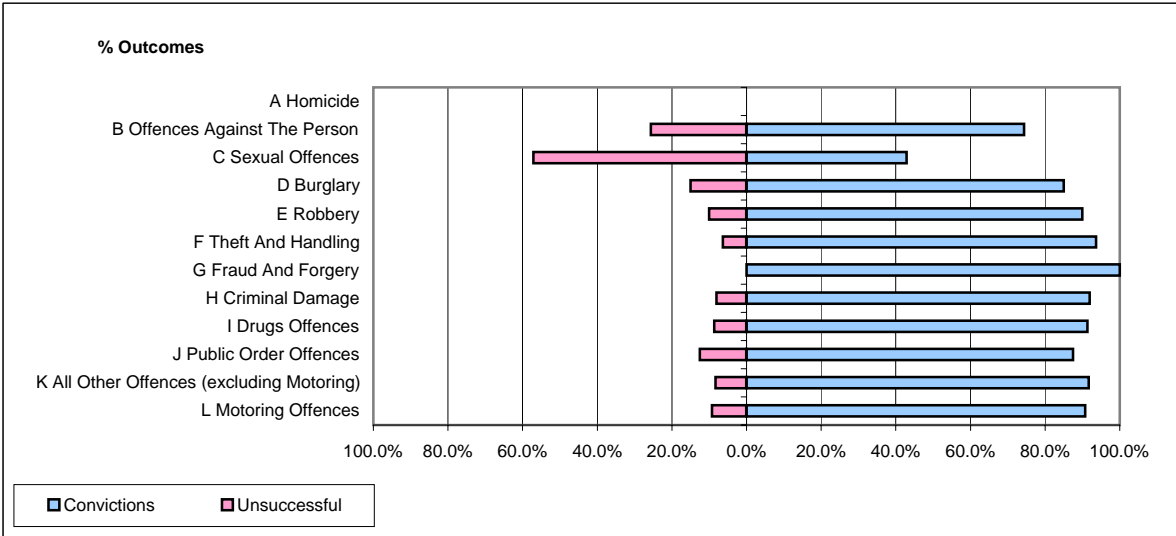


CPS OUTCOMES BY PRINCIPAL OFFENCE CATEGORY

February 2007

P14-Gloucestershire



	Convictions		Unsuccessful	
	Number of Defendants	%	Number of Defendants	%
A Homicide	0	#DIV/0!	0	#DIV/0!
B Offences Against The Person	122	74.4%	42	25.6%
C Sexual Offences	3	42.9%	4	57.1%
D Burglary	17	85.0%	3	15.0%
E Robbery	9	90.0%	1	10.0%
F Theft And Handling	104	93.7%	7	6.3%
G Fraud And Forgery	3	100.0%	0	0.0%
H Criminal Damage	57	91.9%	5	8.1%
I Drugs Offences	21	91.3%	2	8.7%
J Public Order Offences	49	87.5%	7	12.5%
K All Other Offences (excluding Motoring)	22	91.7%	2	8.3%
L Motoring Offences	245	90.7%	25	9.3%
Admin Finalisations	0	0.0%	25	100.0%
TOTAL	652	84.1%	123	15.9%