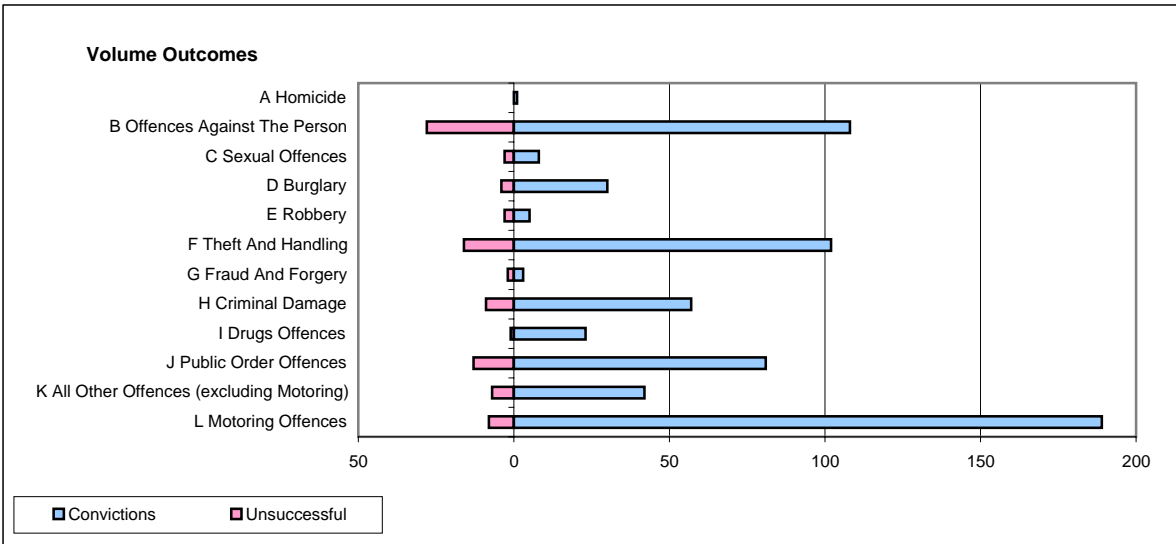
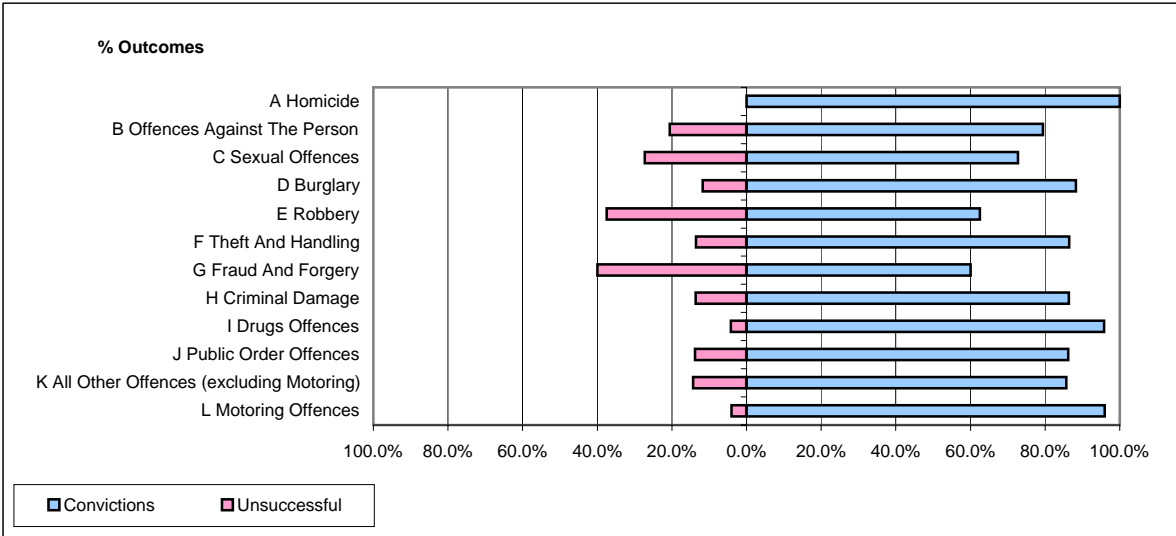


CPS OUTCOMES BY PRINCIPAL OFFENCE CATEGORY

February 2007

P11-Durham



	Convictions		Unsuccessful	
	Number of Defendants	%	Number of Defendants	%
A Homicide	1	100.0%	0	0.0%
B Offences Against The Person	108	79.4%	28	20.6%
C Sexual Offences	8	72.7%	3	27.3%
D Burglary	30	88.2%	4	11.8%
E Robbery	5	62.5%	3	37.5%
F Theft And Handling	102	86.4%	16	13.6%
G Fraud And Forgery	3	60.0%	2	40.0%
H Criminal Damage	57	86.4%	9	13.6%
I Drugs Offences	23	95.8%	1	4.2%
J Public Order Offences	81	86.2%	13	13.8%
K All Other Offences (excluding Motoring)	42	85.7%	7	14.3%
L Motoring Offences	189	95.9%	8	4.1%
Admin Finalisations	0	0.0%	15	100.0%
TOTAL	649	85.6%	109	14.4%