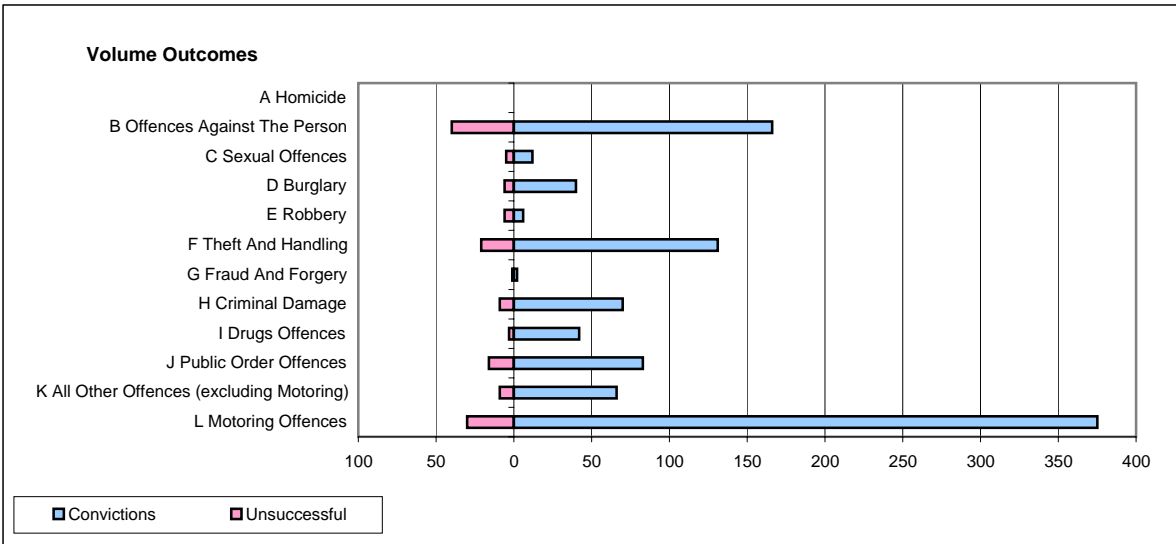
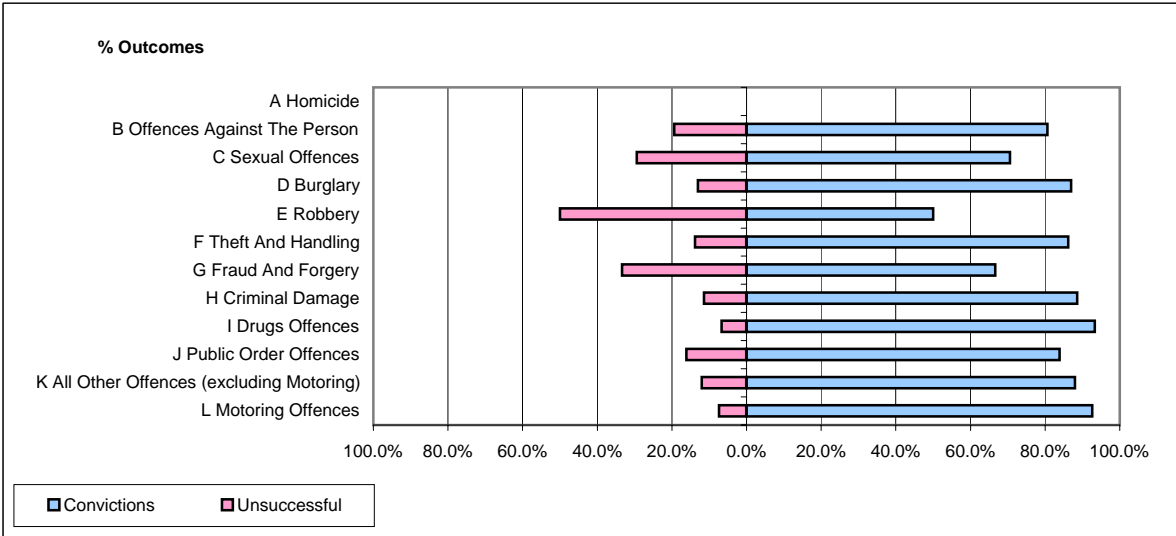


CPS OUTCOMES BY PRINCIPAL OFFENCE CATEGORY

February 2007

P08-Derbyshire



	Convictions		Unsuccessful	
	Number of Defendants	%	Number of Defendants	%
A Homicide	0	#DIV/0!	0	#DIV/0!
B Offences Against The Person	166	80.6%	40	19.4%
C Sexual Offences	12	70.6%	5	29.4%
D Burglary	40	87.0%	6	13.0%
E Robbery	6	50.0%	6	50.0%
F Theft And Handling	131	86.2%	21	13.8%
G Fraud And Forgery	2	66.7%	1	33.3%
H Criminal Damage	70	88.6%	9	11.4%
I Drugs Offences	42	93.3%	3	6.7%
J Public Order Offences	83	83.8%	16	16.2%
K All Other Offences (excluding Motoring)	66	88.0%	9	12.0%
L Motoring Offences	375	92.6%	30	7.4%
Admin Finalisations	0	0.0%	14	100.0%
TOTAL	993	86.1%	160	13.9%