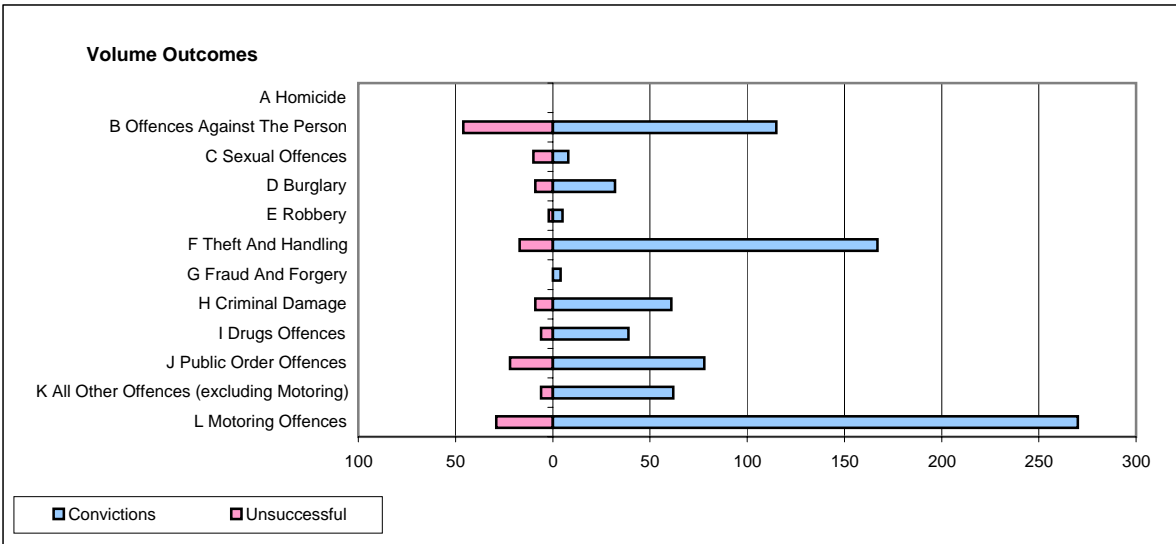
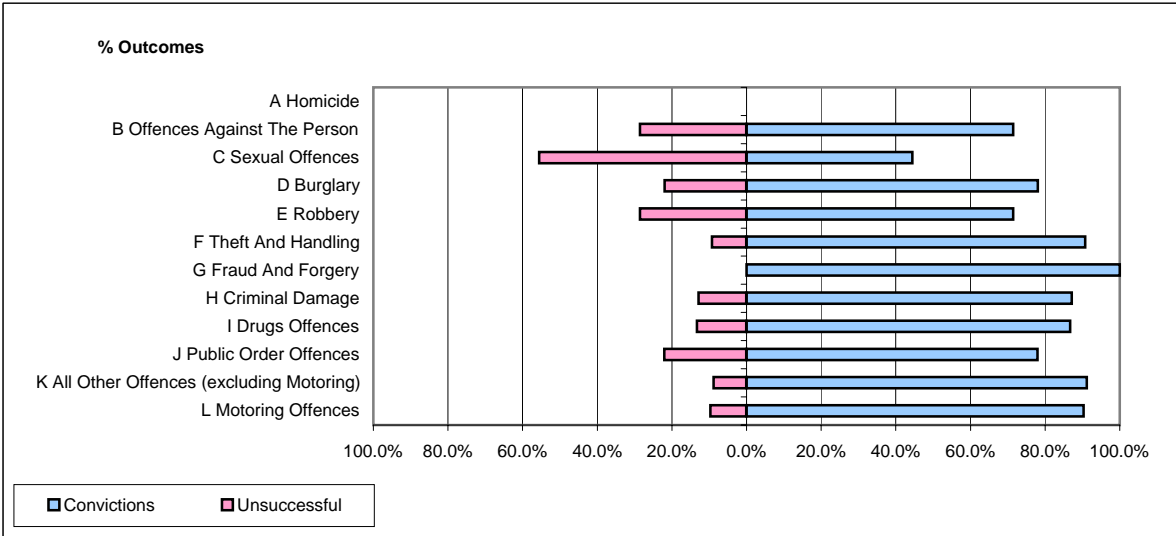


CPS OUTCOMES BY PRINCIPAL OFFENCE CATEGORY

February 2007

P06-Cleveland



	Convictions		Unsuccessful	
	Number of Defendants	%	Number of Defendants	%
A Homicide	0	#DIV/0!	0	#DIV/0!
B Offences Against The Person	115	71.4%	46	28.6%
C Sexual Offences	8	44.4%	10	55.6%
D Burglary	32	78.0%	9	22.0%
E Robbery	5	71.4%	2	28.6%
F Theft And Handling	167	90.8%	17	9.2%
G Fraud And Forgery	4	100.0%	0	0.0%
H Criminal Damage	61	87.1%	9	12.9%
I Drugs Offences	39	86.7%	6	13.3%
J Public Order Offences	78	78.0%	22	22.0%
K All Other Offences (excluding Motoring)	62	91.2%	6	8.8%
L Motoring Offences	270	90.3%	29	9.7%
Admin Finalisations	0	0.0%	12	100.0%
TOTAL	841	83.3%	168	16.7%