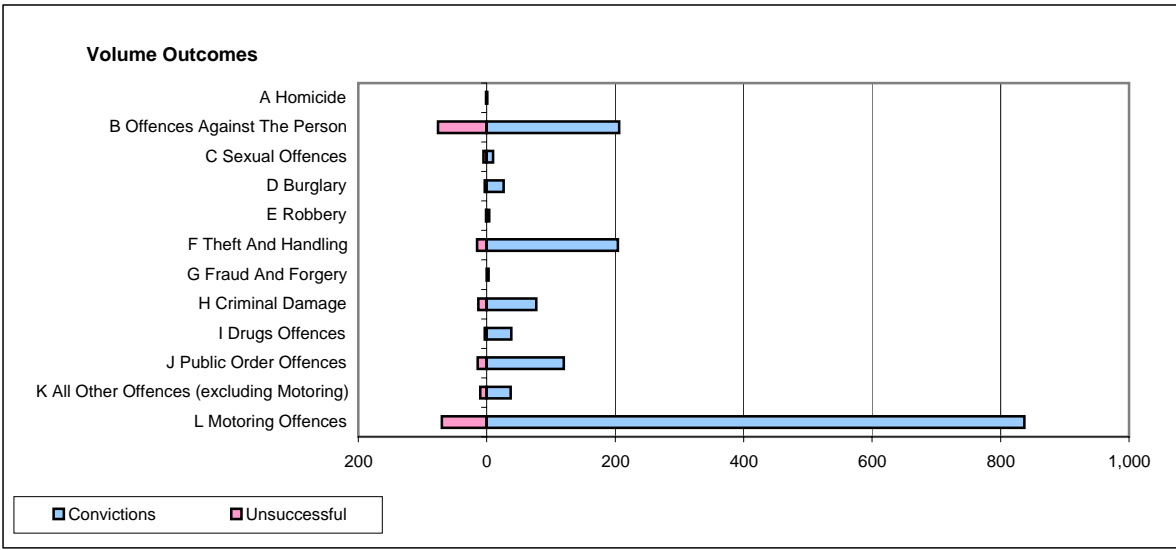
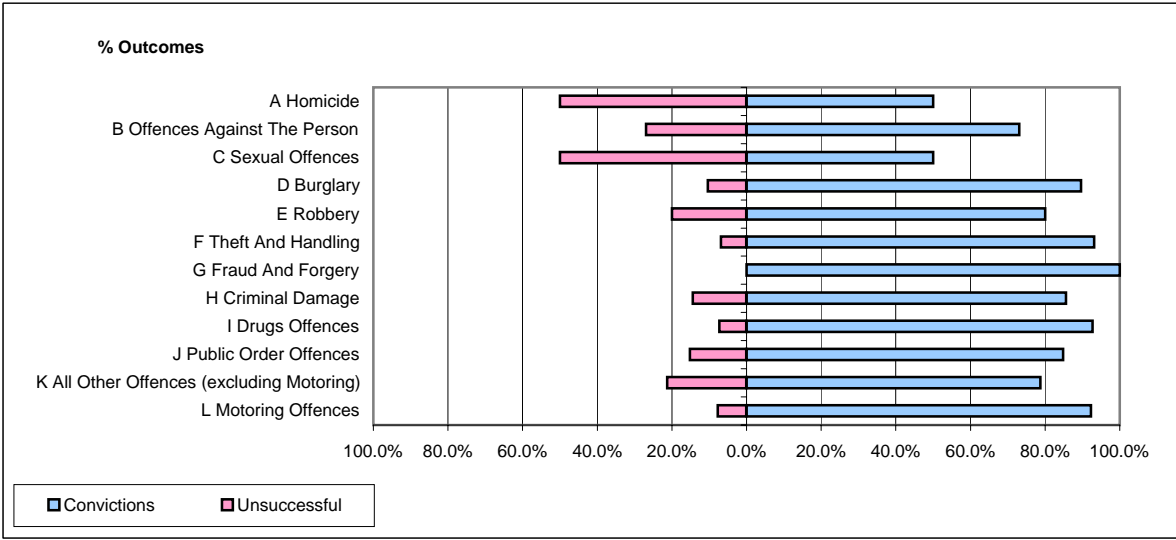


CPS OUTCOMES BY PRINCIPAL OFFENCE CATEGORY

February 2007

P04-Cheshire



	Convictions		Unsuccessful	
	Number of Defendants	%	Number of Defendants	%
A Homicide	1	50.0%	1	50.0%
B Offences Against The Person	206	73.0%	76	27.0%
C Sexual Offences	10	50.0%	5	50.0%
D Burglary	26	89.7%	3	10.3%
E Robbery	4	80.0%	1	20.0%
F Theft And Handling	204	93.2%	15	6.8%
G Fraud And Forgery	3	100.0%	0	0.0%
H Criminal Damage	77	85.6%	13	14.4%
I Drugs Offences	38	92.7%	3	7.3%
J Public Order Offences	120	84.8%	14	15.2%
K All Other Offences (excluding Motoring)	37	78.7%	10	21.3%
L Motoring Offences	837	92.3%	70	7.7%
Admin Finalisations	0	0.0%	21	100.0%
TOTAL	1,563	87.1%	232	12.9%