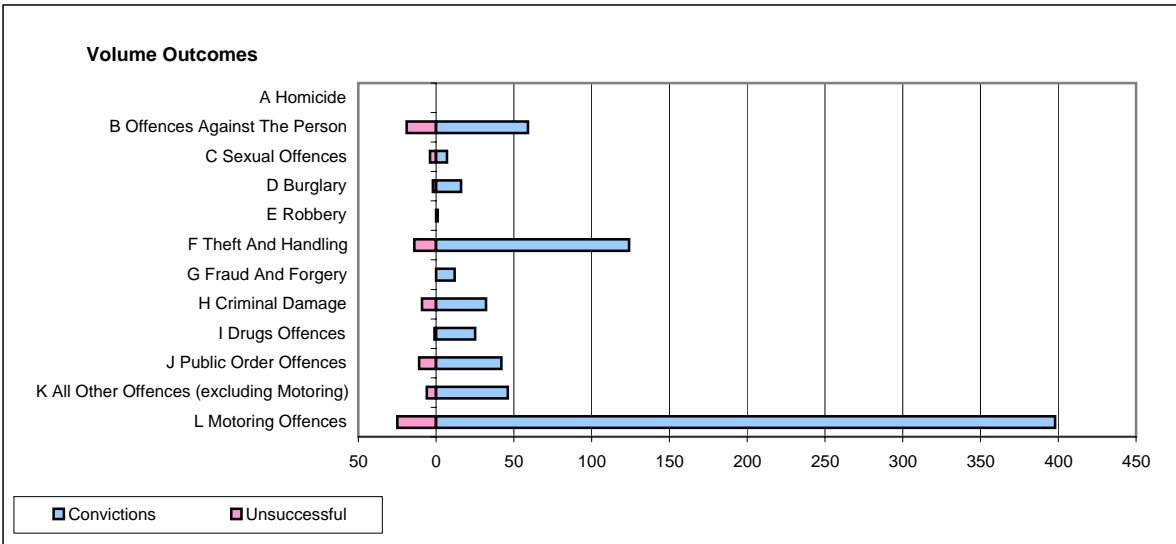
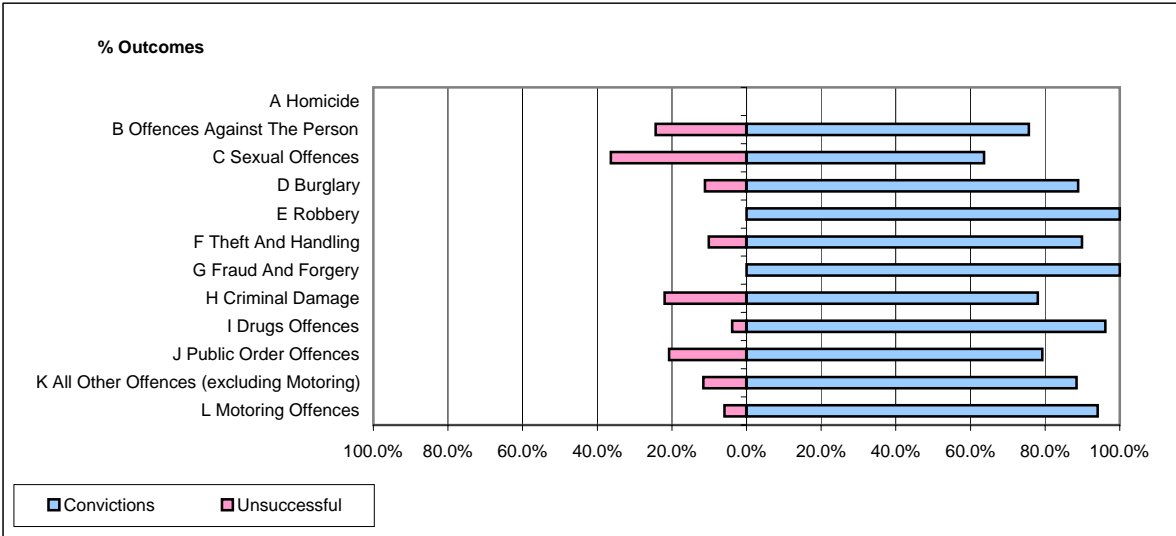


CPS OUTCOMES BY PRINCIPAL OFFENCE CATEGORY

February 2007

P02-Bedfordshire



	Convictions		Unsuccessful	
	Number of Defendants	%	Number of Defendants	%
A Homicide	0	#DIV/0!	0	#DIV/0!
B Offences Against The Person	59	75.6%	19	24.4%
C Sexual Offences	7	63.6%	4	36.4%
D Burglary	16	88.9%	2	11.1%
E Robbery	1	100.0%	0	0.0%
F Theft And Handling	124	89.9%	14	10.1%
G Fraud And Forgery	12	100.0%	0	0.0%
H Criminal Damage	32	78.0%	9	22.0%
I Drugs Offences	25	96.2%	1	3.8%
J Public Order Offences	42	79.2%	11	20.8%
K All Other Offences (excluding Motoring)	46	88.5%	6	11.5%
L Motoring Offences	398	94.1%	25	5.9%
Admin Finalisations	0	0.0%	12	100.0%
TOTAL	762	88.1%	103	11.9%