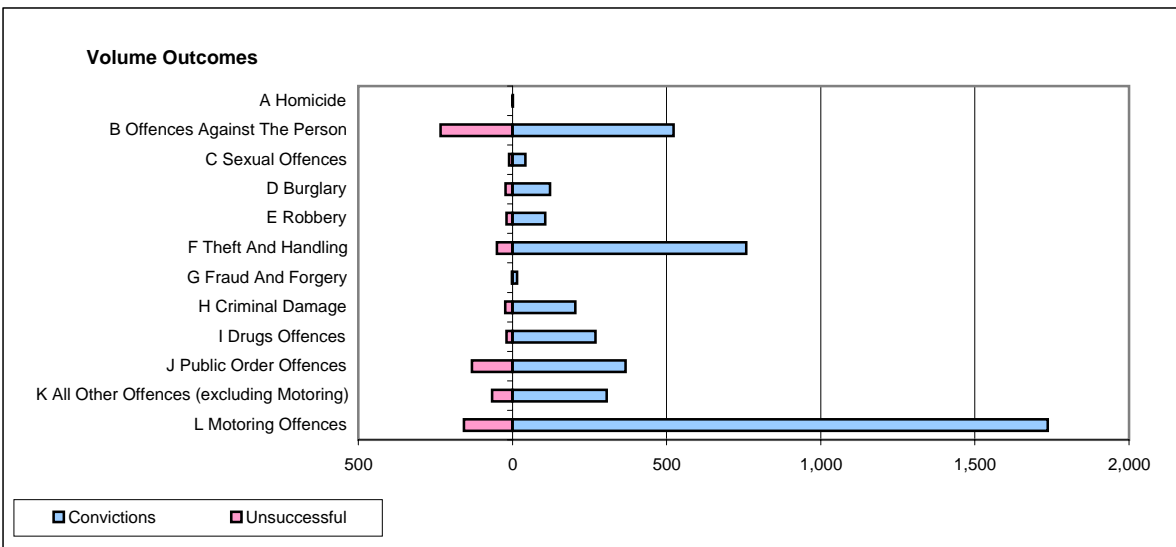
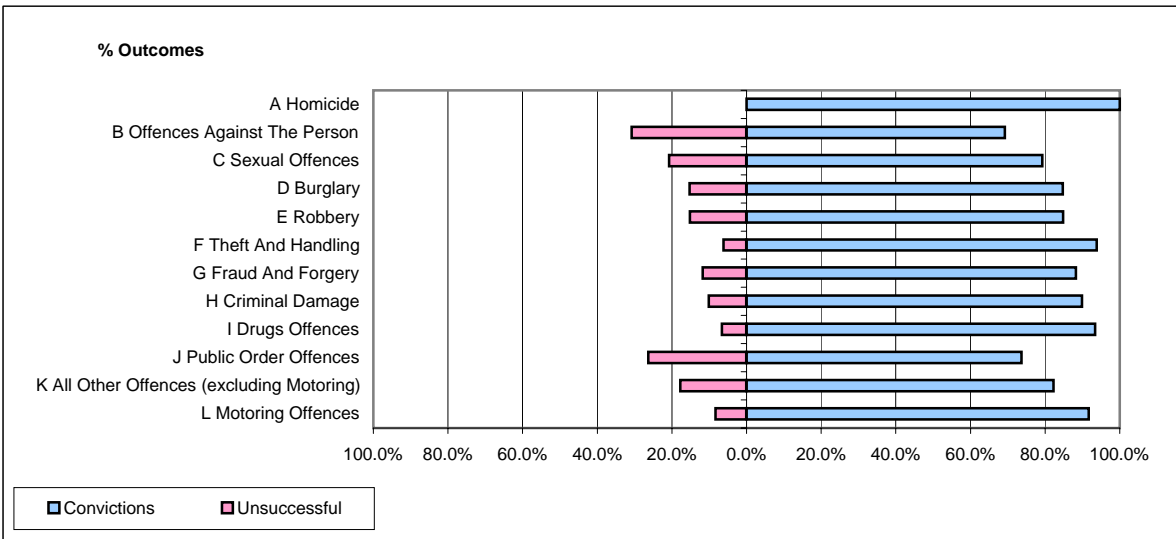


**CPS OUTCOMES BY PRINCIPAL OFFENCE CATEGORY**

January 2007

**P41-WestMidlands**



	Convictions		Unsuccessful	
	Number of Defendants	%	Number of Defendants	%
<b>A Homicide</b>	1	100.0%	0	0.0%
<b>B Offences Against The Person</b>	523	69.2%	233	30.8%
<b>C Sexual Offences</b>	42	79.2%	11	20.8%
<b>D Burglary</b>	122	84.7%	22	15.3%
<b>E Robbery</b>	106	84.8%	19	15.2%
<b>F Theft And Handling</b>	758	93.8%	50	6.2%
<b>G Fraud And Forgery</b>	15	88.2%	2	11.8%
<b>H Criminal Damage</b>	204	89.9%	23	10.1%
<b>I Drugs Offences</b>	269	93.4%	19	6.6%
<b>J Public Order Offences</b>	367	73.7%	131	26.3%
<b>K All Other Offences (excluding Motoring)</b>	306	82.3%	66	17.7%
<b>L Motoring Offences</b>	1,736	91.7%	157	8.3%
<b>Admin Finalisations</b>	0	0.0%	90	100.0%
<b>TOTAL</b>	<b>4,449</b>	<b>84.4%</b>	<b>823</b>	<b>15.6%</b>