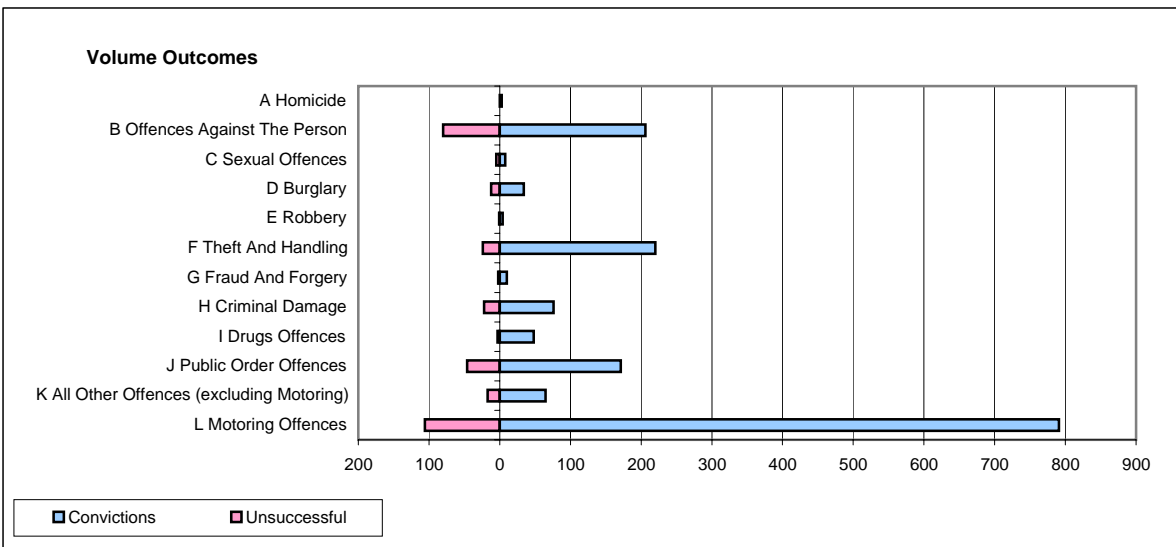
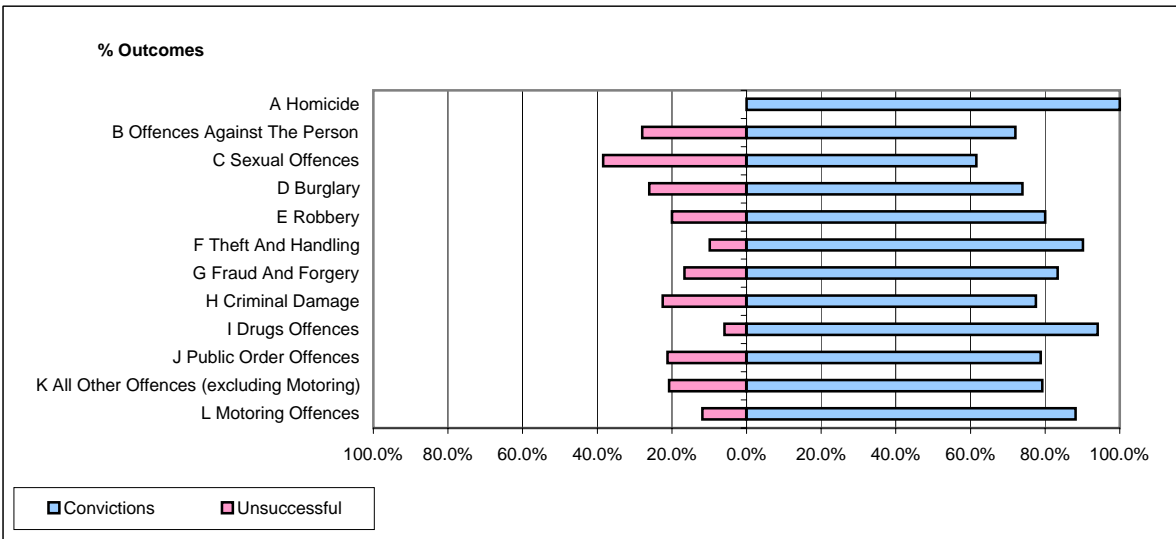


CPS OUTCOMES BY PRINCIPAL OFFENCE CATEGORY

January 2007

P40-WestMercia



	Convictions		Unsuccessful	
	Number of Defendants	%	Number of Defendants	%
A Homicide	3	100.0%	0	0.0%
B Offences Against The Person	206	72.0%	80	28.0%
C Sexual Offences	8	61.5%	5	38.5%
D Burglary	34	73.9%	12	26.1%
E Robbery	4	80.0%	1	20.0%
F Theft And Handling	220	90.2%	24	9.8%
G Fraud And Forgery	10	83.3%	2	16.7%
H Criminal Damage	76	77.6%	22	22.4%
I Drugs Offences	48	94.1%	3	5.9%
J Public Order Offences	171	78.8%	46	21.2%
K All Other Offences (excluding Motoring)	65	79.3%	17	20.7%
L Motoring Offences	791	88.2%	106	11.8%
Admin Finalisations	0	0.0%	41	100.0%
TOTAL	1,636	82.0%	359	18.0%