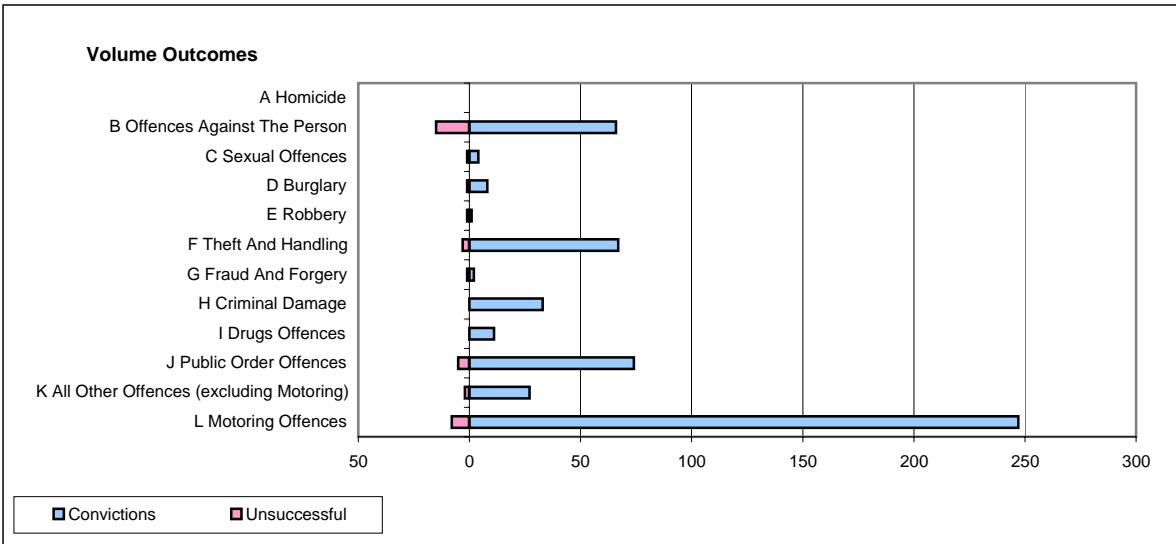
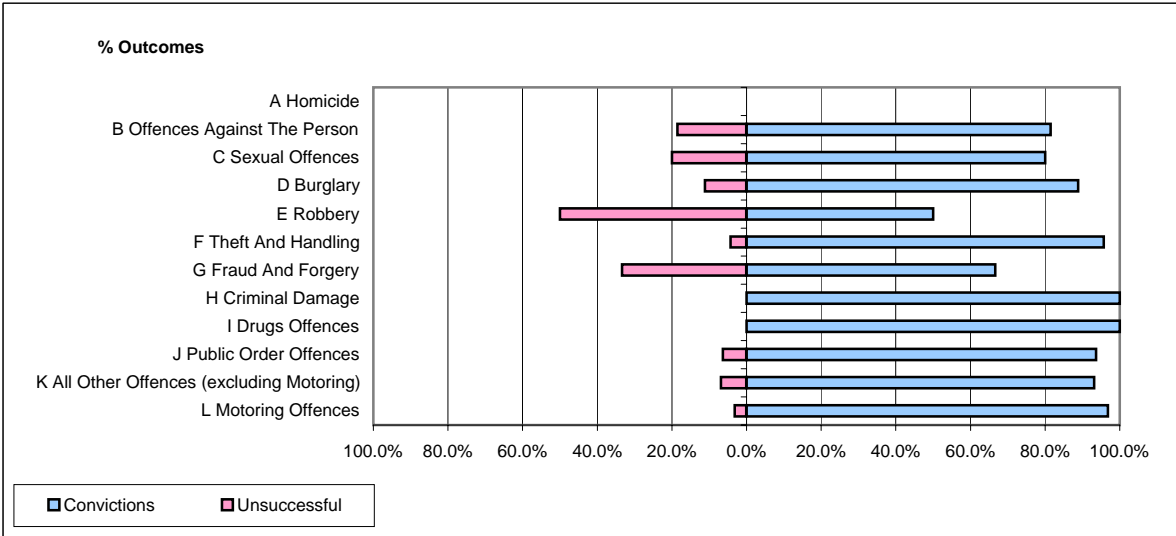


CPS OUTCOMES BY PRINCIPAL OFFENCE CATEGORY

January 2007

P39-Warwickshire



	Convictions		Unsuccessful	
	Number of Defendants	%	Number of Defendants	%
A Homicide	0	#DIV/0!	0	#DIV/0!
B Offences Against The Person	66	81.5%	15	18.5%
C Sexual Offences	4	80.0%	1	20.0%
D Burglary	8	88.9%	1	11.1%
E Robbery	1	50.0%	1	50.0%
F Theft And Handling	67	95.7%	3	4.3%
G Fraud And Forgery	2	66.7%	1	33.3%
H Criminal Damage	33	100.0%	0	0.0%
I Drugs Offences	11	100.0%	0	0.0%
J Public Order Offences	74	93.7%	5	6.3%
K All Other Offences (excluding Motoring)	27	93.1%	2	6.9%
L Motoring Offences	247	96.9%	8	3.1%
Admin Finalisations	0	0.0%	11	100.0%
TOTAL	540	91.8%	48	8.2%