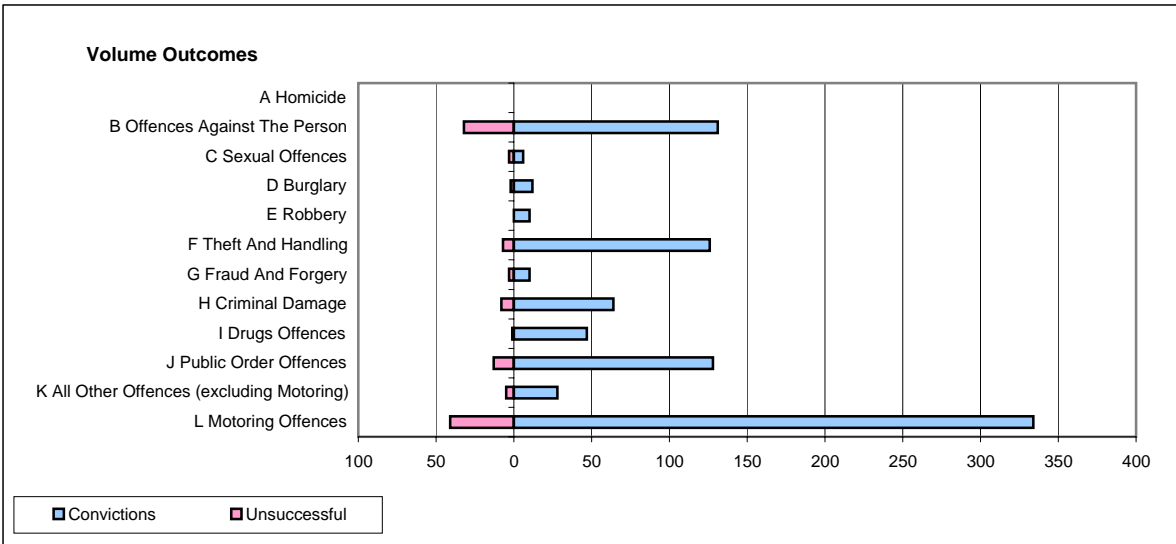
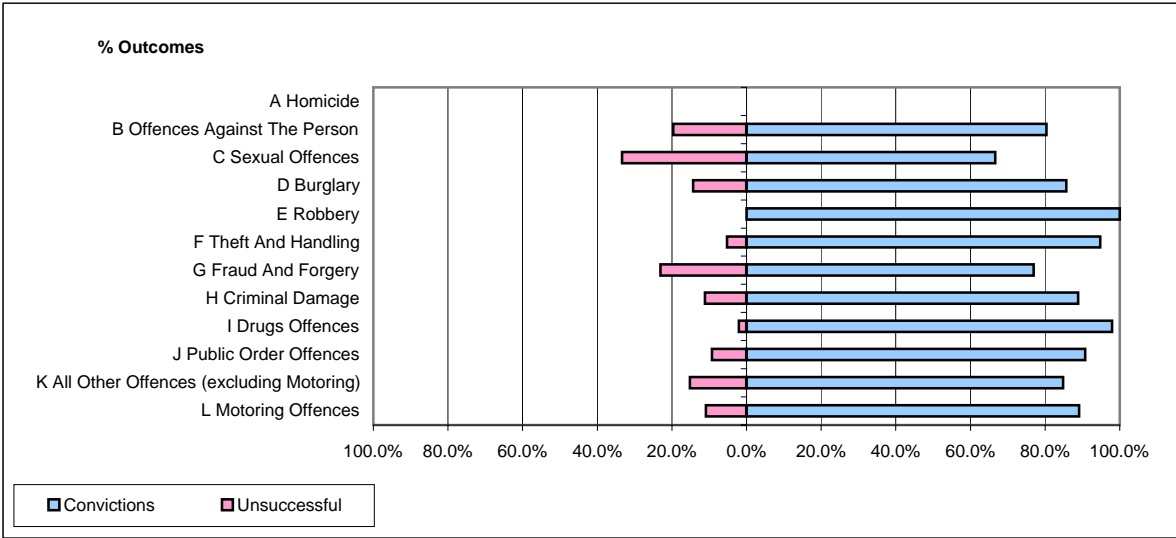


**CPS OUTCOMES BY PRINCIPAL OFFENCE CATEGORY**

January 2007

**P35-Suffolk**



	Convictions		Unsuccessful	
	Number of Defendants	%	Number of Defendants	%
<b>A Homicide</b>	0	#DIV/0!	0	#DIV/0!
<b>B Offences Against The Person</b>	131	80.4%	32	19.6%
<b>C Sexual Offences</b>	6	66.7%	3	33.3%
<b>D Burglary</b>	12	85.7%	2	14.3%
<b>E Robbery</b>	10	100.0%	0	0.0%
<b>F Theft And Handling</b>	126	94.7%	7	5.3%
<b>G Fraud And Forgery</b>	10	76.9%	3	23.1%
<b>H Criminal Damage</b>	64	88.9%	8	11.1%
<b>I Drugs Offences</b>	47	97.9%	1	2.1%
<b>J Public Order Offences</b>	128	90.8%	13	9.2%
<b>K All Other Offences (excluding Motoring)</b>	28	84.8%	5	15.2%
<b>L Motoring Offences</b>	334	89.1%	41	10.9%
<b>Admin Finalisations</b>	0	0.0%	9	100.0%
<b>TOTAL</b>	896	87.8%	124	12.2%