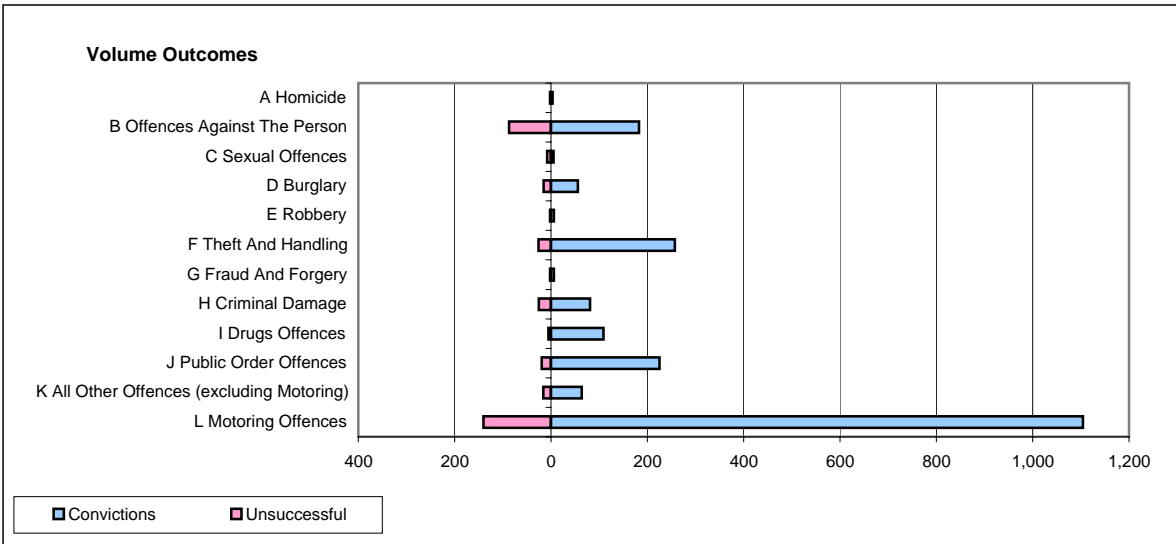
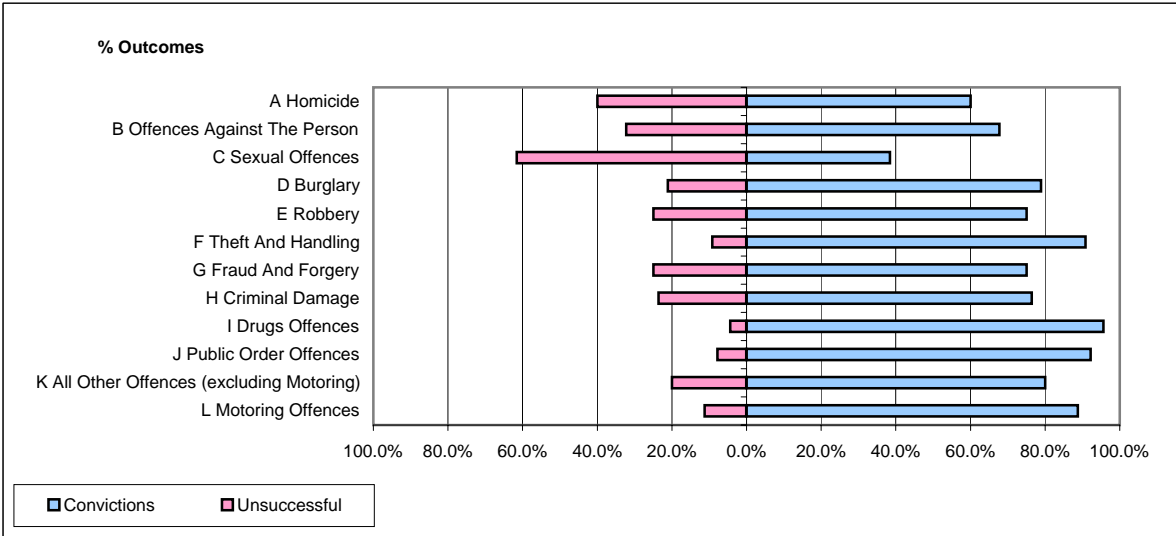


**CPS OUTCOMES BY PRINCIPAL OFFENCE CATEGORY**

January 2007

**P32-SouthWales**



	Convictions		Unsuccessful	
	Number of Defendants	%	Number of Defendants	%
<b>A Homicide</b>	<b>3</b>	<b>60.0%</b>	<b>2</b>	<b>40.0%</b>
<b>B Offences Against The Person</b>	<b>183</b>	<b>67.8%</b>	<b>87</b>	<b>32.2%</b>
<b>C Sexual Offences</b>	<b>5</b>	<b>38.5%</b>	<b>8</b>	<b>61.5%</b>
<b>D Burglary</b>	<b>56</b>	<b>78.9%</b>	<b>15</b>	<b>21.1%</b>
<b>E Robbery</b>	<b>6</b>	<b>75.0%</b>	<b>2</b>	<b>25.0%</b>
<b>F Theft And Handling</b>	<b>257</b>	<b>90.8%</b>	<b>26</b>	<b>9.2%</b>
<b>G Fraud And Forgery</b>	<b>6</b>	<b>75.0%</b>	<b>2</b>	<b>25.0%</b>
<b>H Criminal Damage</b>	<b>81</b>	<b>76.4%</b>	<b>25</b>	<b>23.6%</b>
<b>I Drugs Offences</b>	<b>109</b>	<b>95.6%</b>	<b>5</b>	<b>4.4%</b>
<b>J Public Order Offences</b>	<b>225</b>	<b>92.2%</b>	<b>19</b>	<b>7.8%</b>
<b>K All Other Offences (excluding Motoring)</b>	<b>64</b>	<b>80.0%</b>	<b>16</b>	<b>20.0%</b>
<b>L Motoring Offences</b>	<b>1,104</b>	<b>88.7%</b>	<b>140</b>	<b>11.3%</b>
<b>Admin Finalisations</b>	<b>0</b>	<b>0.0%</b>	<b>101</b>	<b>100.0%</b>
<b>TOTAL</b>	<b>2,099</b>	<b>82.4%</b>	<b>448</b>	<b>17.6%</b>