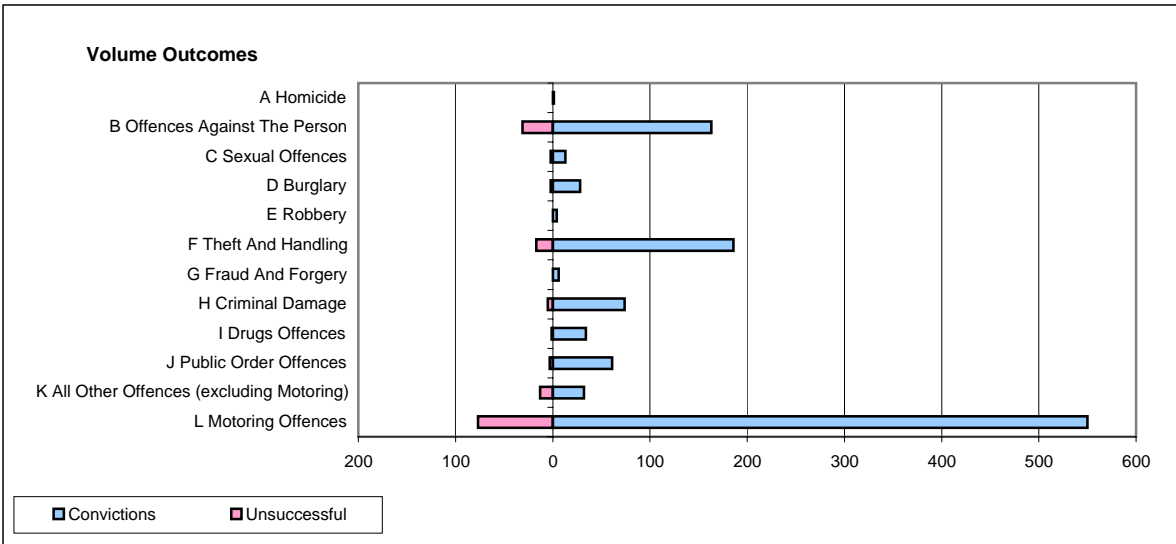
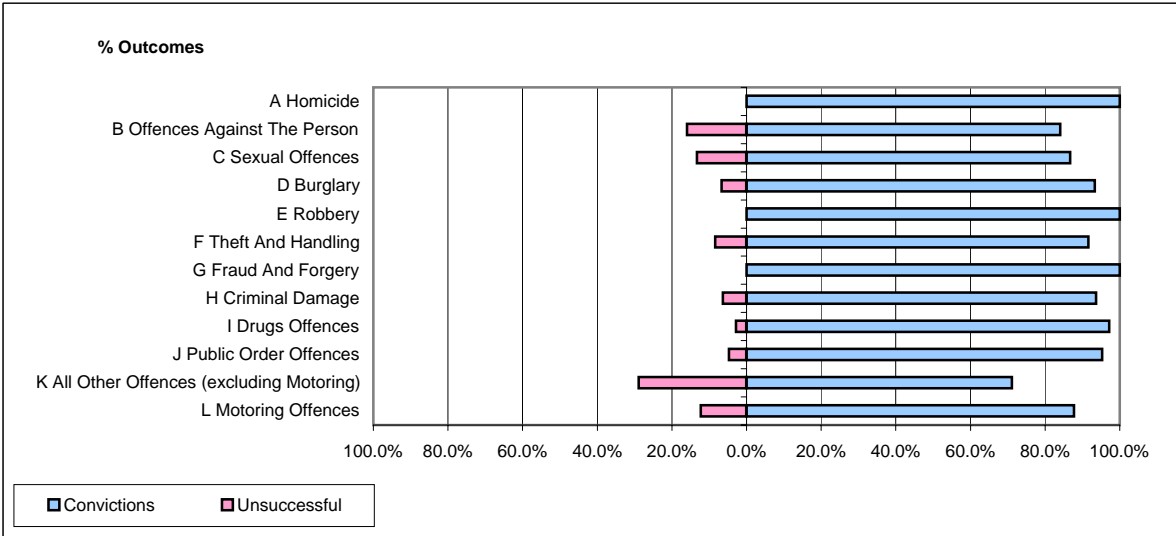


CPS OUTCOMES BY PRINCIPAL OFFENCE CATEGORY

January 2007

P26-Norfolk



	Convictions		Unsuccessful	
	Number of Defendants	%	Number of Defendants	%
A Homicide	1	100.0%	0	0.0%
B Offences Against The Person	163	84.0%	31	16.0%
C Sexual Offences	13	86.7%	2	13.3%
D Burglary	28	93.3%	2	6.7%
E Robbery	4	100.0%	0	0.0%
F Theft And Handling	186	91.6%	17	8.4%
G Fraud And Forgery	6	100.0%	0	0.0%
H Criminal Damage	74	93.7%	5	6.3%
I Drugs Offences	34	97.1%	1	2.9%
J Public Order Offences	61	95.3%	3	4.7%
K All Other Offences (excluding Motoring)	32	71.1%	13	28.9%
L Motoring Offences	550	87.7%	77	12.3%
Admin Finalisations	0	0.0%	46	100.0%
TOTAL	1,152	85.4%	197	14.6%