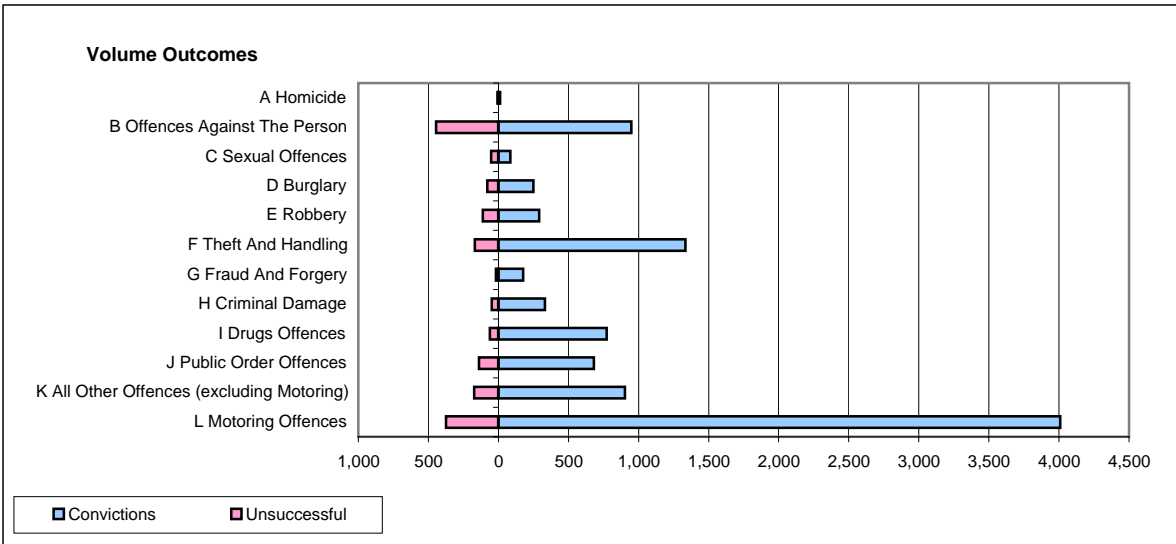
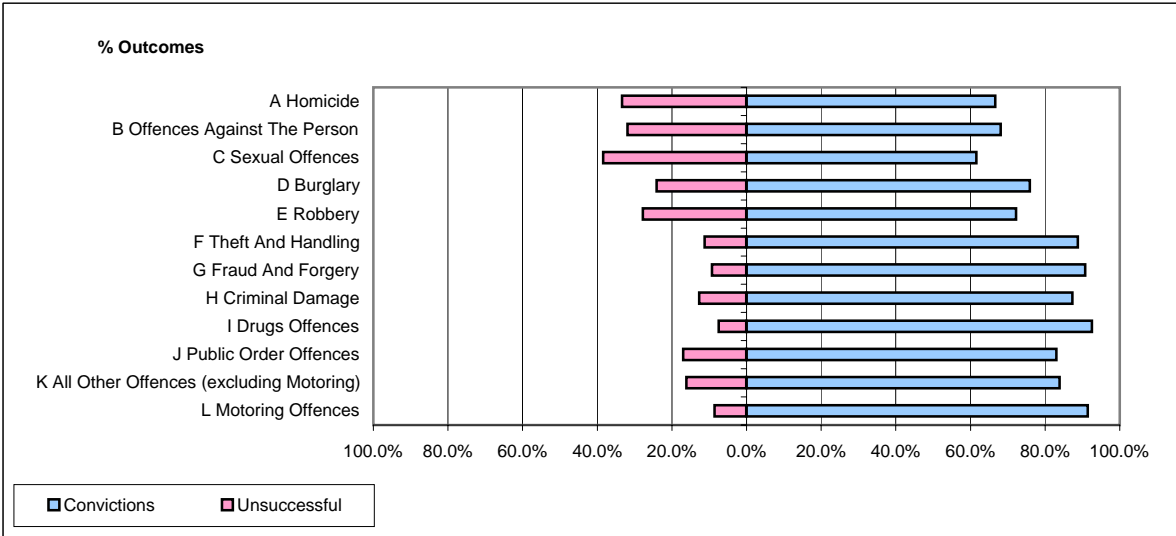


**CPS OUTCOMES BY PRINCIPAL OFFENCE CATEGORY**

January 2007

**P25-Metropolitan&City**



	Convictions		Unsuccessful	
	Number of Defendants	%	Number of Defendants	%
<b>A Homicide</b>	12	66.7%	6	33.3%
<b>B Offences Against The Person</b>	949	68.1%	444	31.9%
<b>C Sexual Offences</b>	85	61.6%	53	38.4%
<b>D Burglary</b>	249	75.9%	79	24.1%
<b>E Robbery</b>	291	72.2%	112	27.8%
<b>F Theft And Handling</b>	1,334	88.8%	169	11.2%
<b>G Fraud And Forgery</b>	176	90.7%	18	9.3%
<b>H Criminal Damage</b>	331	87.3%	48	12.7%
<b>I Drugs Offences</b>	772	92.6%	62	7.4%
<b>J Public Order Offences</b>	681	83.0%	139	17.0%
<b>K All Other Offences (excluding Motoring)</b>	903	83.8%	174	16.2%
<b>L Motoring Offences</b>	4,008	91.5%	374	8.5%
<b>Admin Finalisations</b>	0	0.0%	507	100.0%
<b>TOTAL</b>	9,791	81.8%	2,185	18.2%