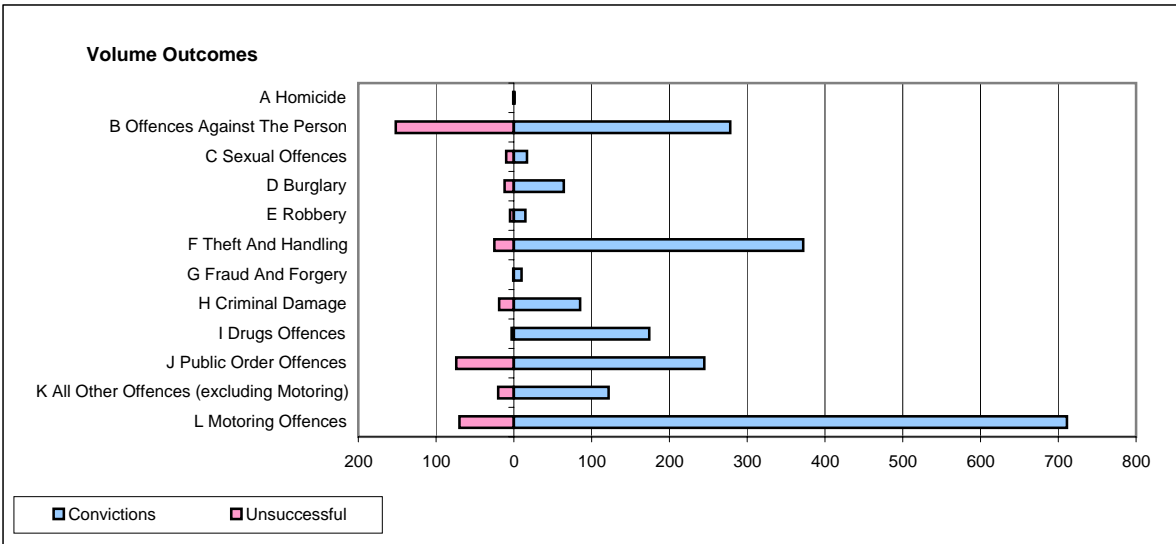
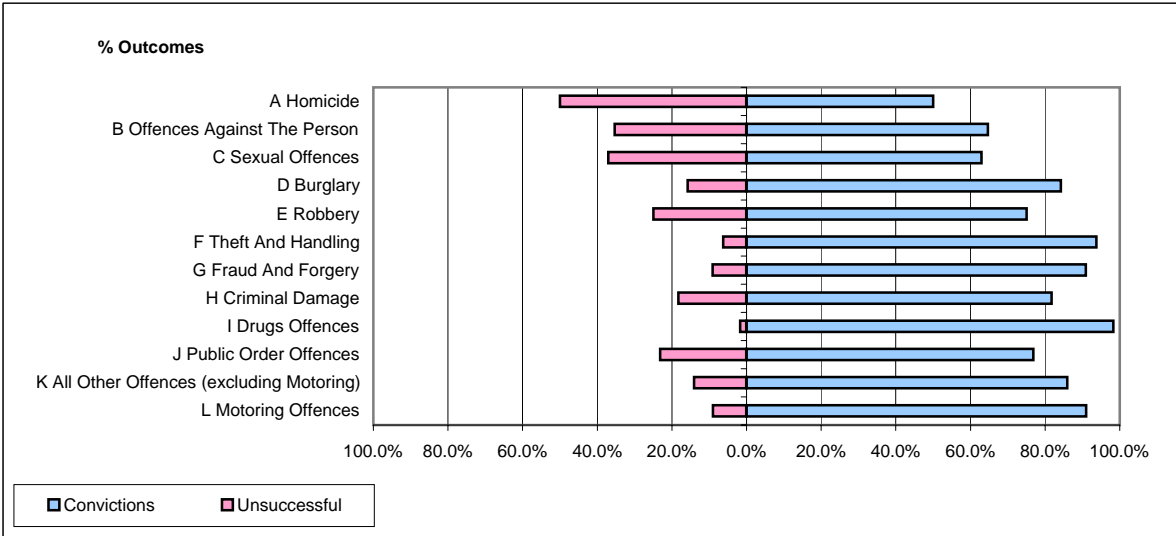


**CPS OUTCOMES BY PRINCIPAL OFFENCE CATEGORY**

January 2007

**P24-Merseyside**



	Convictions		Unsuccessful	
	Number of Defendants	%	Number of Defendants	%
<b>A Homicide</b>	<b>1</b>	<b>50.0%</b>	<b>1</b>	<b>50.0%</b>
<b>B Offences Against The Person</b>	<b>278</b>	<b>64.7%</b>	<b>152</b>	<b>35.3%</b>
<b>C Sexual Offences</b>	<b>17</b>	<b>63.0%</b>	<b>10</b>	<b>37.0%</b>
<b>D Burglary</b>	<b>64</b>	<b>84.2%</b>	<b>12</b>	<b>15.8%</b>
<b>E Robbery</b>	<b>15</b>	<b>75.0%</b>	<b>5</b>	<b>25.0%</b>
<b>F Theft And Handling</b>	<b>372</b>	<b>93.7%</b>	<b>25</b>	<b>6.3%</b>
<b>G Fraud And Forgery</b>	<b>10</b>	<b>90.9%</b>	<b>1</b>	<b>9.1%</b>
<b>H Criminal Damage</b>	<b>85</b>	<b>81.7%</b>	<b>19</b>	<b>18.3%</b>
<b>I Drugs Offences</b>	<b>174</b>	<b>98.3%</b>	<b>3</b>	<b>1.7%</b>
<b>J Public Order Offences</b>	<b>245</b>	<b>76.8%</b>	<b>74</b>	<b>23.2%</b>
<b>K All Other Offences (excluding Motoring)</b>	<b>122</b>	<b>85.9%</b>	<b>20</b>	<b>14.1%</b>
<b>L Motoring Offences</b>	<b>711</b>	<b>91.0%</b>	<b>70</b>	<b>9.0%</b>
<b>Admin Finalisations</b>	<b>0</b>	<b>0.0%</b>	<b>43</b>	<b>100.0%</b>
<b>TOTAL</b>	<b>2,094</b>	<b>82.8%</b>	<b>435</b>	<b>17.2%</b>