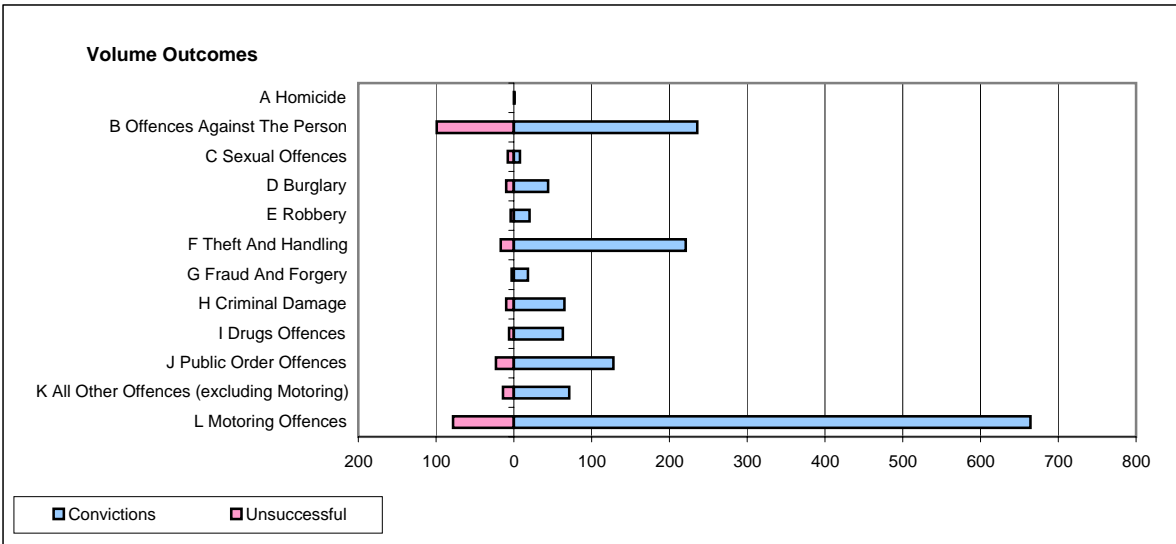
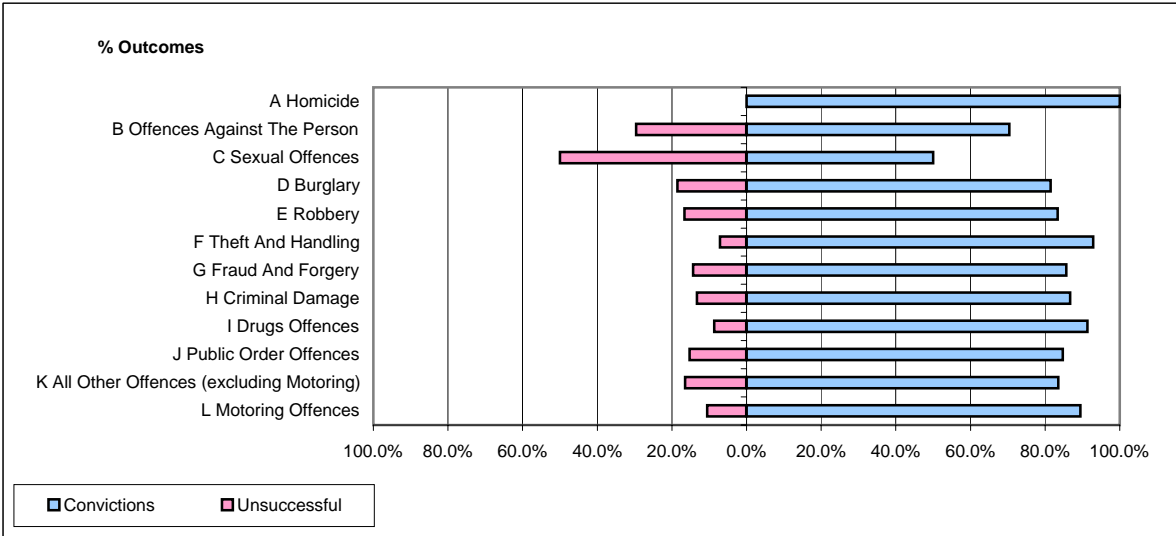


CPS OUTCOMES BY PRINCIPAL OFFENCE CATEGORY

January 2007

P22-Leicestershire



	Convictions		Unsuccessful	
	Number of Defendants	%	Number of Defendants	%
A Homicide	1	100.0%	0	0.0%
B Offences Against The Person	236	70.4%	99	29.6%
C Sexual Offences	8	50.0%	8	50.0%
D Burglary	44	81.5%	10	18.5%
E Robbery	20	83.3%	4	16.7%
F Theft And Handling	221	92.9%	17	7.1%
G Fraud And Forgery	18	85.7%	3	14.3%
H Criminal Damage	65	86.7%	10	13.3%
I Drugs Offences	63	91.3%	6	8.7%
J Public Order Offences	128	84.8%	23	15.2%
K All Other Offences (excluding Motoring)	71	83.5%	14	16.5%
L Motoring Offences	664	89.5%	78	10.5%
Admin Finalisations	0	0.0%	48	100.0%
TOTAL	1,539	82.8%	320	17.2%