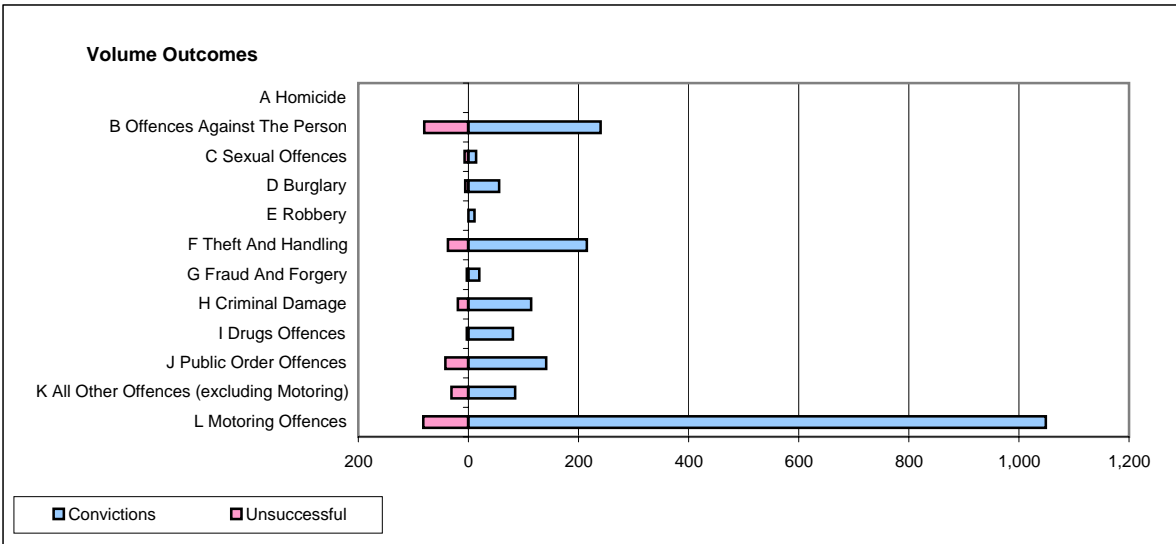
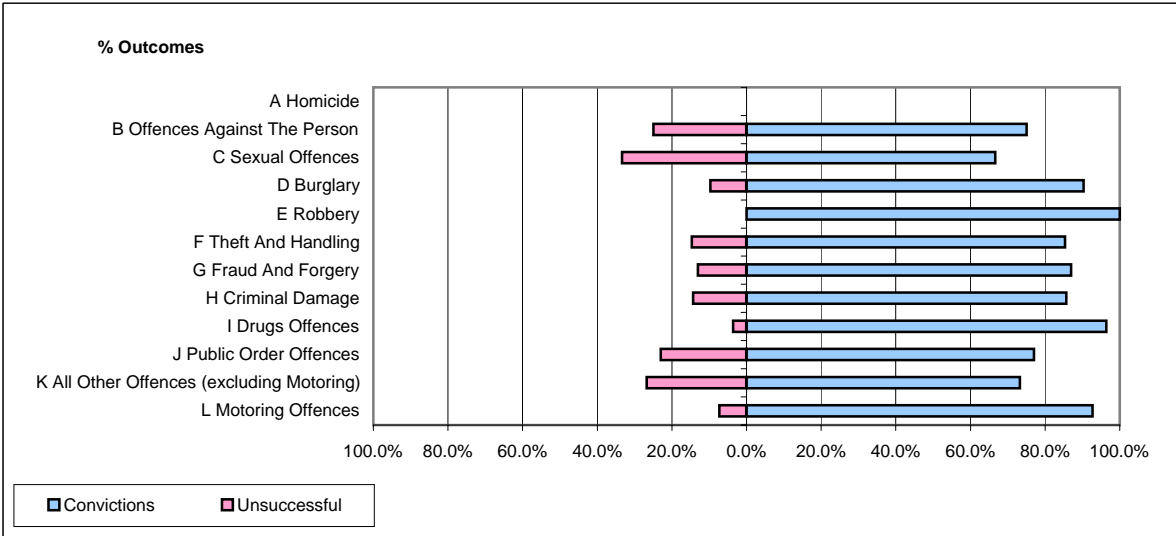


CPS OUTCOMES BY PRINCIPAL OFFENCE CATEGORY

January 2007

P20-Kent



	Convictions		Unsuccessful	
	Number of Defendants	%	Number of Defendants	%
A Homicide	0	#DIV/0!	0	#DIV/0!
B Offences Against The Person	240	75.0%	80	25.0%
C Sexual Offences	14	66.7%	7	33.3%
D Burglary	56	90.3%	6	9.7%
E Robbery	11	100.0%	0	0.0%
F Theft And Handling	215	85.3%	37	14.7%
G Fraud And Forgery	20	87.0%	3	13.0%
H Criminal Damage	114	85.7%	19	14.3%
I Drugs Offences	81	96.4%	3	3.6%
J Public Order Offences	141	77.0%	42	23.0%
K All Other Offences (excluding Motoring)	85	73.3%	31	26.7%
L Motoring Offences	1,049	92.7%	82	7.3%
Admin Finalisations	0	0.0%	31	100.0%
TOTAL	2,026	85.6%	341	14.4%