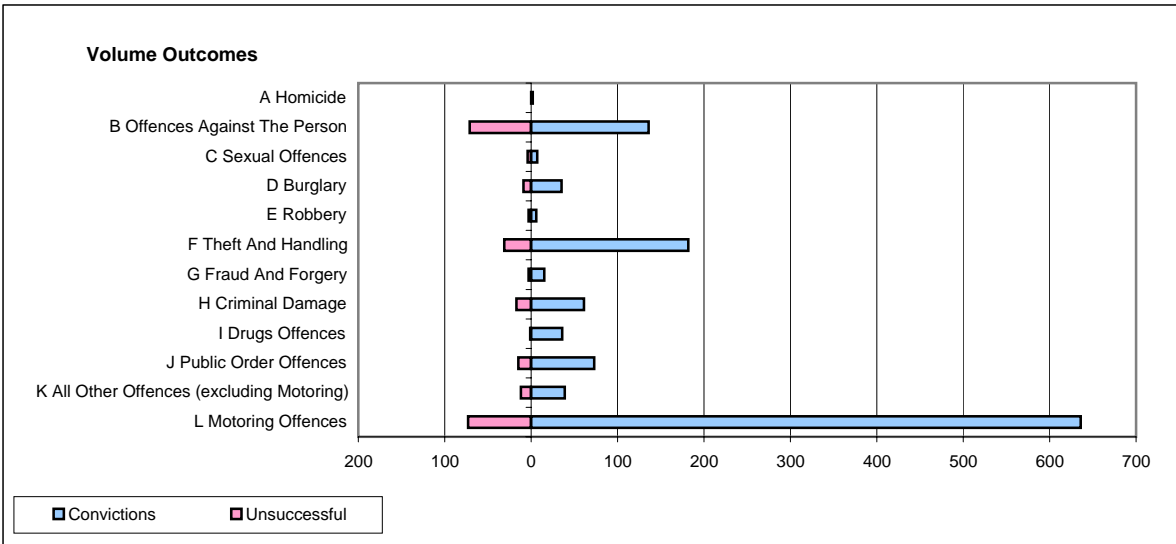
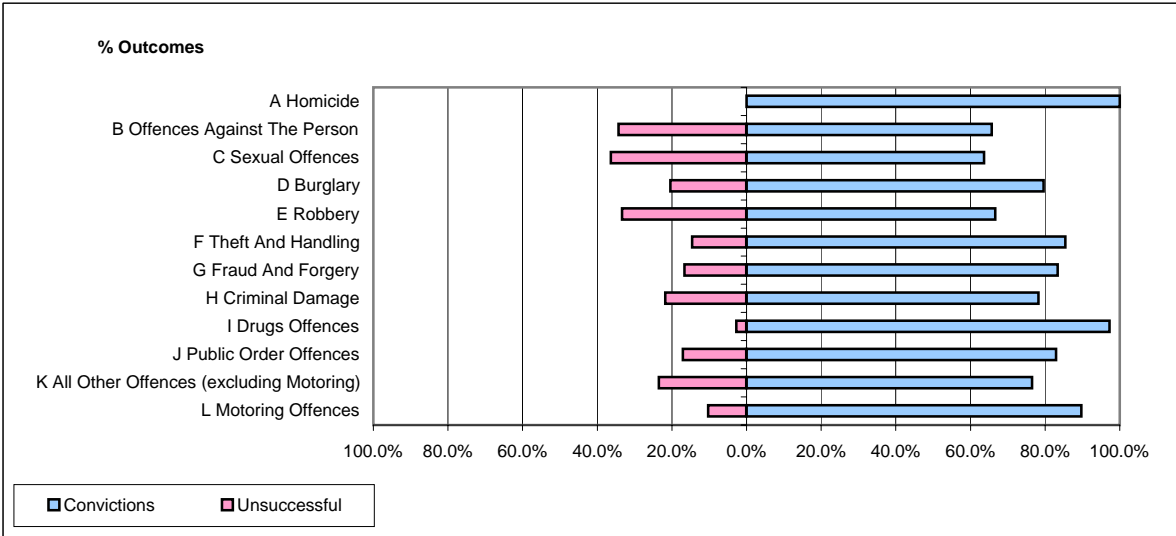


**CPS OUTCOMES BY PRINCIPAL OFFENCE CATEGORY**

January 2007

**P18-Hertfordshire**



	Convictions		Unsuccessful	
	Number of Defendants	%	Number of Defendants	%
<b>A Homicide</b>	<b>2</b>	<b>100.0%</b>	<b>0</b>	<b>0.0%</b>
<b>B Offences Against The Person</b>	<b>136</b>	<b>65.7%</b>	<b>71</b>	<b>34.3%</b>
<b>C Sexual Offences</b>	<b>7</b>	<b>63.6%</b>	<b>4</b>	<b>36.4%</b>
<b>D Burglary</b>	<b>35</b>	<b>79.5%</b>	<b>9</b>	<b>20.5%</b>
<b>E Robbery</b>	<b>6</b>	<b>66.7%</b>	<b>3</b>	<b>33.3%</b>
<b>F Theft And Handling</b>	<b>182</b>	<b>85.4%</b>	<b>31</b>	<b>14.6%</b>
<b>G Fraud And Forgery</b>	<b>15</b>	<b>83.3%</b>	<b>3</b>	<b>16.7%</b>
<b>H Criminal Damage</b>	<b>61</b>	<b>78.2%</b>	<b>17</b>	<b>21.8%</b>
<b>I Drugs Offences</b>	<b>36</b>	<b>97.3%</b>	<b>1</b>	<b>2.7%</b>
<b>J Public Order Offences</b>	<b>73</b>	<b>83.0%</b>	<b>15</b>	<b>17.0%</b>
<b>K All Other Offences (excluding Motoring)</b>	<b>39</b>	<b>76.5%</b>	<b>12</b>	<b>23.5%</b>
<b>L Motoring Offences</b>	<b>636</b>	<b>89.7%</b>	<b>73</b>	<b>10.3%</b>
<b>Admin Finalisations</b>	<b>0</b>	<b>0.0%</b>	<b>46</b>	<b>100.0%</b>
<b>TOTAL</b>	<b>1,228</b>	<b>81.2%</b>	<b>285</b>	<b>18.8%</b>