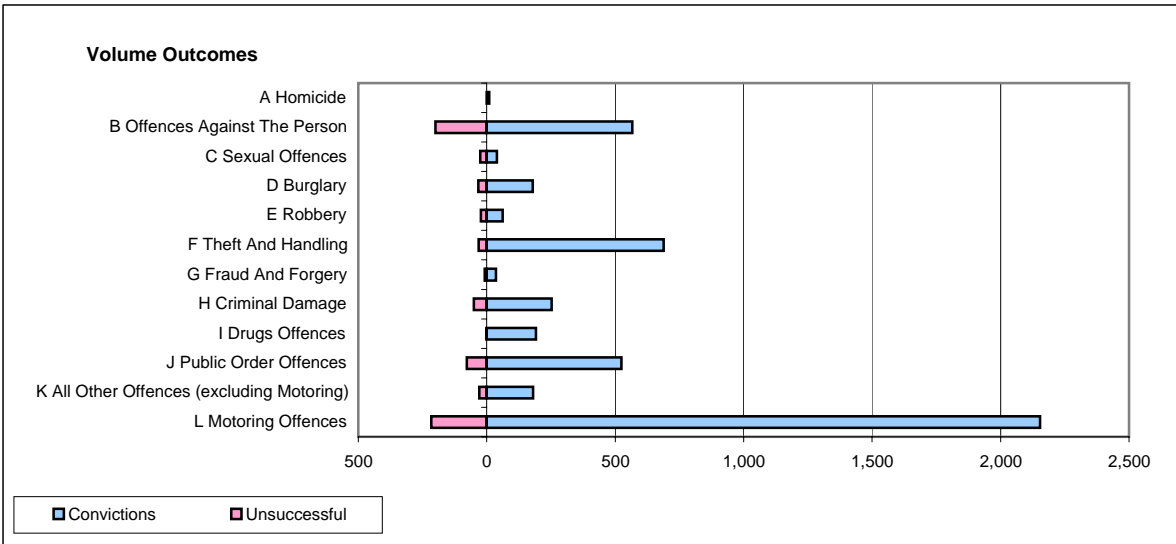
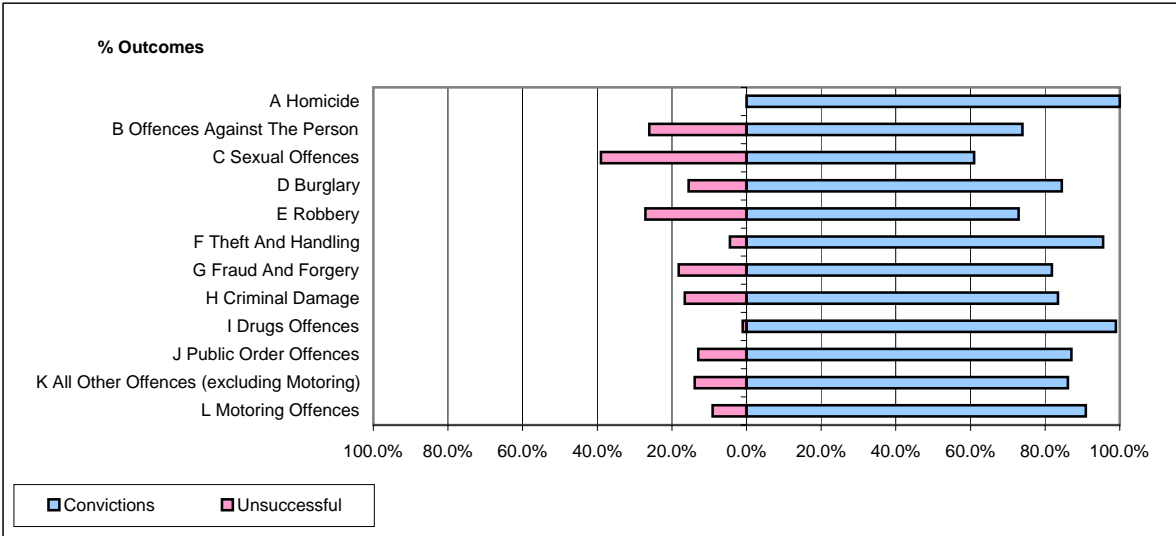


CPS OUTCOMES BY PRINCIPAL OFFENCE CATEGORY

January 2007

P15-GreaterManchester



	Convictions		Unsuccessful	
	Number of Defendants	%	Number of Defendants	%
A Homicide	9	100.0%	0	0.0%
B Offences Against The Person	567	73.9%	200	26.1%
C Sexual Offences	39	60.9%	25	39.1%
D Burglary	179	84.4%	33	15.6%
E Robbery	62	72.9%	23	27.1%
F Theft And Handling	688	95.6%	32	4.4%
G Fraud And Forgery	36	81.8%	8	18.2%
H Criminal Damage	252	83.4%	50	16.6%
I Drugs Offences	191	99.0%	2	1.0%
J Public Order Offences	524	87.0%	78	13.0%
K All Other Offences (excluding Motoring)	180	86.1%	29	13.9%
L Motoring Offences	2,154	90.9%	216	9.1%
Admin Finalisations	0	0.0%	137	100.0%
TOTAL	4,881	85.4%	833	14.6%