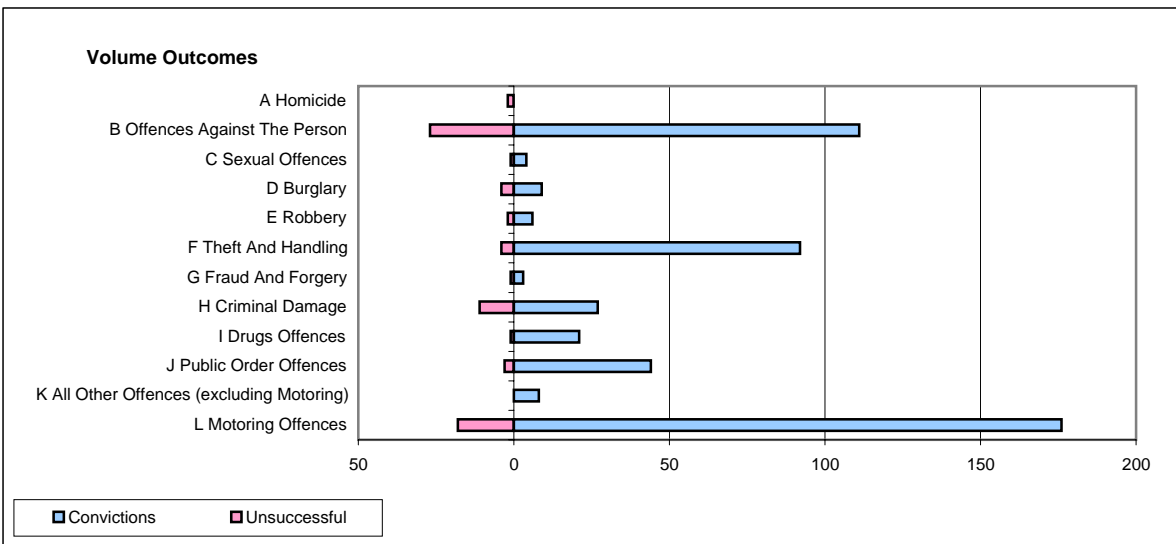
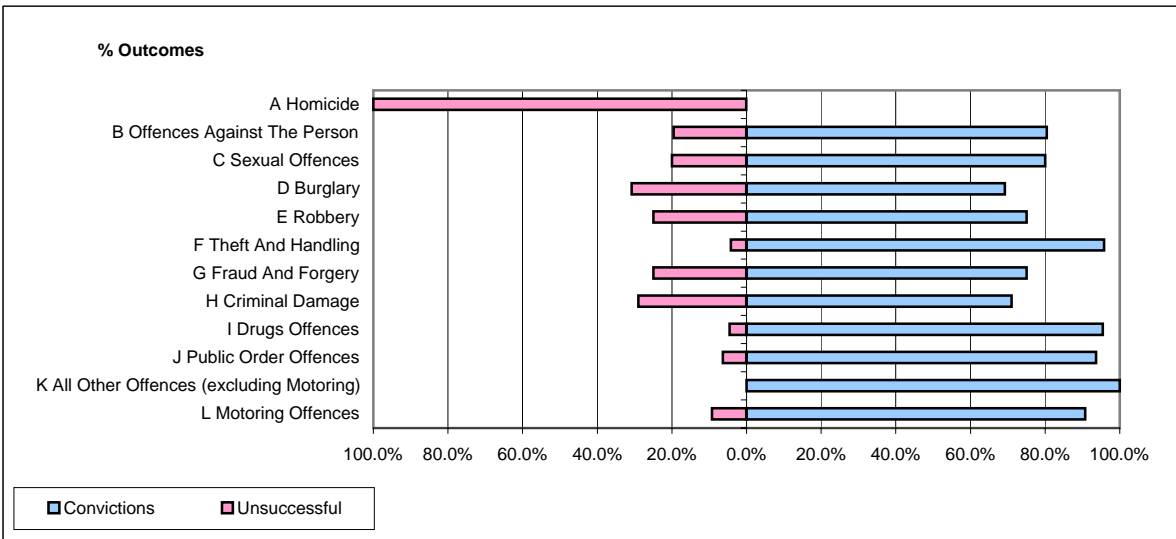


**CPS OUTCOMES BY PRINCIPAL OFFENCE CATEGORY**

January 2007

**P14-Gloucestershire**



	Convictions		Unsuccessful	
	Number of Defendants	%	Number of Defendants	%
<b>A Homicide</b>	<b>0</b>	<b>0.0%</b>	<b>2</b>	<b>100.0%</b>
<b>B Offences Against The Person</b>	<b>111</b>	<b>80.4%</b>	<b>27</b>	<b>19.6%</b>
<b>C Sexual Offences</b>	<b>4</b>	<b>80.0%</b>	<b>1</b>	<b>20.0%</b>
<b>D Burglary</b>	<b>9</b>	<b>69.2%</b>	<b>4</b>	<b>30.8%</b>
<b>E Robbery</b>	<b>6</b>	<b>75.0%</b>	<b>2</b>	<b>25.0%</b>
<b>F Theft And Handling</b>	<b>92</b>	<b>95.8%</b>	<b>4</b>	<b>4.2%</b>
<b>G Fraud And Forgery</b>	<b>3</b>	<b>75.0%</b>	<b>1</b>	<b>25.0%</b>
<b>H Criminal Damage</b>	<b>27</b>	<b>71.1%</b>	<b>11</b>	<b>28.9%</b>
<b>I Drugs Offences</b>	<b>21</b>	<b>95.5%</b>	<b>1</b>	<b>4.5%</b>
<b>J Public Order Offences</b>	<b>44</b>	<b>93.6%</b>	<b>3</b>	<b>6.4%</b>
<b>K All Other Offences (excluding Motoring)</b>	<b>8</b>	<b>100.0%</b>	<b>0</b>	<b>0.0%</b>
<b>L Motoring Offences</b>	<b>176</b>	<b>90.7%</b>	<b>18</b>	<b>9.3%</b>
<b>Admin Finalisations</b>	<b>0</b>	<b>0.0%</b>	<b>13</b>	<b>100.0%</b>
<b>TOTAL</b>	<b>501</b>	<b>85.2%</b>	<b>87</b>	<b>14.8%</b>