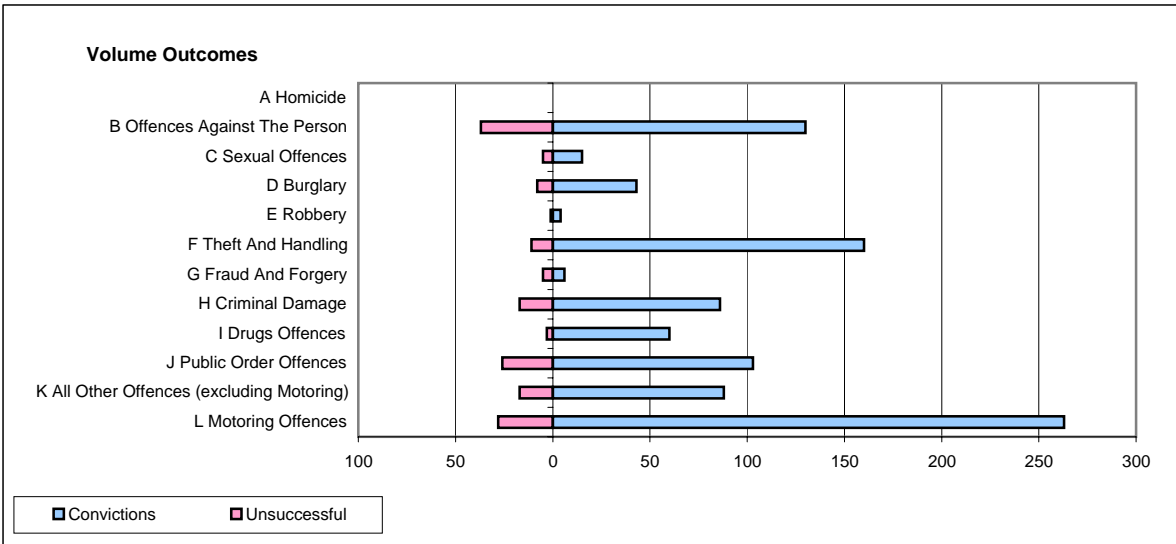
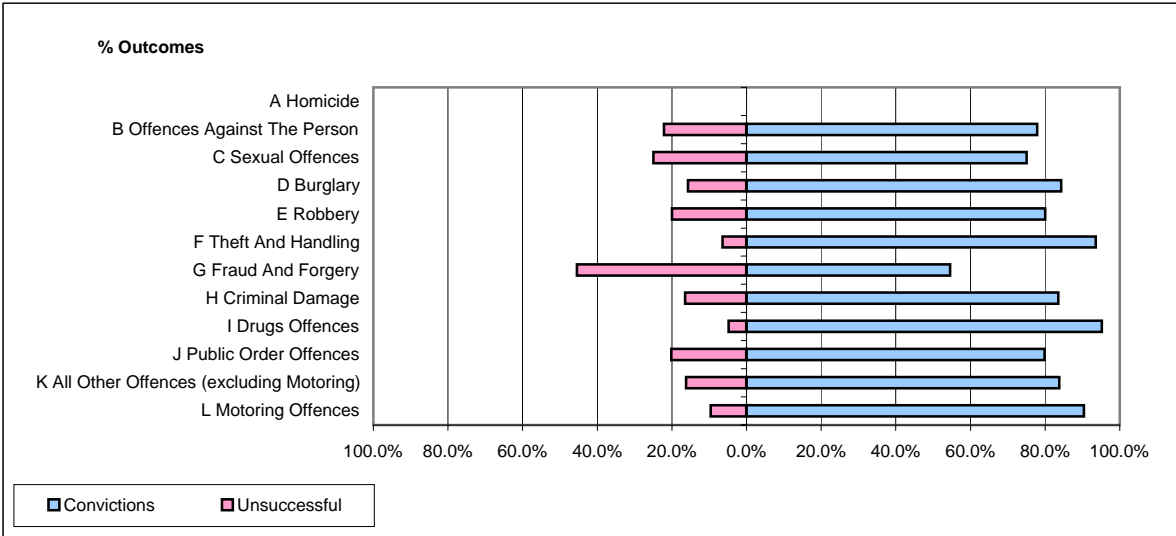


CPS OUTCOMES BY PRINCIPAL OFFENCE CATEGORY

January 2007

P11-Durham



	Convictions		Unsuccessful	
	Number of Defendants	%	Number of Defendants	%
A Homicide	0	#DIV/0!	0	#DIV/0!
B Offences Against The Person	130	77.8%	37	22.2%
C Sexual Offences	15	75.0%	5	25.0%
D Burglary	43	84.3%	8	15.7%
E Robbery	4	80.0%	1	20.0%
F Theft And Handling	160	93.6%	11	6.4%
G Fraud And Forgery	6	54.5%	5	45.5%
H Criminal Damage	86	83.5%	17	16.5%
I Drugs Offences	60	95.2%	3	4.8%
J Public Order Offences	103	79.8%	26	20.2%
K All Other Offences (excluding Motoring)	88	83.8%	17	16.2%
L Motoring Offences	263	90.4%	28	9.6%
Admin Finalisations	0	0.0%	14	100.0%
TOTAL	958	84.8%	172	15.2%