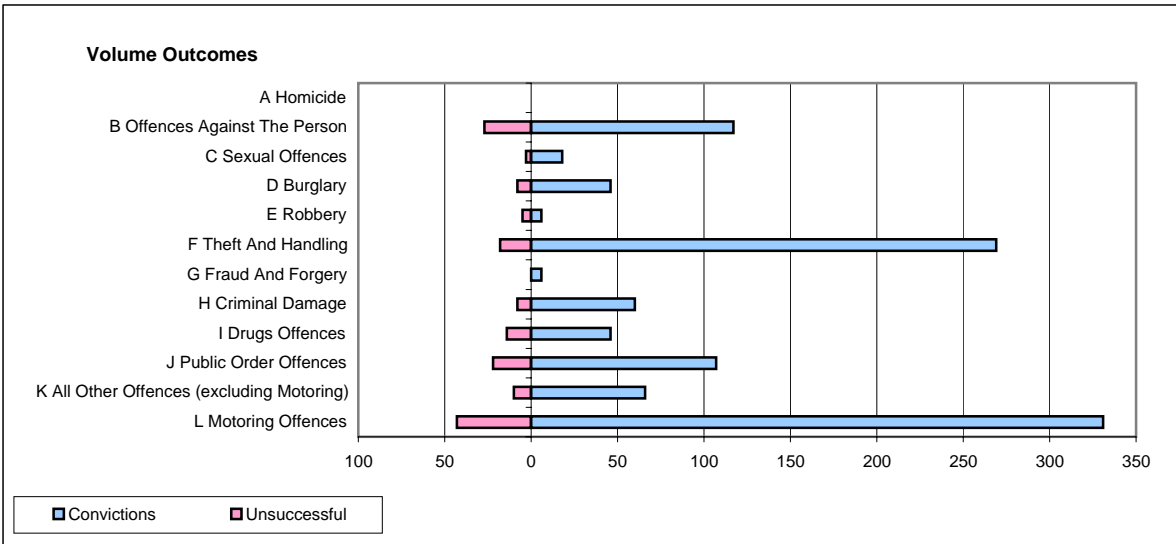
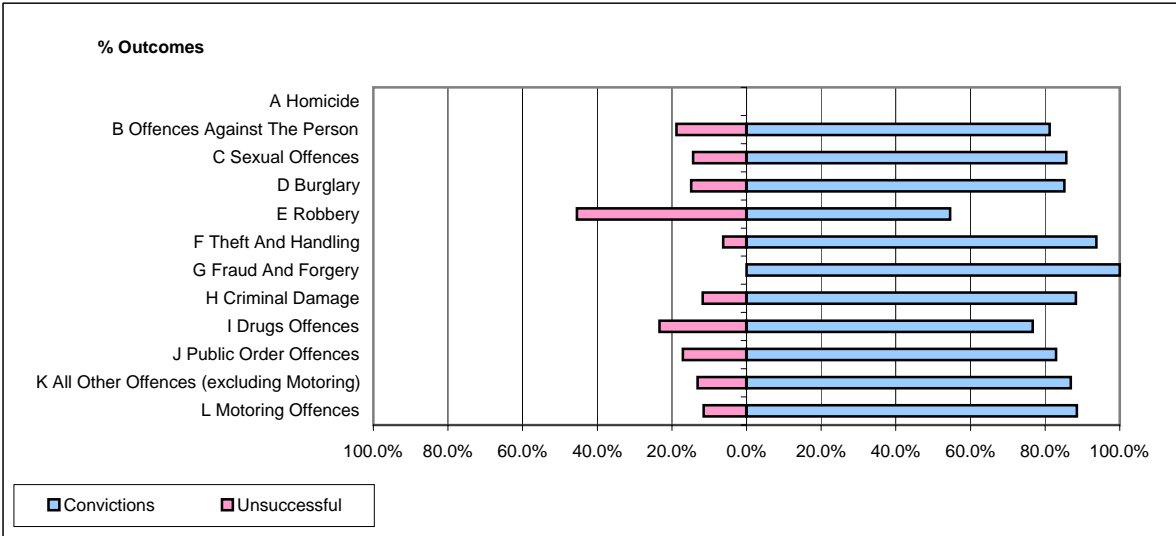


CPS OUTCOMES BY PRINCIPAL OFFENCE CATEGORY

January 2007

P06-Cleveland



	Convictions		Unsuccessful	
	Number of Defendants	%	Number of Defendants	%
A Homicide	0	#DIV/0!	0	#DIV/0!
B Offences Against The Person	117	81.3%	27	18.8%
C Sexual Offences	18	85.7%	3	14.3%
D Burglary	46	85.2%	8	14.8%
E Robbery	6	54.5%	5	45.5%
F Theft And Handling	269	93.7%	18	6.3%
G Fraud And Forgery	6	100.0%	0	0.0%
H Criminal Damage	60	88.2%	8	11.8%
I Drugs Offences	46	76.7%	14	23.3%
J Public Order Offences	107	82.9%	22	17.1%
K All Other Offences (excluding Motoring)	66	86.8%	10	13.2%
L Motoring Offences	331	88.5%	43	11.5%
Admin Finalisations	0	0.0%	16	100.0%
TOTAL	1,072	86.0%	174	14.0%