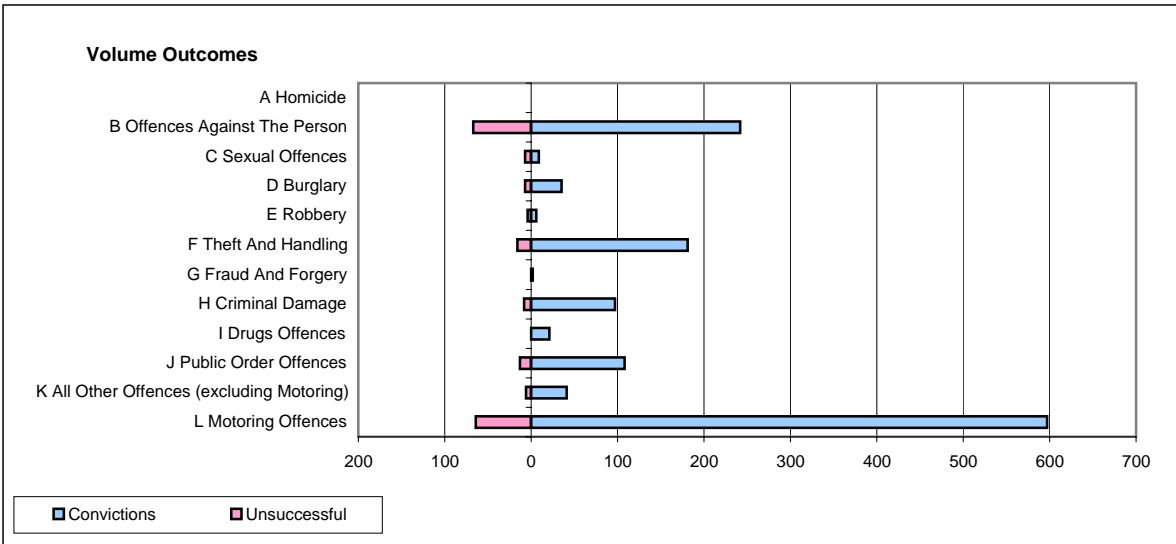
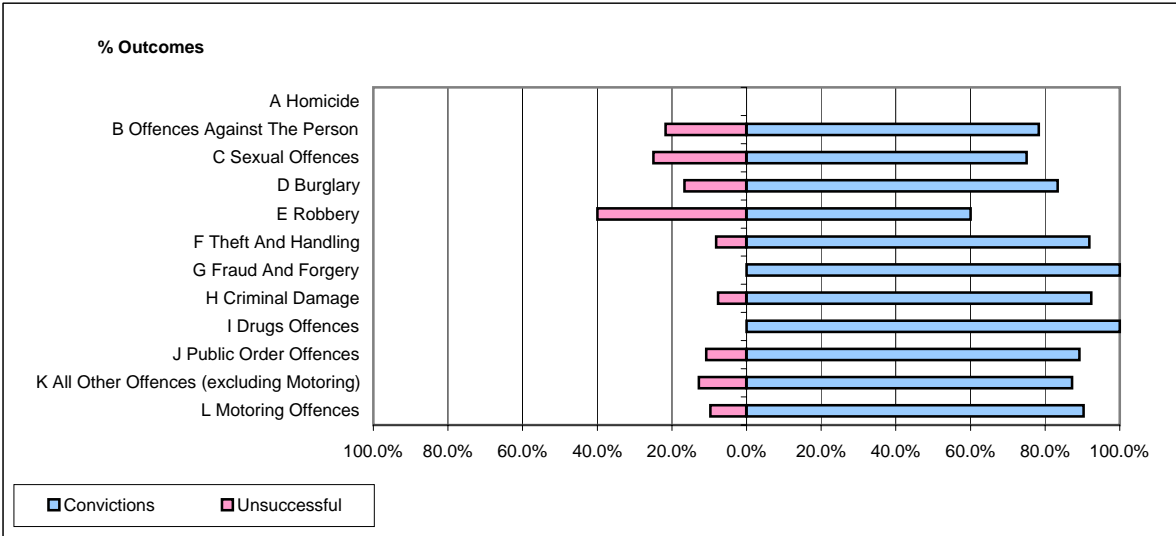


CPS OUTCOMES BY PRINCIPAL OFFENCE CATEGORY

January 2007

P04-Cheshire



	Convictions		Unsuccessful	
	Number of Defendants	%	Number of Defendants	%
A Homicide	0	#DIV/0!	0	#DIV/0!
B Offences Against The Person	242	78.3%	67	21.7%
C Sexual Offences	9	75.0%	7	25.0%
D Burglary	35	83.3%	7	16.7%
E Robbery	6	60.0%	4	40.0%
F Theft And Handling	181	91.9%	16	8.1%
G Fraud And Forgery	2	100.0%	0	0.0%
H Criminal Damage	97	92.4%	8	7.6%
I Drugs Offences	21	100.0%	0	0.0%
J Public Order Offences	108	89.2%	13	10.8%
K All Other Offences (excluding Motoring)	41	87.2%	6	12.8%
L Motoring Offences	597	90.3%	64	9.7%
Admin Finalisations	0	0.0%	14	100.0%
TOTAL	1,339	86.7%	206	13.3%