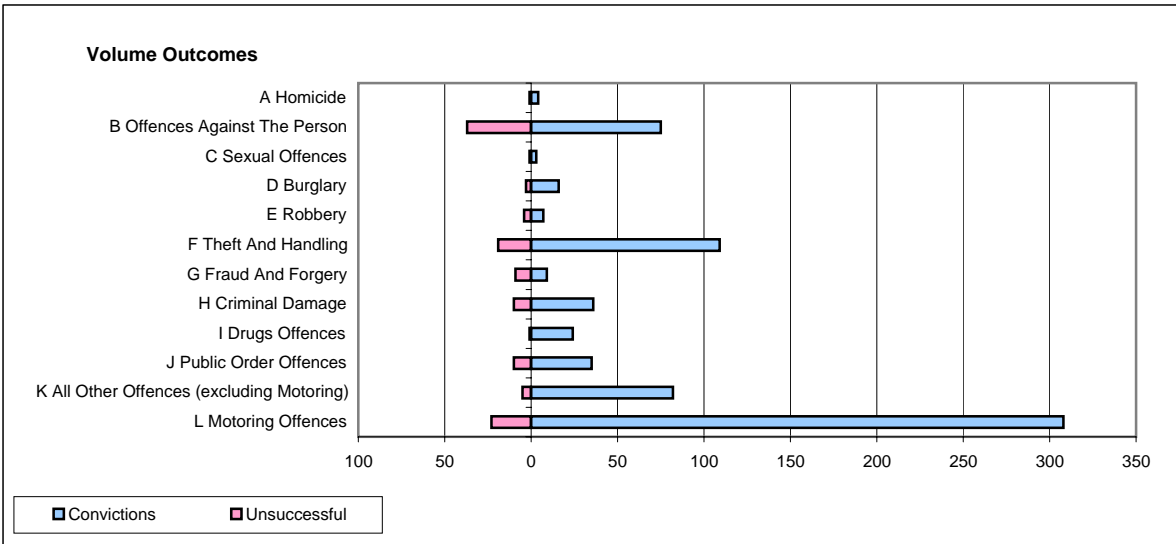
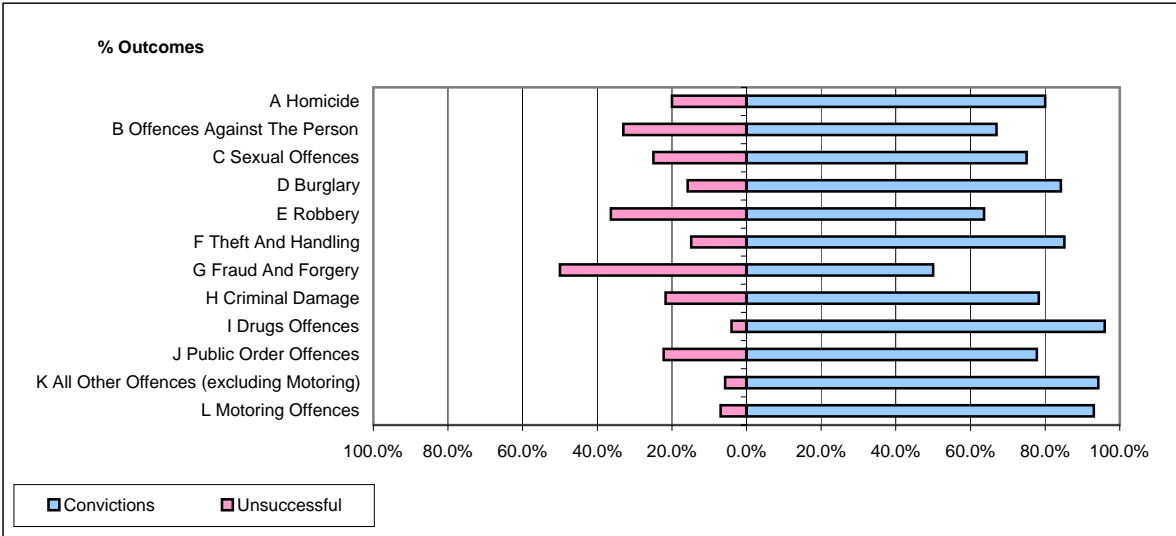


**CPS OUTCOMES BY PRINCIPAL OFFENCE CATEGORY**

January 2007

**P02-Bedfordshire**



	Convictions		Unsuccessful	
	Number of Defendants	%	Number of Defendants	%
<b>A Homicide</b>	<b>4</b>	<b>80.0%</b>	<b>1</b>	<b>20.0%</b>
<b>B Offences Against The Person</b>	<b>75</b>	<b>67.0%</b>	<b>37</b>	<b>33.0%</b>
<b>C Sexual Offences</b>	<b>3</b>	<b>75.0%</b>	<b>1</b>	<b>25.0%</b>
<b>D Burglary</b>	<b>16</b>	<b>84.2%</b>	<b>3</b>	<b>15.8%</b>
<b>E Robbery</b>	<b>7</b>	<b>63.6%</b>	<b>4</b>	<b>36.4%</b>
<b>F Theft And Handling</b>	<b>109</b>	<b>85.2%</b>	<b>19</b>	<b>14.8%</b>
<b>G Fraud And Forgery</b>	<b>9</b>	<b>50.0%</b>	<b>9</b>	<b>50.0%</b>
<b>H Criminal Damage</b>	<b>36</b>	<b>78.3%</b>	<b>10</b>	<b>21.7%</b>
<b>I Drugs Offences</b>	<b>24</b>	<b>96.0%</b>	<b>1</b>	<b>4.0%</b>
<b>J Public Order Offences</b>	<b>35</b>	<b>77.8%</b>	<b>10</b>	<b>22.2%</b>
<b>K All Other Offences (excluding Motoring)</b>	<b>82</b>	<b>94.3%</b>	<b>5</b>	<b>5.7%</b>
<b>L Motoring Offences</b>	<b>308</b>	<b>93.1%</b>	<b>23</b>	<b>6.9%</b>
<b>Admin Finalisations</b>	<b>0</b>	<b>0.0%</b>	<b>14</b>	<b>100.0%</b>
<b>TOTAL</b>	<b>708</b>	<b>83.8%</b>	<b>137</b>	<b>16.2%</b>