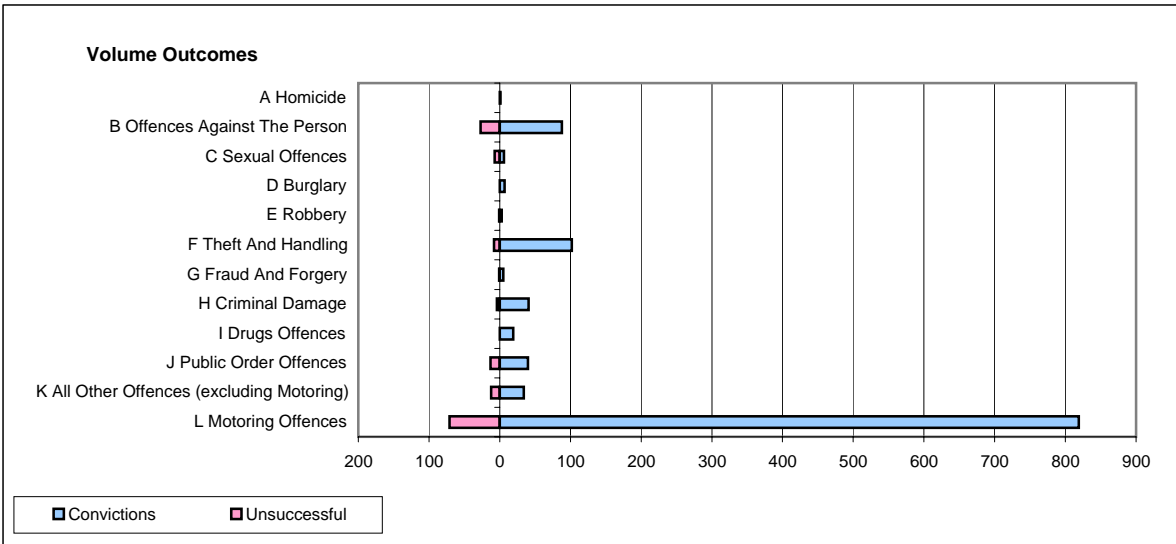
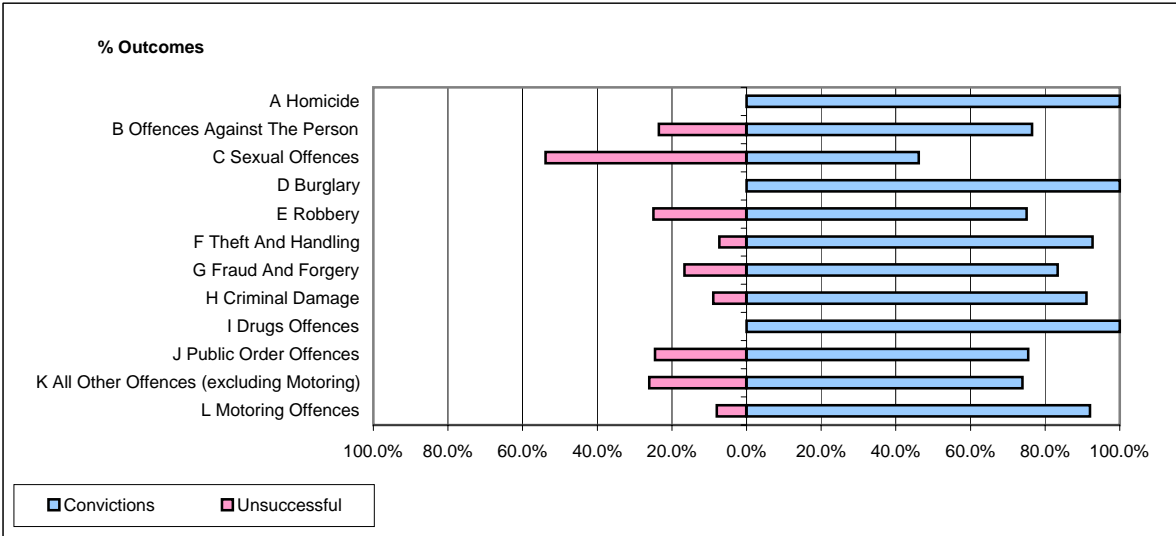


CPS OUTCOMES BY PRINCIPAL OFFENCE CATEGORY

December 2006

P43-Wiltshire



| | Convictions | | Unsuccessful | |
|--|----------------------|---------------|----------------------|---------------|
| | Number of Defendants | % | Number of Defendants | % |
| A Homicide | 1 | 100.0% | 0 | 0.0% |
| B Offences Against The Person | 88 | 76.5% | 27 | 23.5% |
| C Sexual Offences | 6 | 46.2% | 7 | 53.8% |
| D Burglary | 7 | 100.0% | 0 | 0.0% |
| E Robbery | 3 | 75.0% | 1 | 25.0% |
| F Theft And Handling | 102 | 92.7% | 8 | 7.3% |
| G Fraud And Forgery | 5 | 83.3% | 1 | 16.7% |
| H Criminal Damage | 41 | 91.1% | 4 | 8.9% |
| I Drugs Offences | 19 | 100.0% | 0 | 0.0% |
| J Public Order Offences | 40 | 75.5% | 13 | 24.5% |
| K All Other Offences (excluding Motoring) | 34 | 73.9% | 12 | 26.1% |
| L Motoring Offences | 819 | 92.0% | 71 | 8.0% |
| Admin Finalisations | 0 | 0.0% | 17 | 100.0% |
| TOTAL | 1,165 | 87.9% | 161 | 12.1% |