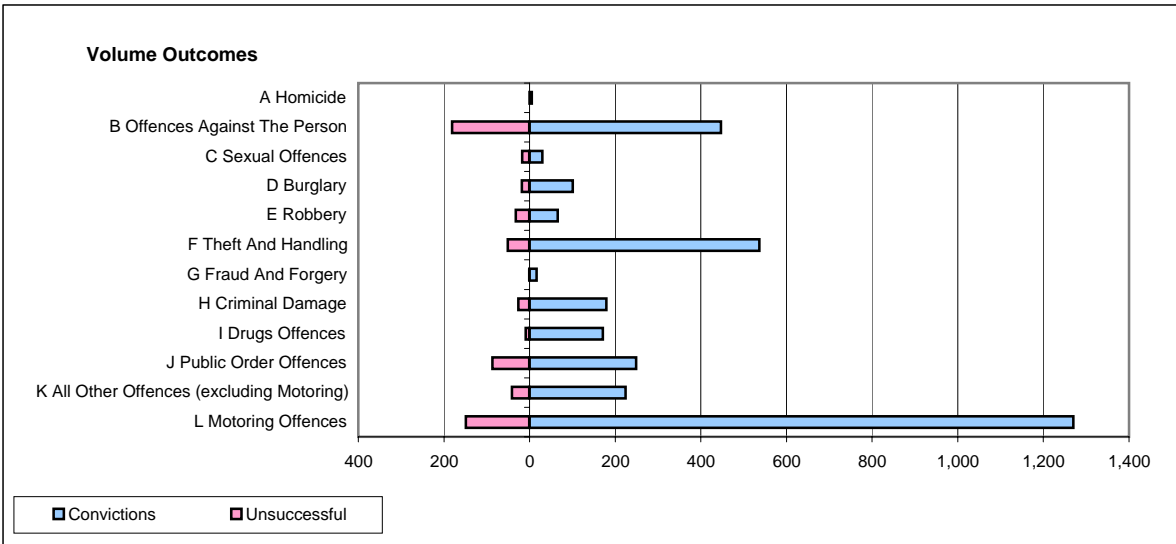
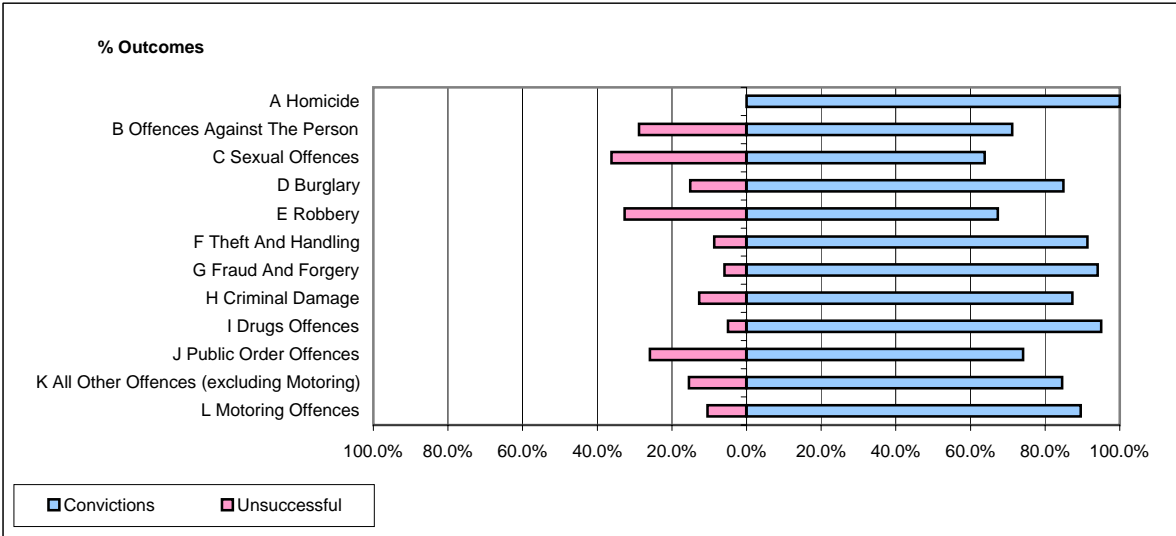


CPS OUTCOMES BY PRINCIPAL OFFENCE CATEGORY

December 2006

P41-WestMidlands



	Convictions		Unsuccessful	
	Number of Defendants	%	Number of Defendants	%
A Homicide	5	100.0%	0	0.0%
B Offences Against The Person	447	71.2%	181	28.8%
C Sexual Offences	30	63.8%	17	36.2%
D Burglary	101	84.9%	18	15.1%
E Robbery	66	67.3%	32	32.7%
F Theft And Handling	537	91.3%	51	8.7%
G Fraud And Forgery	16	94.1%	1	5.9%
H Criminal Damage	179	87.3%	26	12.7%
I Drugs Offences	171	95.0%	9	5.0%
J Public Order Offences	249	74.1%	87	25.9%
K All Other Offences (excluding Motoring)	224	84.5%	41	15.5%
L Motoring Offences	1,270	89.5%	149	10.5%
Admin Finalisations	0	0.0%	81	100.0%
TOTAL	3,295	82.6%	693	17.4%