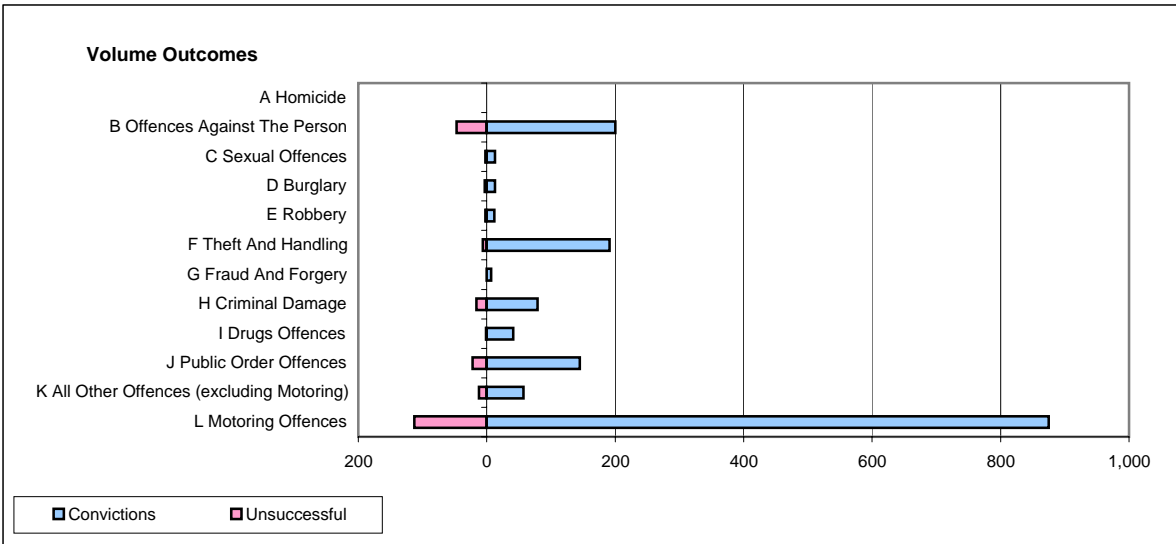
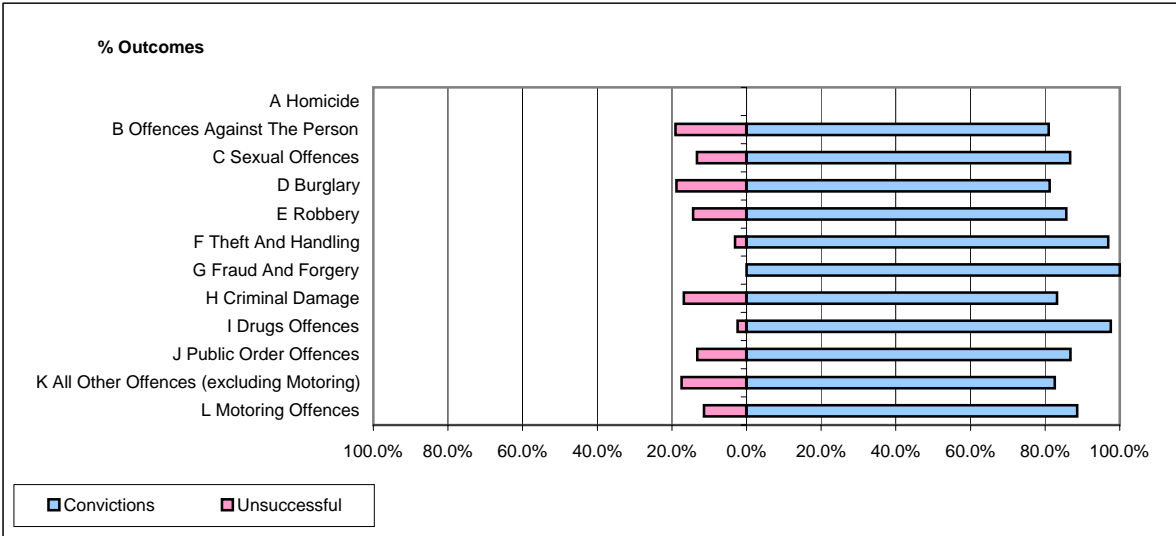


CPS OUTCOMES BY PRINCIPAL OFFENCE CATEGORY

December 2006

P40-WestMercia



	Convictions		Unsuccessful	
	Number of Defendants	%	Number of Defendants	%
A Homicide	0	#DIV/0!	0	#DIV/0!
B Offences Against The Person	200	81.0%	47	19.0%
C Sexual Offences	13	86.7%	2	13.3%
D Burglary	13	81.3%	3	18.8%
E Robbery	12	85.7%	2	14.3%
F Theft And Handling	191	97.0%	6	3.0%
G Fraud And Forgery	7	100.0%	0	0.0%
H Criminal Damage	79	83.2%	16	16.8%
I Drugs Offences	41	97.6%	1	2.4%
J Public Order Offences	145	86.8%	22	13.2%
K All Other Offences (excluding Motoring)	57	82.6%	12	17.4%
L Motoring Offences	875	88.6%	113	11.4%
Admin Finalisations	0	0.0%	45	100.0%
TOTAL	1,633	85.9%	269	14.1%