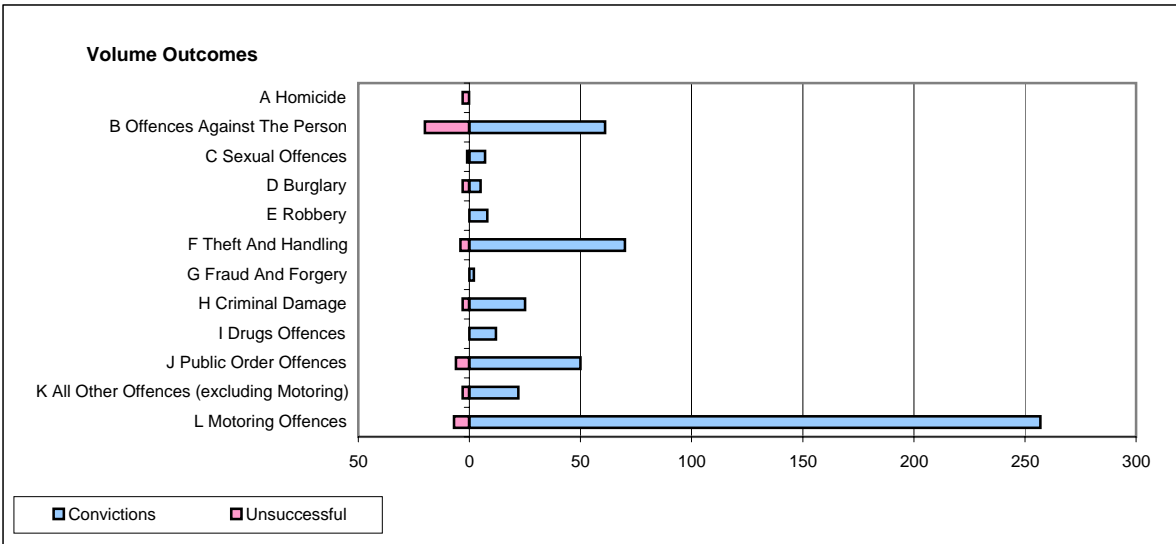
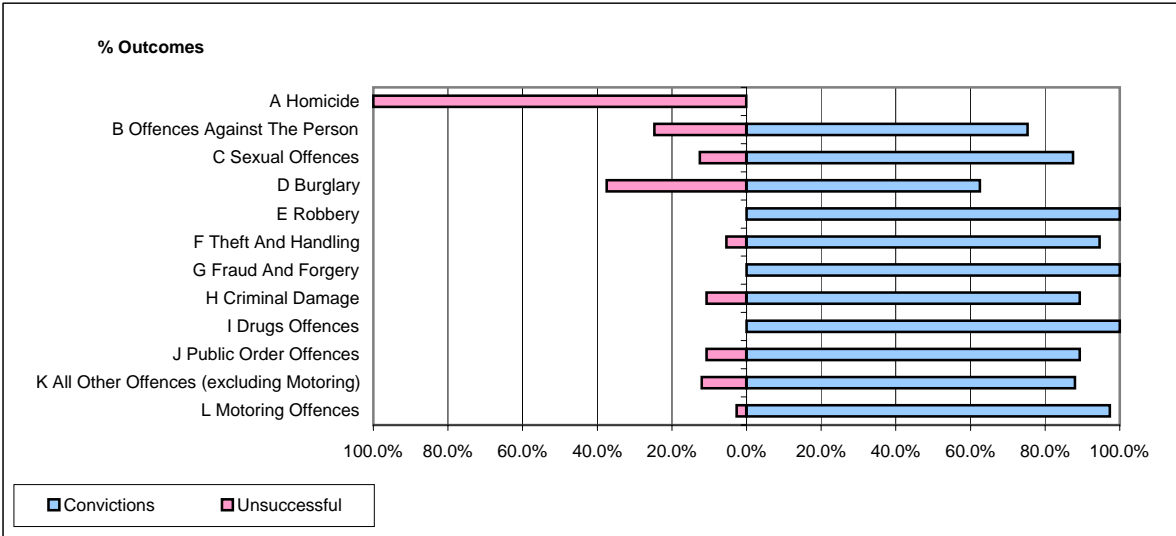


CPS OUTCOMES BY PRINCIPAL OFFENCE CATEGORY

December 2006

P39-Warwickshire



	Convictions		Unsuccessful	
	Number of Defendants	%	Number of Defendants	%
A Homicide	0	0.0%	3	100.0%
B Offences Against The Person	61	75.3%	20	24.7%
C Sexual Offences	7	87.5%	1	12.5%
D Burglary	5	62.5%	3	37.5%
E Robbery	8	100.0%	0	0.0%
F Theft And Handling	70	94.6%	4	5.4%
G Fraud And Forgery	2	100.0%	0	0.0%
H Criminal Damage	25	89.3%	3	10.7%
I Drugs Offences	12	100.0%	0	0.0%
J Public Order Offences	50	89.3%	6	10.7%
K All Other Offences (excluding Motoring)	22	88.0%	3	12.0%
L Motoring Offences	257	97.3%	7	2.7%
Admin Finalisations	0	0.0%	8	100.0%
TOTAL	519	89.9%	58	10.1%