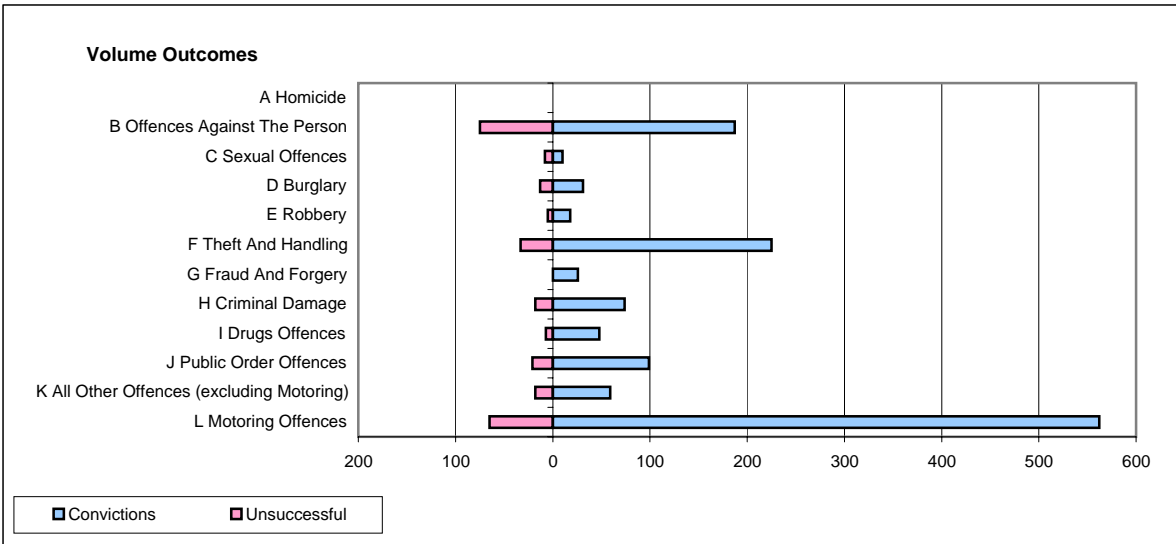
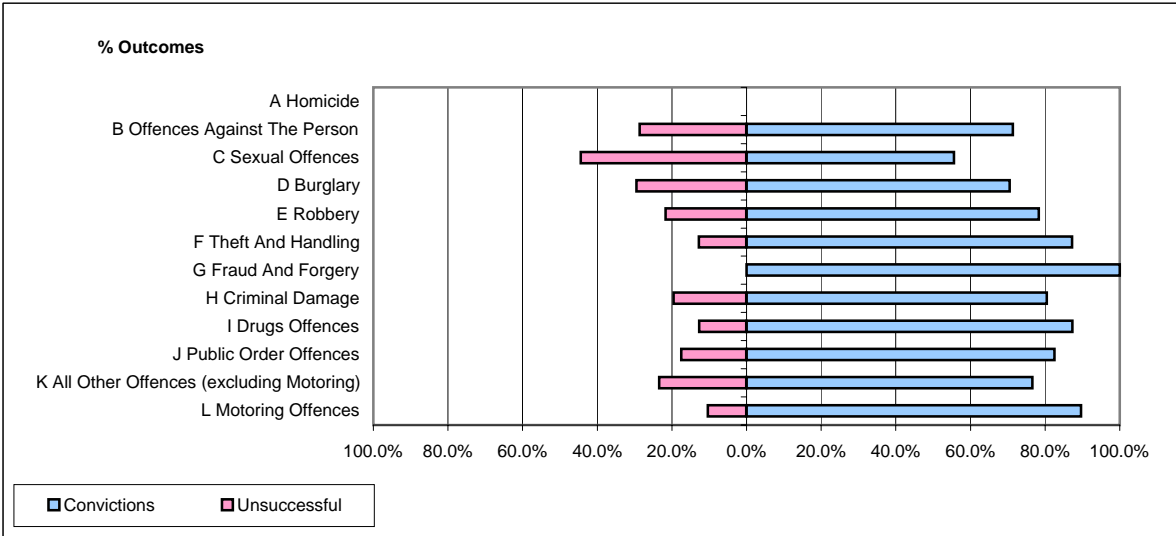


CPS OUTCOMES BY PRINCIPAL OFFENCE CATEGORY

December 2006

P37-Sussex



	Convictions		Unsuccessful	
	Number of Defendants	%	Number of Defendants	%
A Homicide	0	#DIV/0!	0	#DIV/0!
B Offences Against The Person	187	71.4%	75	28.6%
C Sexual Offences	10	55.6%	8	44.4%
D Burglary	31	70.5%	13	29.5%
E Robbery	18	78.3%	5	21.7%
F Theft And Handling	225	87.2%	33	12.8%
G Fraud And Forgery	26	100.0%	0	0.0%
H Criminal Damage	74	80.4%	18	19.6%
I Drugs Offences	48	87.3%	7	12.7%
J Public Order Offences	99	82.5%	21	17.5%
K All Other Offences (excluding Motoring)	59	76.6%	18	23.4%
L Motoring Offences	562	89.6%	65	10.4%
Admin Finalisations	0	0.0%	35	100.0%
TOTAL	1,339	81.8%	298	18.2%