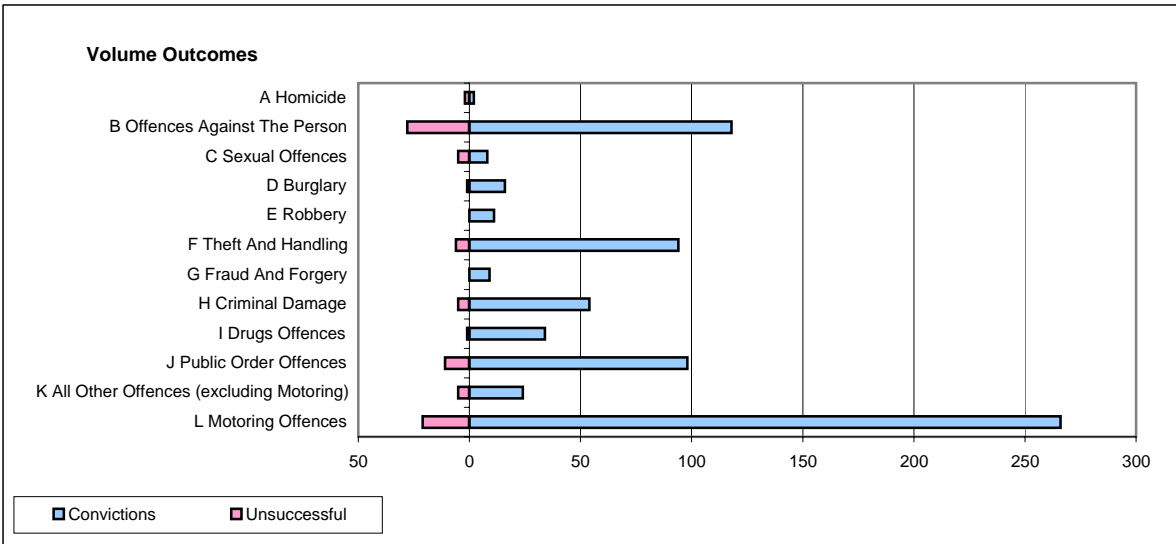
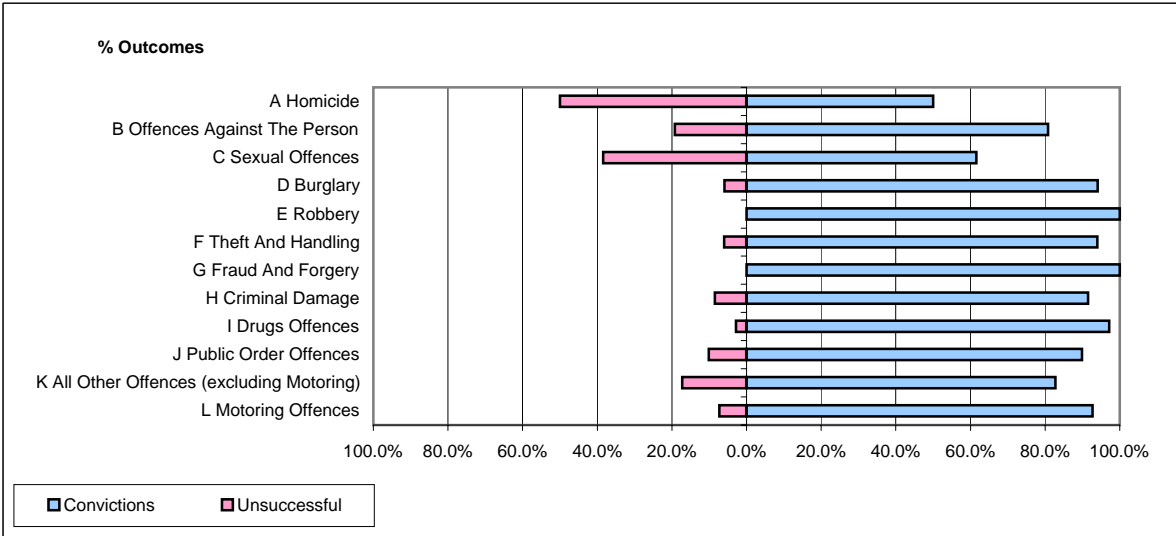


**CPS OUTCOMES BY PRINCIPAL OFFENCE CATEGORY**

**December 2006**

**P35-Suffolk**



	Convictions		Unsuccessful	
	Number of Defendants	%	Number of Defendants	%
<b>A Homicide</b>	<b>2</b>	<b>50.0%</b>	<b>2</b>	<b>50.0%</b>
<b>B Offences Against The Person</b>	<b>118</b>	<b>80.8%</b>	<b>28</b>	<b>19.2%</b>
<b>C Sexual Offences</b>	<b>8</b>	<b>61.5%</b>	<b>5</b>	<b>38.5%</b>
<b>D Burglary</b>	<b>16</b>	<b>94.1%</b>	<b>1</b>	<b>5.9%</b>
<b>E Robbery</b>	<b>11</b>	<b>100.0%</b>	<b>0</b>	<b>0.0%</b>
<b>F Theft And Handling</b>	<b>94</b>	<b>94.0%</b>	<b>6</b>	<b>6.0%</b>
<b>G Fraud And Forgery</b>	<b>9</b>	<b>100.0%</b>	<b>0</b>	<b>0.0%</b>
<b>H Criminal Damage</b>	<b>54</b>	<b>91.5%</b>	<b>5</b>	<b>8.5%</b>
<b>I Drugs Offences</b>	<b>34</b>	<b>97.1%</b>	<b>1</b>	<b>2.9%</b>
<b>J Public Order Offences</b>	<b>98</b>	<b>89.9%</b>	<b>11</b>	<b>10.1%</b>
<b>K All Other Offences (excluding Motoring)</b>	<b>24</b>	<b>82.8%</b>	<b>5</b>	<b>17.2%</b>
<b>L Motoring Offences</b>	<b>266</b>	<b>92.7%</b>	<b>21</b>	<b>7.3%</b>
<b>Admin Finalisations</b>	<b>0</b>	<b>0.0%</b>	<b>19</b>	<b>100.0%</b>
<b>TOTAL</b>	<b>734</b>	<b>87.6%</b>	<b>104</b>	<b>12.4%</b>