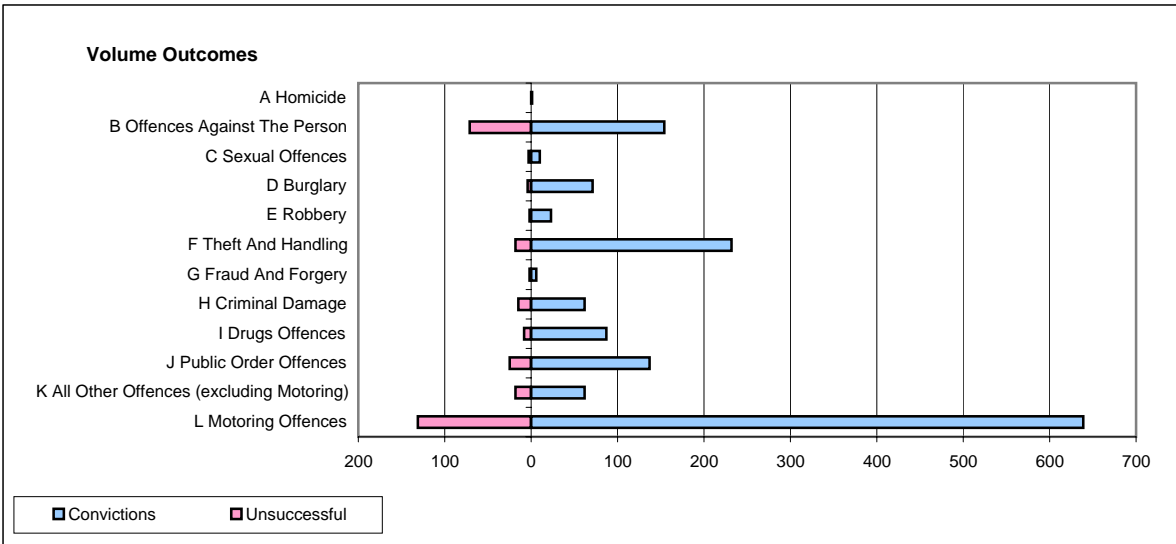
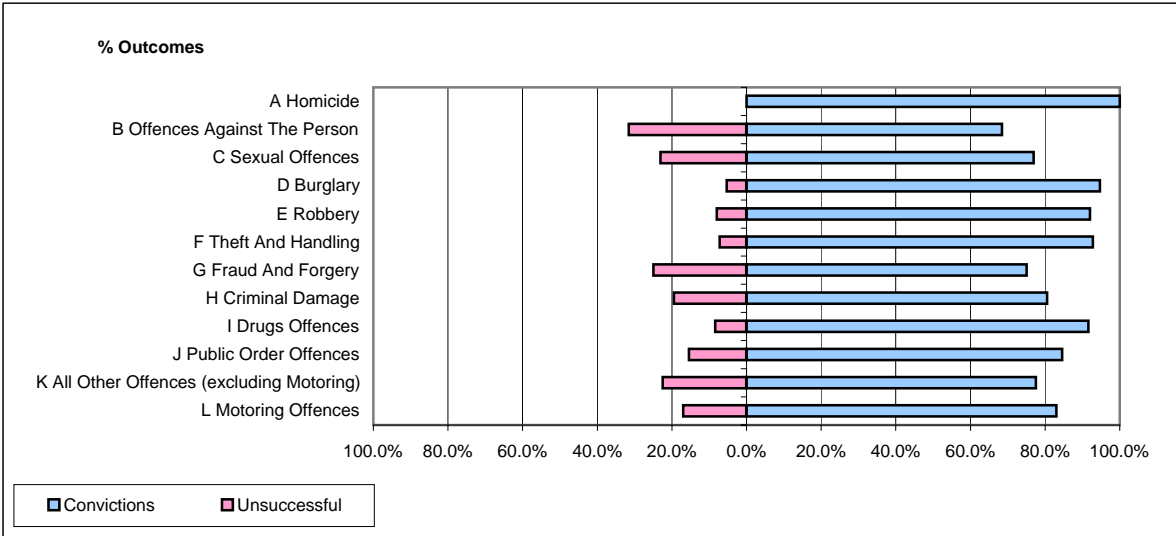


CPS OUTCOMES BY PRINCIPAL OFFENCE CATEGORY

December 2006

P32-SouthWales



	Convictions		Unsuccessful	
	Number of Defendants	%	Number of Defendants	%
A Homicide	1	100.0%	0	0.0%
B Offences Against The Person	154	68.4%	71	31.6%
C Sexual Offences	10	76.9%	3	23.1%
D Burglary	71	94.7%	4	5.3%
E Robbery	23	92.0%	2	8.0%
F Theft And Handling	232	92.8%	18	7.2%
G Fraud And Forgery	6	75.0%	2	25.0%
H Criminal Damage	62	80.5%	15	19.5%
I Drugs Offences	87	91.6%	8	8.4%
J Public Order Offences	137	84.6%	25	15.4%
K All Other Offences (excluding Motoring)	62	77.5%	18	22.5%
L Motoring Offences	639	83.0%	131	17.0%
Admin Finalisations	0	0.0%	89	100.0%
TOTAL	1,484	79.4%	386	20.6%