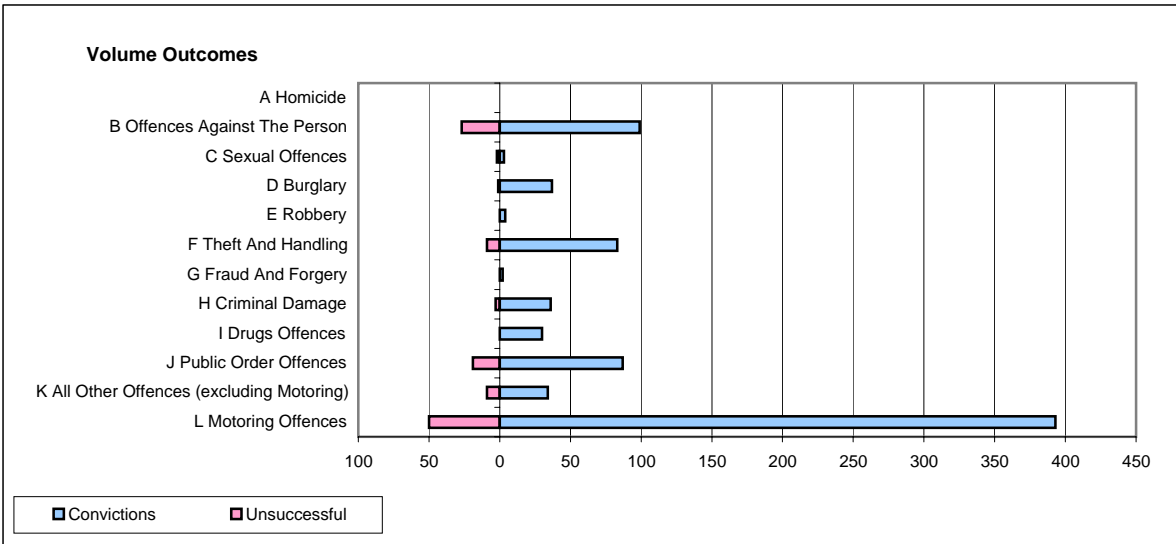
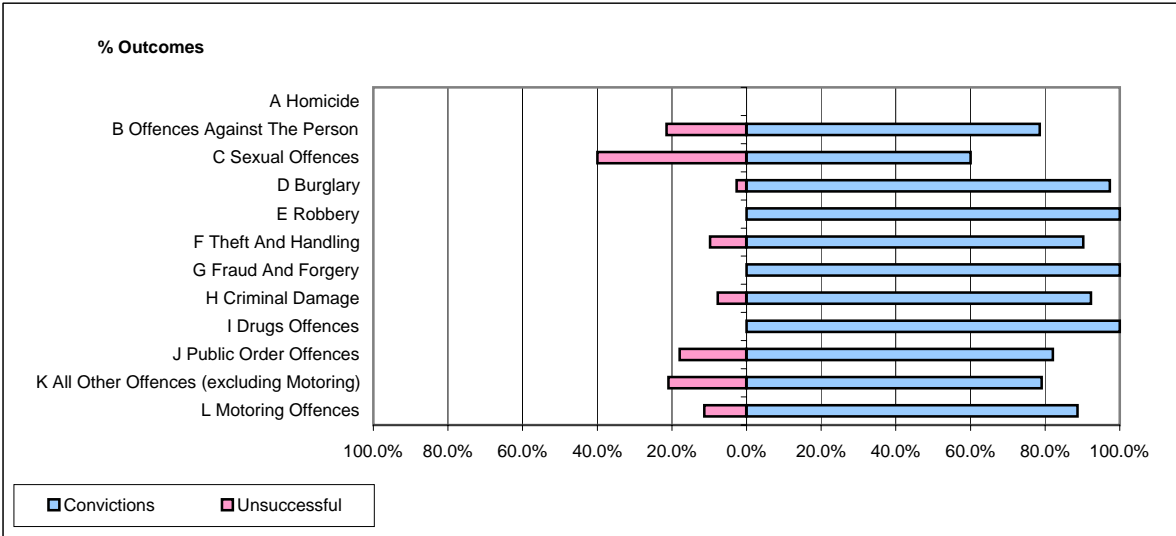


CPS OUTCOMES BY PRINCIPAL OFFENCE CATEGORY

December 2006

P29-NorthWales



	Convictions		Unsuccessful	
	Number of Defendants	%	Number of Defendants	%
A Homicide	0	#DIV/0!	0	#DIV/0!
B Offences Against The Person	99	78.6%	27	21.4%
C Sexual Offences	3	60.0%	2	40.0%
D Burglary	37	97.4%	1	2.6%
E Robbery	4	100.0%	0	0.0%
F Theft And Handling	83	90.2%	9	9.8%
G Fraud And Forgery	2	100.0%	0	0.0%
H Criminal Damage	36	92.3%	3	7.7%
I Drugs Offences	30	100.0%	0	0.0%
J Public Order Offences	87	82.1%	19	17.9%
K All Other Offences (excluding Motoring)	34	79.1%	9	20.9%
L Motoring Offences	393	88.7%	50	11.3%
Admin Finalisations	0	0.0%	9	100.0%
TOTAL	808	86.2%	129	13.8%