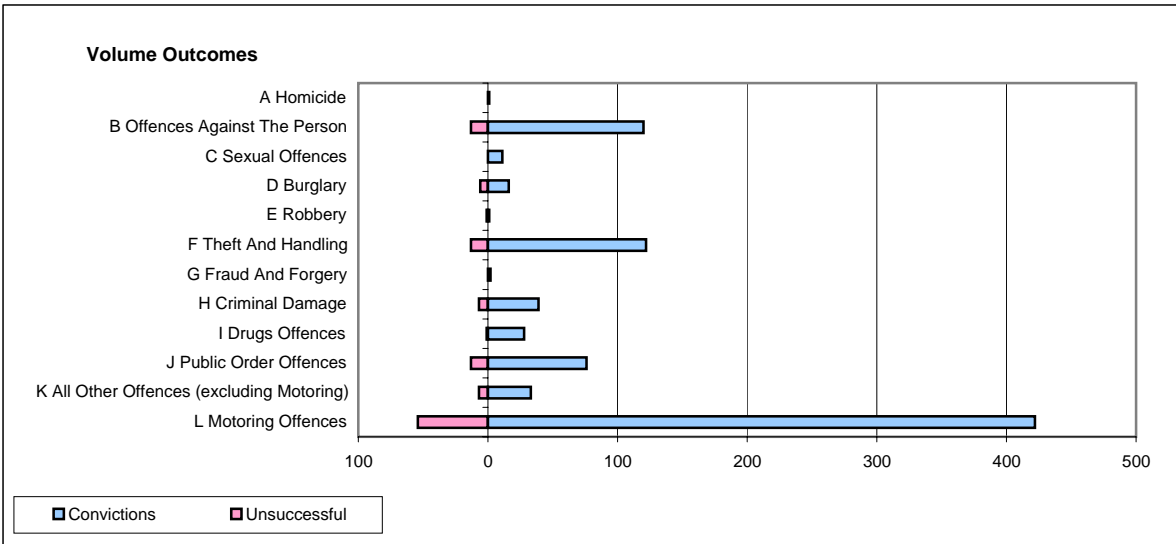
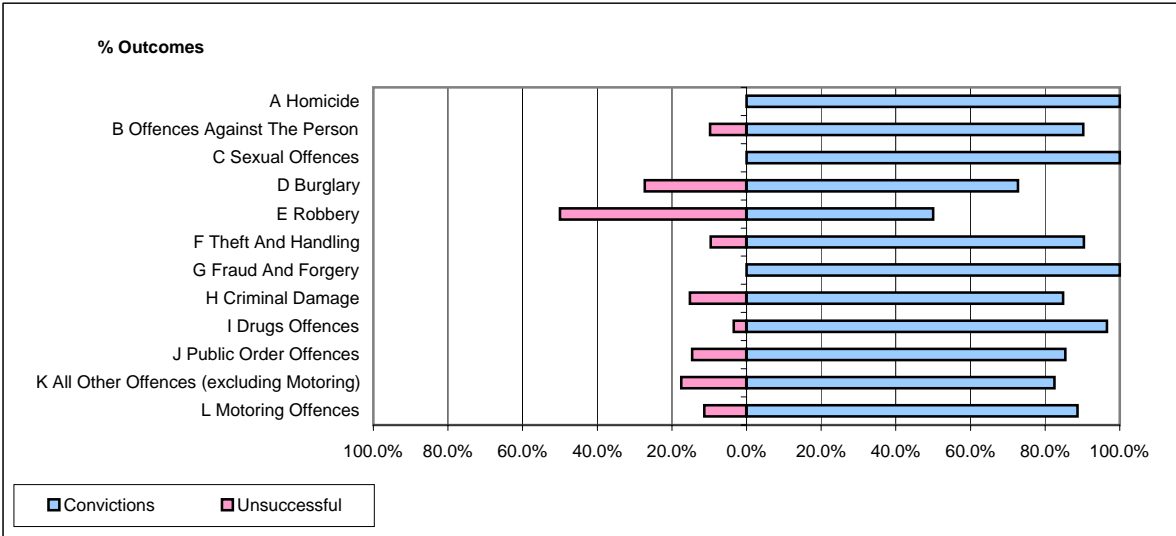


CPS OUTCOMES BY PRINCIPAL OFFENCE CATEGORY

December 2006

P26-Norfolk



	Convictions		Unsuccessful	
	Number of Defendants	%	Number of Defendants	%
A Homicide	1	100.0%	0	0.0%
B Offences Against The Person	120	90.2%	13	9.8%
C Sexual Offences	11	100.0%	0	0.0%
D Burglary	16	72.7%	6	27.3%
E Robbery	1	50.0%	1	50.0%
F Theft And Handling	122	90.4%	13	9.6%
G Fraud And Forgery	2	100.0%	0	0.0%
H Criminal Damage	39	84.8%	7	15.2%
I Drugs Offences	28	96.6%	1	3.4%
J Public Order Offences	76	85.4%	13	14.6%
K All Other Offences (excluding Motoring)	33	82.5%	7	17.5%
L Motoring Offences	422	88.7%	54	11.3%
Admin Finalisations	0	0.0%	23	100.0%
TOTAL	871	86.3%	138	13.7%