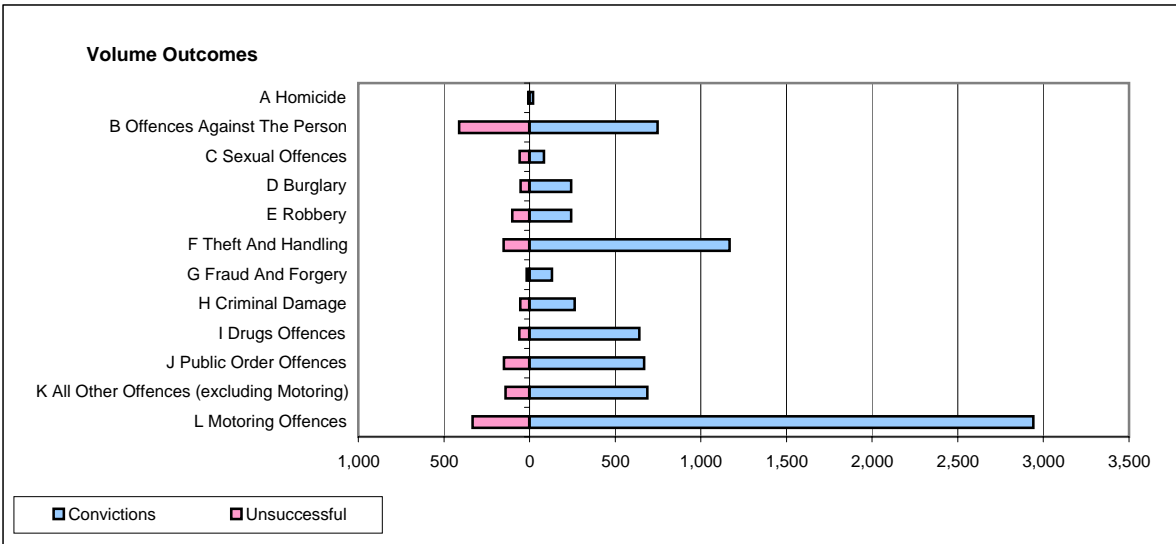
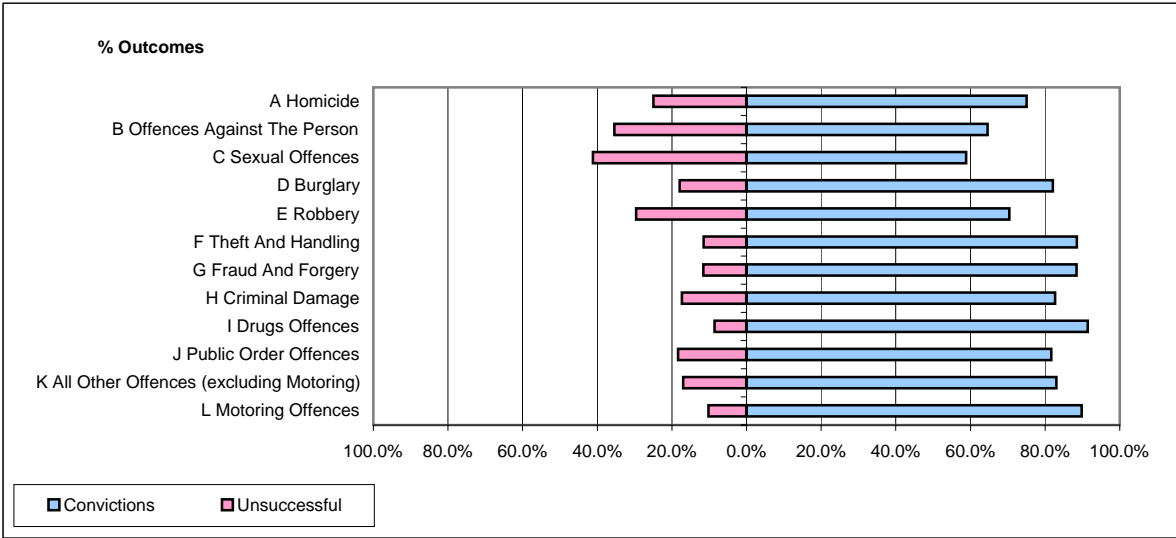


**CPS OUTCOMES BY PRINCIPAL OFFENCE CATEGORY**

December 2006

**P25-Metropolitan&City**



	Convictions		Unsuccessful	
	Number of Defendants	%	Number of Defendants	%
<b>A Homicide</b>	21	75.0%	7	25.0%
<b>B Offences Against The Person</b>	748	64.5%	411	35.5%
<b>C Sexual Offences</b>	83	58.9%	58	41.1%
<b>D Burglary</b>	243	82.1%	53	17.9%
<b>E Robbery</b>	243	70.4%	102	29.6%
<b>F Theft And Handling</b>	1,167	88.5%	151	11.5%
<b>G Fraud And Forgery</b>	130	88.4%	17	11.6%
<b>H Criminal Damage</b>	263	82.7%	55	17.3%
<b>I Drugs Offences</b>	640	91.4%	60	8.6%
<b>J Public Order Offences</b>	668	81.7%	150	18.3%
<b>K All Other Offences (excluding Motoring)</b>	688	83.0%	141	17.0%
<b>L Motoring Offences</b>	2,942	89.8%	333	10.2%
<b>Admin Finalisations</b>	0	0.0%	551	100.0%
<b>TOTAL</b>	7,836	79.0%	2,089	21.0%