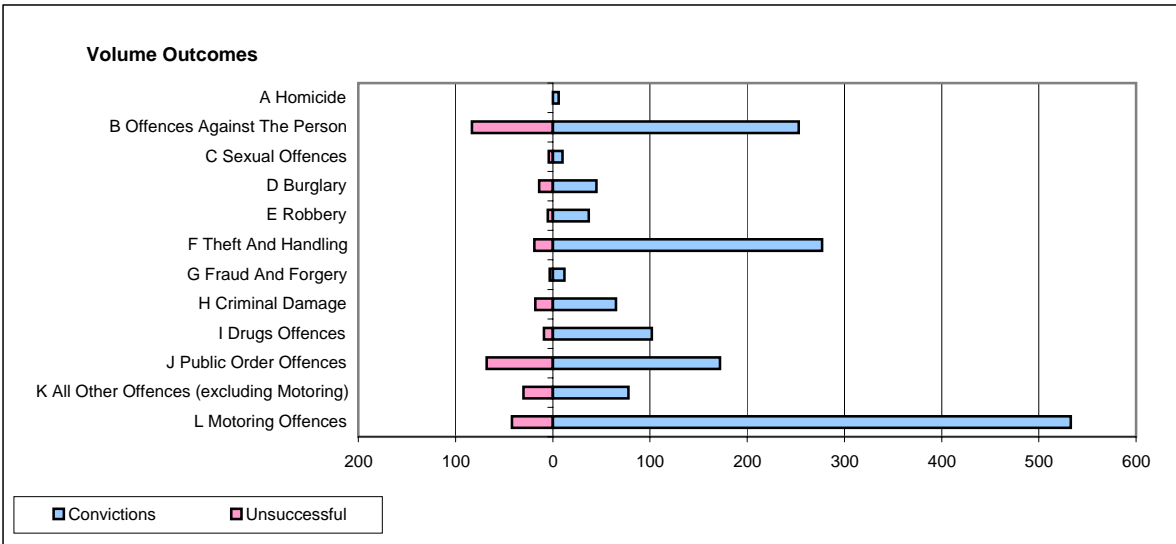
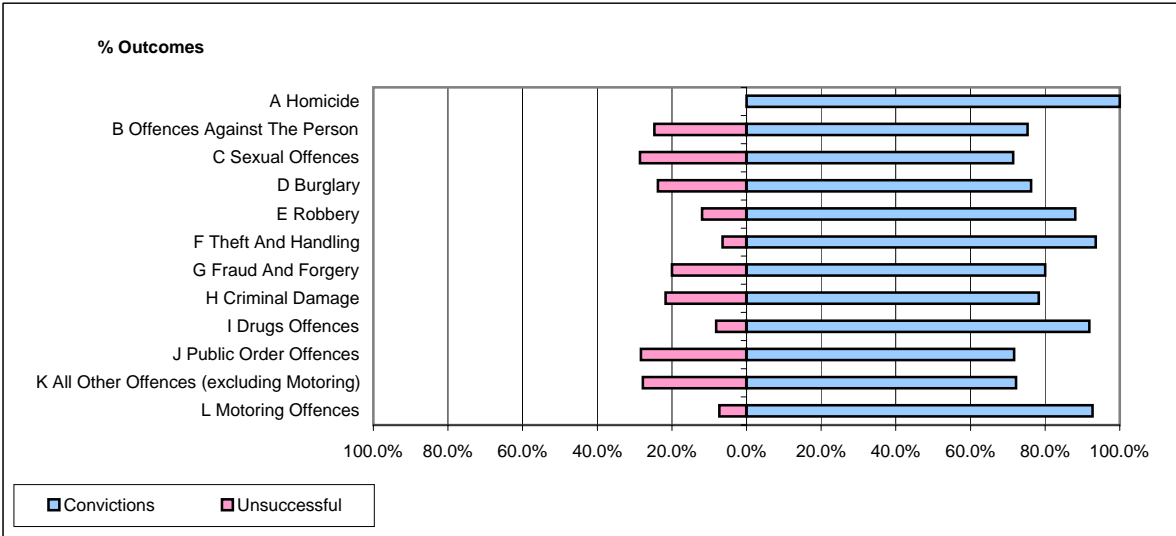


CPS OUTCOMES BY PRINCIPAL OFFENCE CATEGORY

December 2006

P24-Merseyside



	Convictions		Unsuccessful	
	Number of Defendants	%	Number of Defendants	%
A Homicide	6	100.0%	0	0.0%
B Offences Against The Person	253	75.3%	83	24.7%
C Sexual Offences	10	71.4%	4	28.6%
D Burglary	45	76.3%	14	23.7%
E Robbery	37	88.1%	5	11.9%
F Theft And Handling	277	93.6%	19	6.4%
G Fraud And Forgery	12	80.0%	3	20.0%
H Criminal Damage	65	78.3%	18	21.7%
I Drugs Offences	102	91.9%	9	8.1%
J Public Order Offences	172	71.7%	68	28.3%
K All Other Offences (excluding Motoring)	78	72.2%	30	27.8%
L Motoring Offences	533	92.7%	42	7.3%
Admin Finalisations	0	0.0%	39	100.0%
TOTAL	1,590	82.6%	334	17.4%