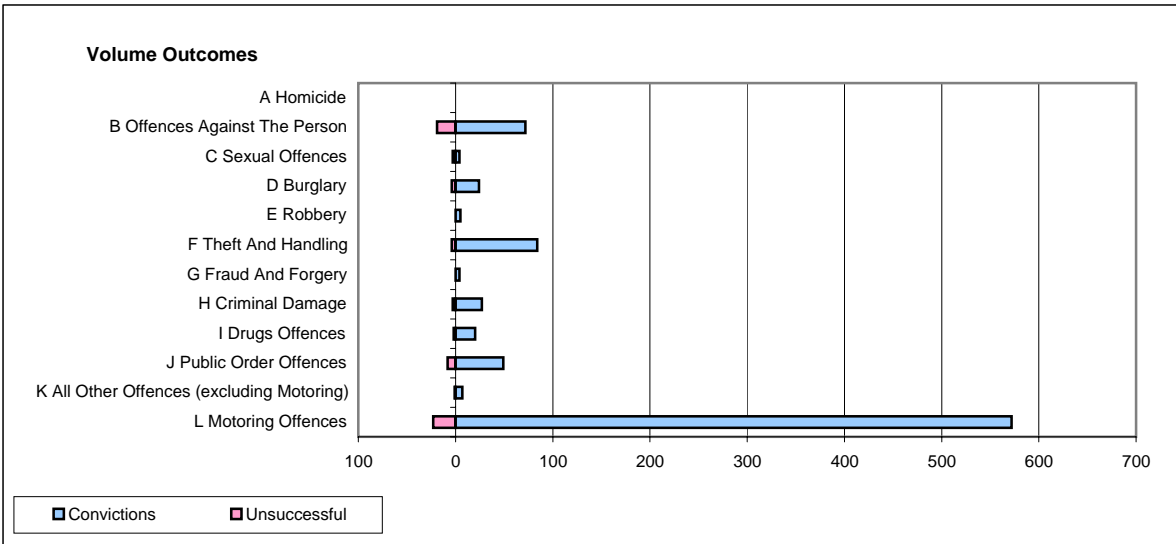
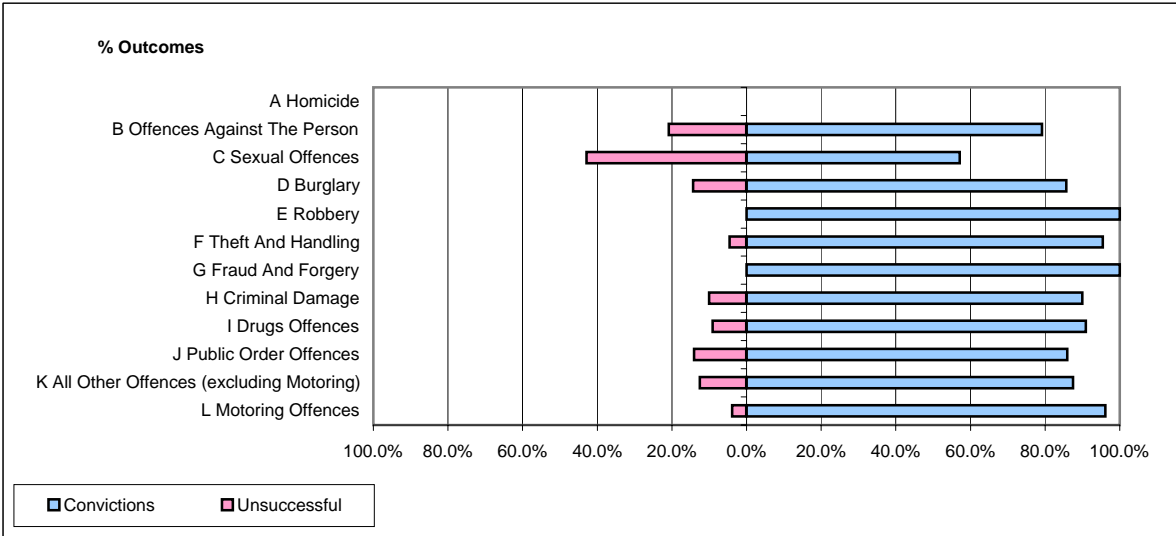


CPS OUTCOMES BY PRINCIPAL OFFENCE CATEGORY

December 2006

P23-Lincolnshire



	Convictions		Unsuccessful	
	Number of Defendants	%	Number of Defendants	%
A Homicide	0	#DIV/0!	0	#DIV/0!
B Offences Against The Person	72	79.1%	19	20.9%
C Sexual Offences	4	57.1%	3	42.9%
D Burglary	24	85.7%	4	14.3%
E Robbery	5	100.0%	0	0.0%
F Theft And Handling	84	95.5%	4	4.5%
G Fraud And Forgery	4	100.0%	0	0.0%
H Criminal Damage	27	90.0%	3	10.0%
I Drugs Offences	20	90.9%	2	9.1%
J Public Order Offences	49	86.0%	8	14.0%
K All Other Offences (excluding Motoring)	7	87.5%	1	12.5%
L Motoring Offences	572	96.1%	23	3.9%
Admin Finalisations	0	0.0%	19	100.0%
TOTAL	868	91.0%	86	9.0%