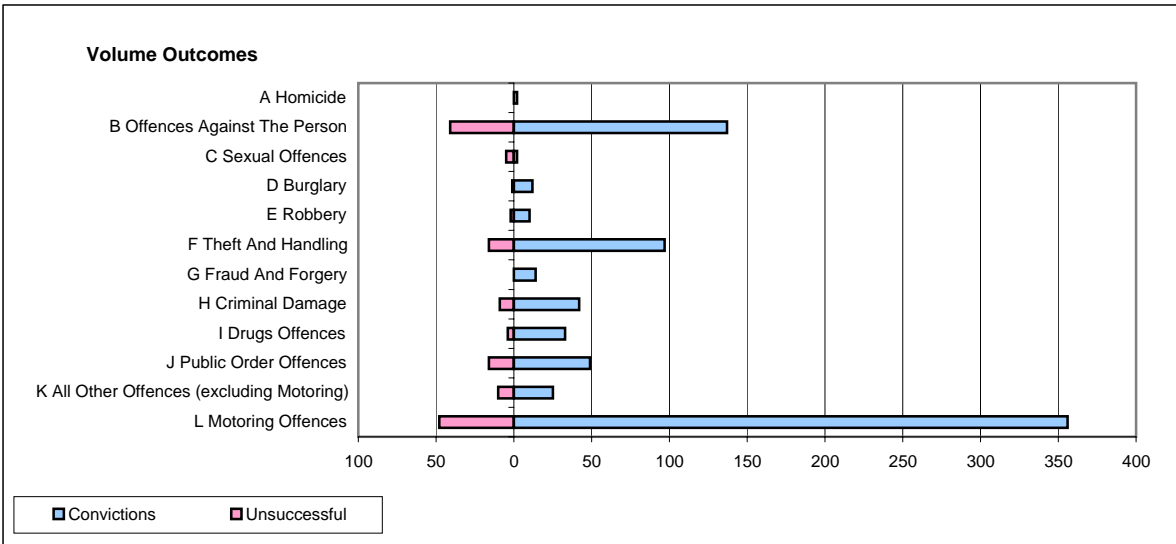
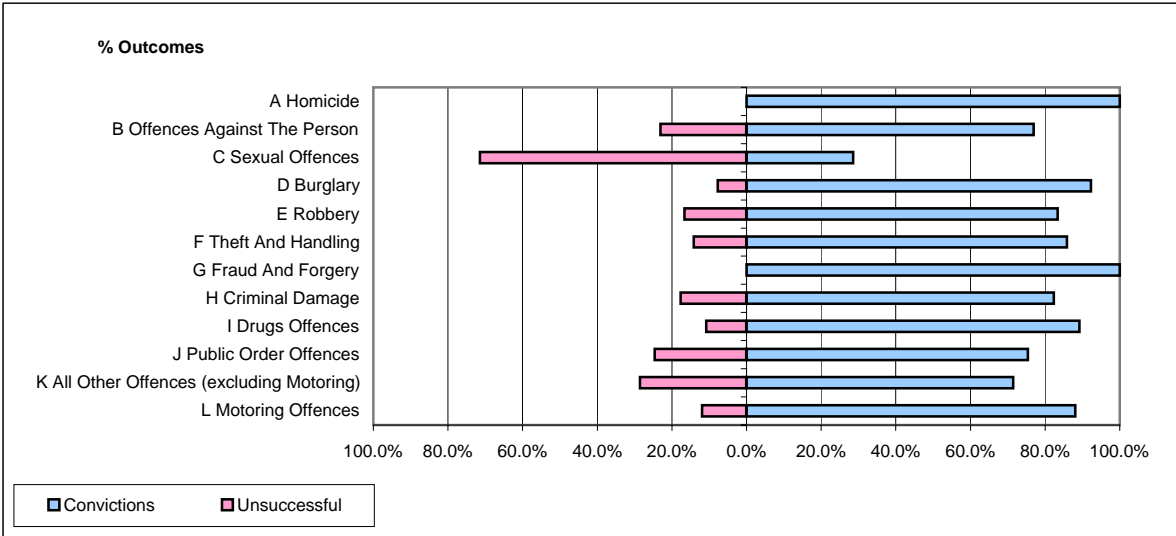


CPS OUTCOMES BY PRINCIPAL OFFENCE CATEGORY

December 2006

P22-Leicestershire



	Convictions		Unsuccessful	
	Number of Defendants	%	Number of Defendants	%
A Homicide	2	100.0%	0	0.0%
B Offences Against The Person	137	77.0%	41	23.0%
C Sexual Offences	2	28.6%	5	71.4%
D Burglary	12	92.3%	1	7.7%
E Robbery	10	83.3%	2	16.7%
F Theft And Handling	97	85.8%	16	14.2%
G Fraud And Forgery	14	100.0%	0	0.0%
H Criminal Damage	42	82.4%	9	17.6%
I Drugs Offences	33	89.2%	4	10.8%
J Public Order Offences	49	75.4%	16	24.6%
K All Other Offences (excluding Motoring)	25	71.4%	10	28.6%
L Motoring Offences	356	88.1%	48	11.9%
Admin Finalisations	0	0.0%	37	100.0%
TOTAL	779	80.5%	189	19.5%