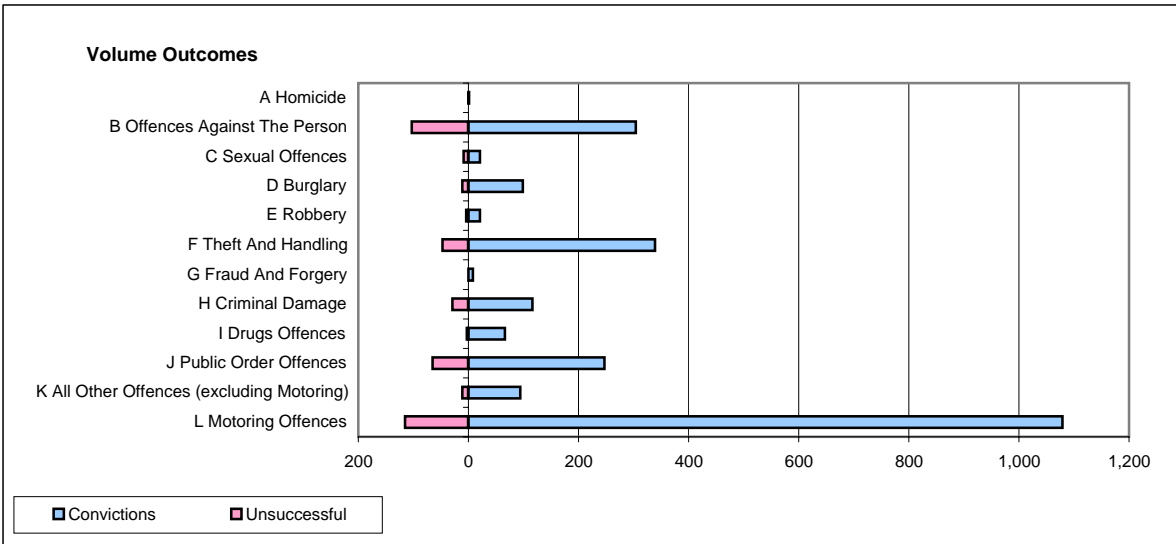
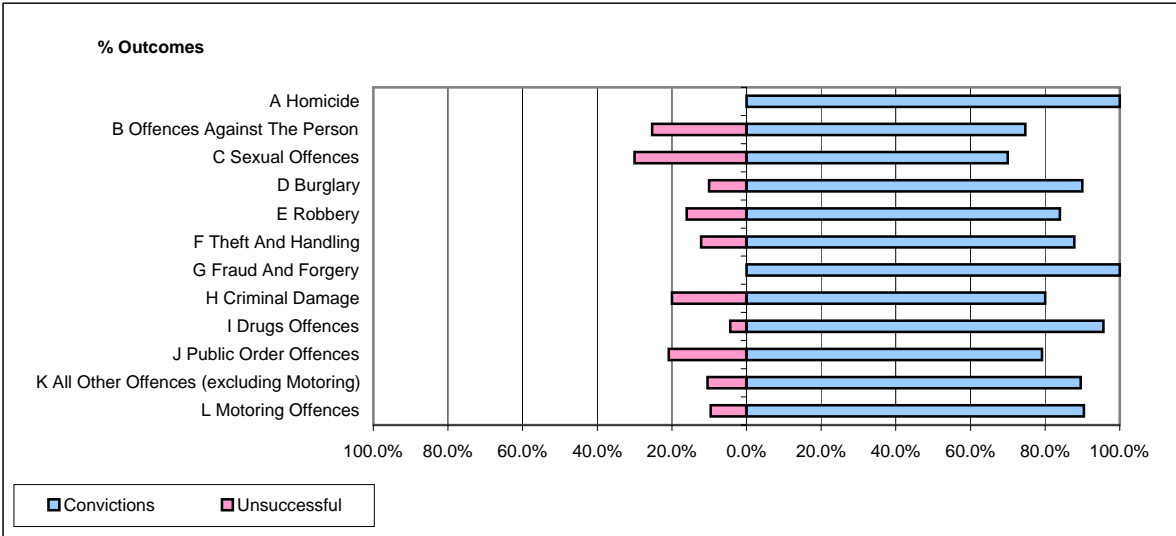


**CPS OUTCOMES BY PRINCIPAL OFFENCE CATEGORY**

**December 2006**

**P21-Lancashire**



	Convictions		Unsuccessful	
	Number of Defendants	%	Number of Defendants	%
<b>A Homicide</b>	<b>1</b>	<b>100.0%</b>	<b>0</b>	<b>0.0%</b>
<b>B Offences Against The Person</b>	<b>304</b>	<b>74.7%</b>	<b>103</b>	<b>25.3%</b>
<b>C Sexual Offences</b>	<b>21</b>	<b>70.0%</b>	<b>9</b>	<b>30.0%</b>
<b>D Burglary</b>	<b>99</b>	<b>90.0%</b>	<b>11</b>	<b>10.0%</b>
<b>E Robbery</b>	<b>21</b>	<b>84.0%</b>	<b>4</b>	<b>16.0%</b>
<b>F Theft And Handling</b>	<b>339</b>	<b>87.8%</b>	<b>47</b>	<b>12.2%</b>
<b>G Fraud And Forgery</b>	<b>8</b>	<b>100.0%</b>	<b>0</b>	<b>0.0%</b>
<b>H Criminal Damage</b>	<b>116</b>	<b>80.0%</b>	<b>29</b>	<b>20.0%</b>
<b>I Drugs Offences</b>	<b>66</b>	<b>95.7%</b>	<b>3</b>	<b>4.3%</b>
<b>J Public Order Offences</b>	<b>247</b>	<b>79.2%</b>	<b>65</b>	<b>20.8%</b>
<b>K All Other Offences (excluding Motoring)</b>	<b>94</b>	<b>89.5%</b>	<b>11</b>	<b>10.5%</b>
<b>L Motoring Offences</b>	<b>1,079</b>	<b>90.4%</b>	<b>115</b>	<b>9.6%</b>
<b>Admin Finalisations</b>	<b>0</b>	<b>0.0%</b>	<b>64</b>	<b>100.0%</b>
<b>TOTAL</b>	<b>2,395</b>	<b>83.9%</b>	<b>461</b>	<b>16.1%</b>