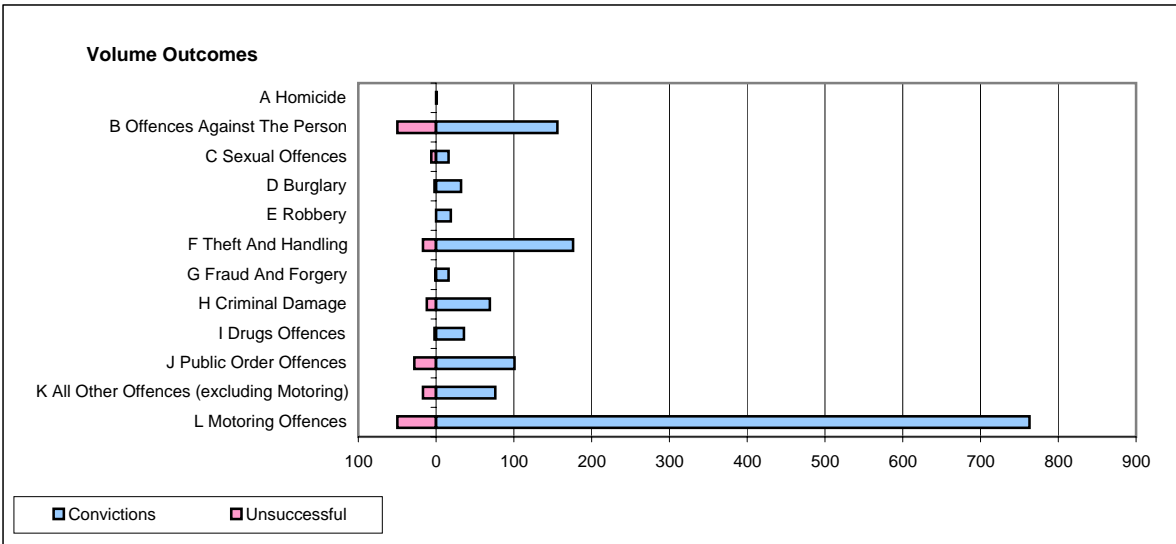
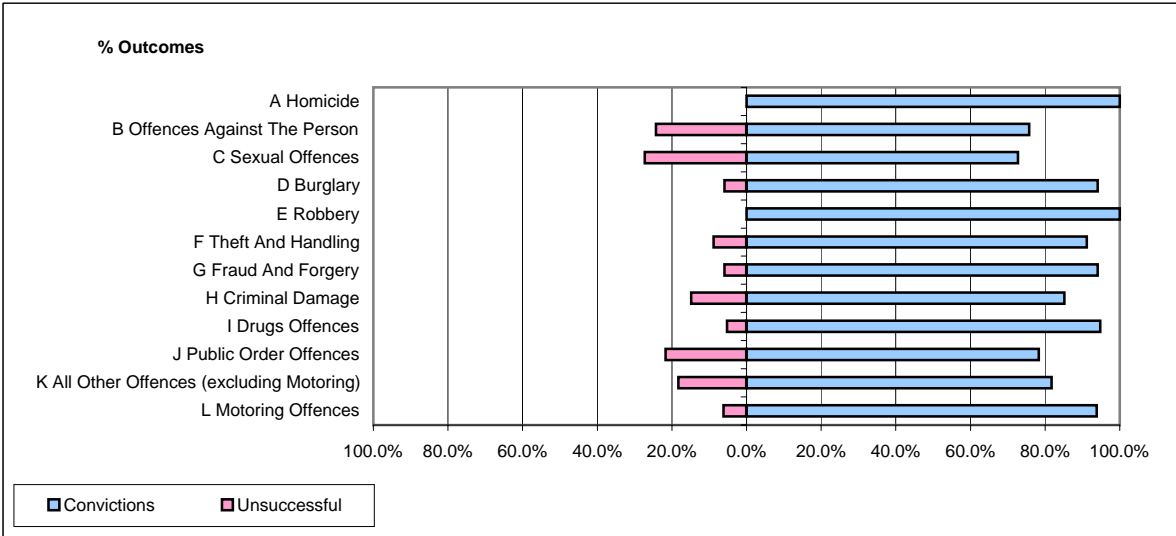


CPS OUTCOMES BY PRINCIPAL OFFENCE CATEGORY

December 2006

P20-Kent



	Convictions		Unsuccessful	
	Number of Defendants	%	Number of Defendants	%
A Homicide	1	100.0%	0	0.0%
B Offences Against The Person	156	75.7%	50	24.3%
C Sexual Offences	16	72.7%	6	27.3%
D Burglary	32	94.1%	2	5.9%
E Robbery	19	100.0%	0	0.0%
F Theft And Handling	176	91.2%	17	8.8%
G Fraud And Forgery	16	94.1%	1	5.9%
H Criminal Damage	69	85.2%	12	14.8%
I Drugs Offences	36	94.7%	2	5.3%
J Public Order Offences	101	78.3%	28	21.7%
K All Other Offences (excluding Motoring)	76	81.7%	17	18.3%
L Motoring Offences	763	93.8%	50	6.2%
Admin Finalisations	0	0.0%	39	100.0%
TOTAL	1,461	86.7%	224	13.3%