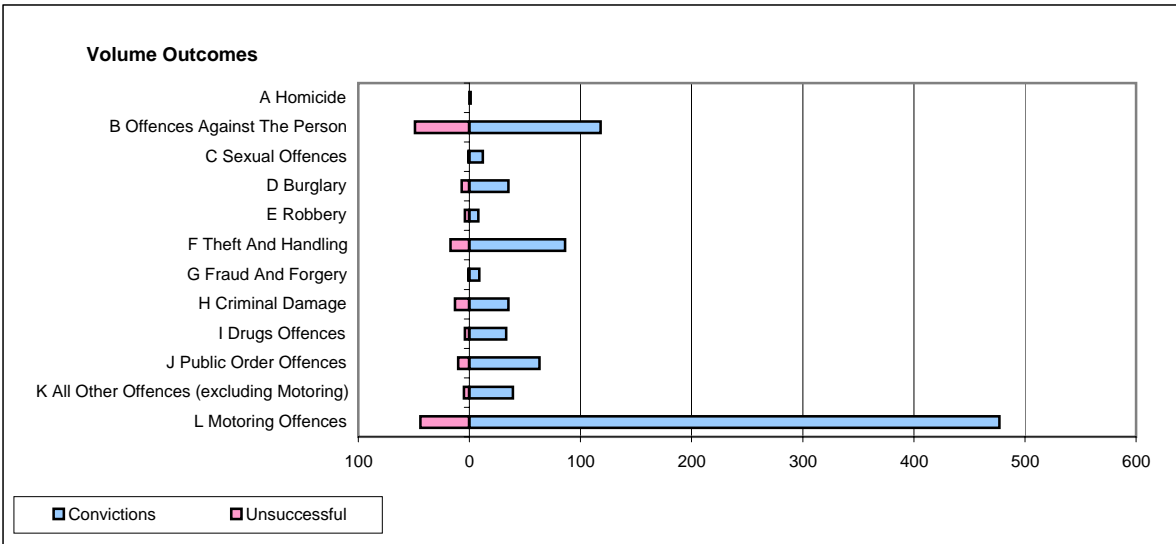
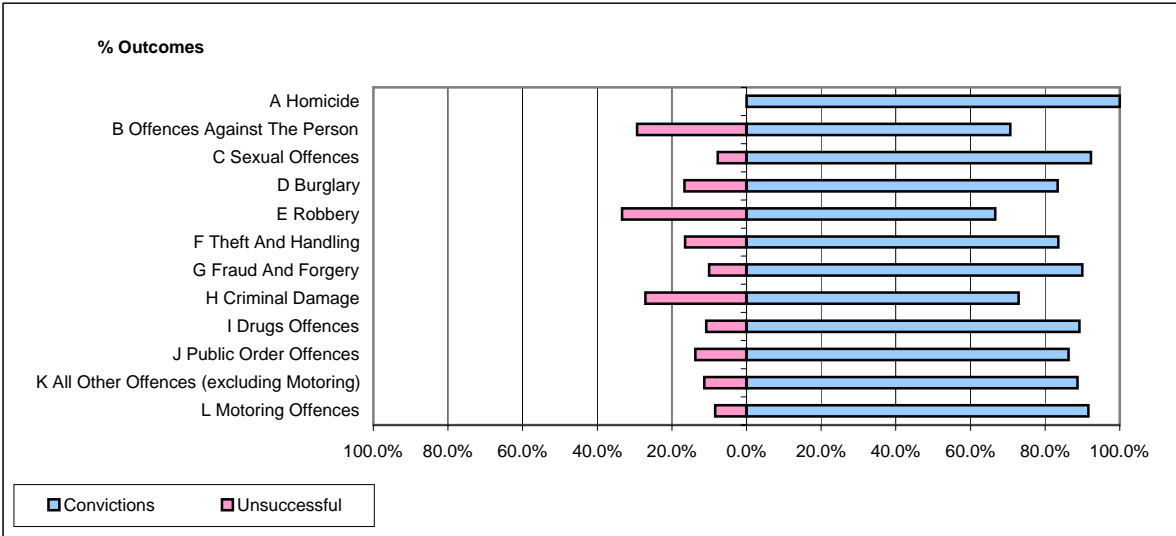


**CPS OUTCOMES BY PRINCIPAL OFFENCE CATEGORY**

**December 2006**

**P18-Hertfordshire**



	Convictions		Unsuccessful	
	Number of Defendants	%	Number of Defendants	%
<b>A Homicide</b>	<b>1</b>	<b>100.0%</b>	<b>0</b>	<b>0.0%</b>
<b>B Offences Against The Person</b>	<b>118</b>	<b>70.7%</b>	<b>49</b>	<b>29.3%</b>
<b>C Sexual Offences</b>	<b>12</b>	<b>92.3%</b>	<b>1</b>	<b>7.7%</b>
<b>D Burglary</b>	<b>35</b>	<b>83.3%</b>	<b>7</b>	<b>16.7%</b>
<b>E Robbery</b>	<b>8</b>	<b>66.7%</b>	<b>4</b>	<b>33.3%</b>
<b>F Theft And Handling</b>	<b>86</b>	<b>83.5%</b>	<b>17</b>	<b>16.5%</b>
<b>G Fraud And Forgery</b>	<b>9</b>	<b>90.0%</b>	<b>1</b>	<b>10.0%</b>
<b>H Criminal Damage</b>	<b>35</b>	<b>72.9%</b>	<b>13</b>	<b>27.1%</b>
<b>I Drugs Offences</b>	<b>33</b>	<b>89.2%</b>	<b>4</b>	<b>10.8%</b>
<b>J Public Order Offences</b>	<b>63</b>	<b>86.3%</b>	<b>10</b>	<b>13.7%</b>
<b>K All Other Offences (excluding Motoring)</b>	<b>39</b>	<b>88.6%</b>	<b>5</b>	<b>11.4%</b>
<b>L Motoring Offences</b>	<b>477</b>	<b>91.6%</b>	<b>44</b>	<b>8.4%</b>
<b>Admin Finalisations</b>	<b>0</b>	<b>0.0%</b>	<b>36</b>	<b>100.0%</b>
<b>TOTAL</b>	<b>916</b>	<b>82.7%</b>	<b>191</b>	<b>17.3%</b>