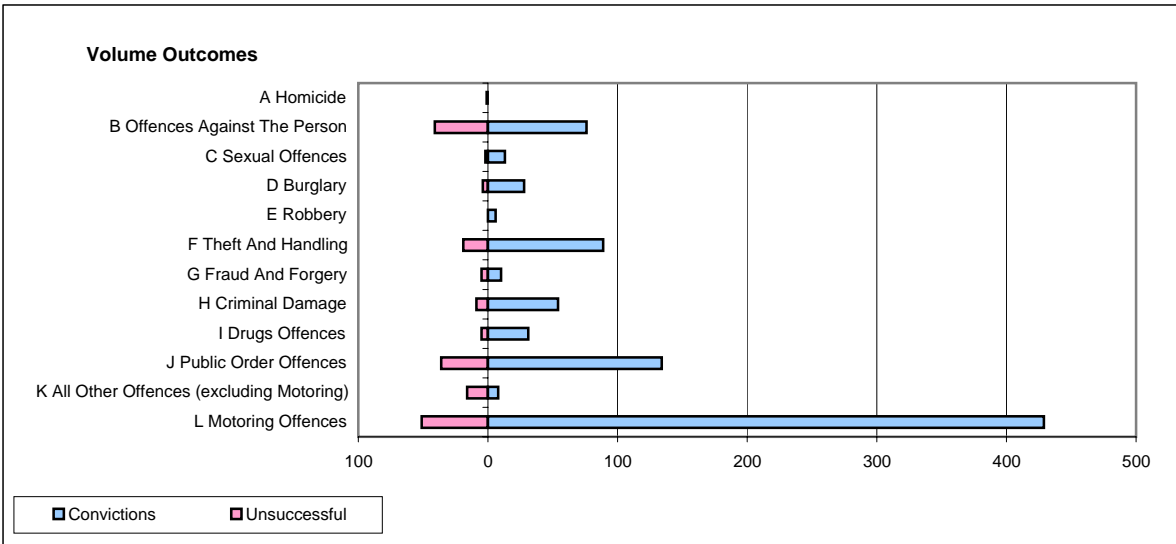
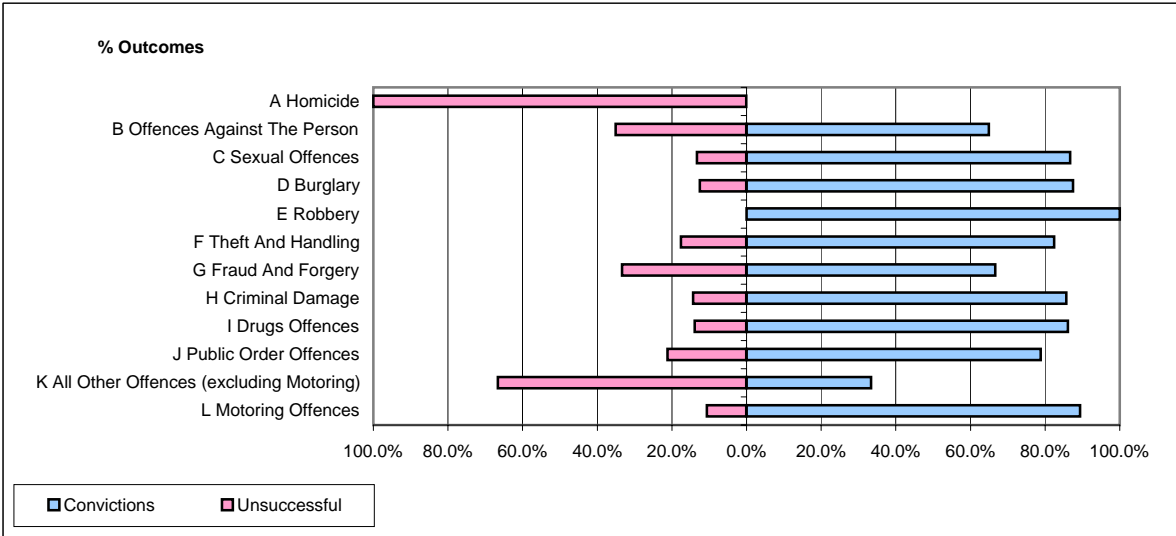


**CPS OUTCOMES BY PRINCIPAL OFFENCE CATEGORY**

**December 2006**

**P16-Gwent**



	Convictions		Unsuccessful	
	Number of Defendants	%	Number of Defendants	%
<b>A Homicide</b>	<b>0</b>	<b>0.0%</b>	<b>1</b>	<b>100.0%</b>
<b>B Offences Against The Person</b>	<b>76</b>	<b>65.0%</b>	<b>41</b>	<b>35.0%</b>
<b>C Sexual Offences</b>	<b>13</b>	<b>86.7%</b>	<b>2</b>	<b>13.3%</b>
<b>D Burglary</b>	<b>28</b>	<b>87.5%</b>	<b>4</b>	<b>12.5%</b>
<b>E Robbery</b>	<b>6</b>	<b>100.0%</b>	<b>0</b>	<b>0.0%</b>
<b>F Theft And Handling</b>	<b>89</b>	<b>82.4%</b>	<b>19</b>	<b>17.6%</b>
<b>G Fraud And Forgery</b>	<b>10</b>	<b>66.7%</b>	<b>5</b>	<b>33.3%</b>
<b>H Criminal Damage</b>	<b>54</b>	<b>85.7%</b>	<b>9</b>	<b>14.3%</b>
<b>I Drugs Offences</b>	<b>31</b>	<b>86.1%</b>	<b>5</b>	<b>13.9%</b>
<b>J Public Order Offences</b>	<b>134</b>	<b>78.8%</b>	<b>36</b>	<b>21.2%</b>
<b>K All Other Offences (excluding Motoring)</b>	<b>8</b>	<b>33.3%</b>	<b>16</b>	<b>66.7%</b>
<b>L Motoring Offences</b>	<b>429</b>	<b>89.4%</b>	<b>51</b>	<b>10.6%</b>
<b>Admin Finalisations</b>	<b>0</b>	<b>0.0%</b>	<b>25</b>	<b>100.0%</b>
<b>TOTAL</b>	<b>878</b>	<b>80.4%</b>	<b>214</b>	<b>19.6%</b>