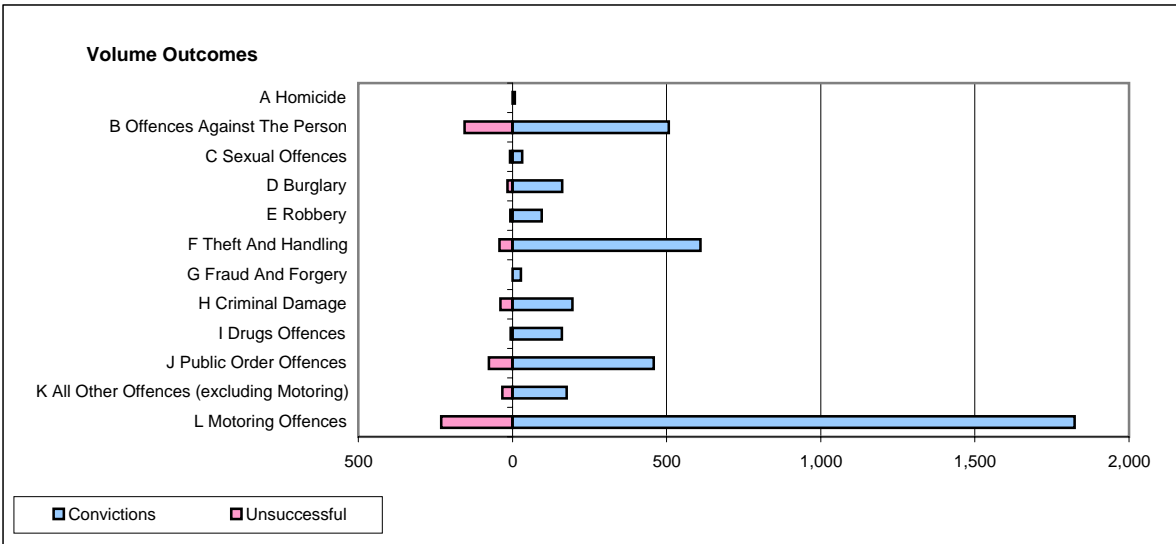
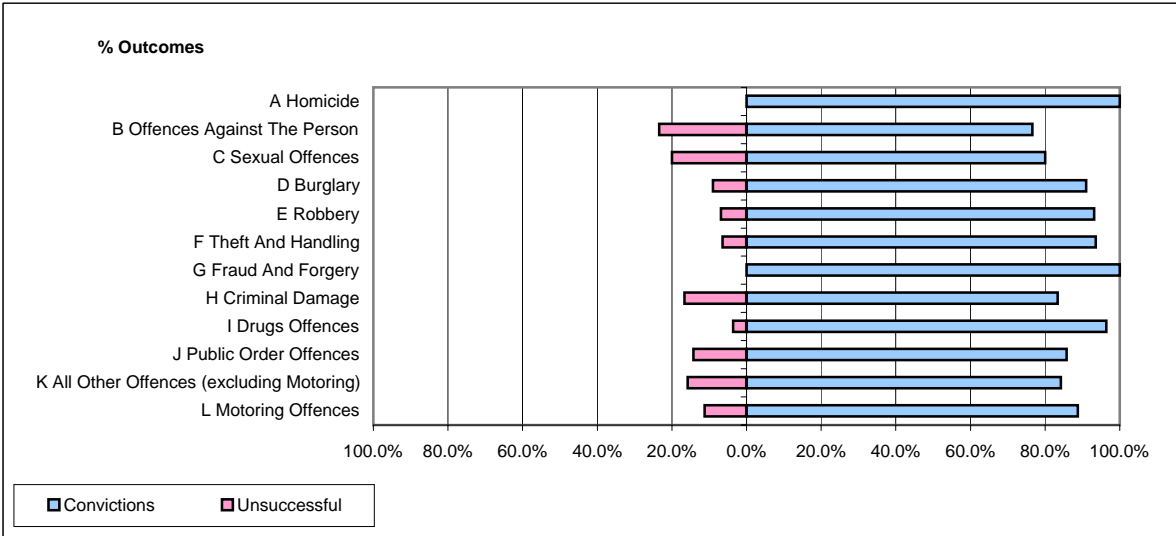


CPS OUTCOMES BY PRINCIPAL OFFENCE CATEGORY

December 2006

P15-GreaterManchester



	Convictions		Unsuccessful	
	Number of Defendants	%	Number of Defendants	%
A Homicide	8	100.0%	0	0.0%
B Offences Against The Person	507	76.6%	155	23.4%
C Sexual Offences	32	80.0%	8	20.0%
D Burglary	161	91.0%	16	9.0%
E Robbery	95	93.1%	7	6.9%
F Theft And Handling	610	93.6%	42	6.4%
G Fraud And Forgery	27	100.0%	0	0.0%
H Criminal Damage	195	83.3%	39	16.7%
I Drugs Offences	160	96.4%	6	3.6%
J Public Order Offences	458	85.8%	76	14.2%
K All Other Offences (excluding Motoring)	176	84.2%	33	15.8%
L Motoring Offences	1,824	88.8%	231	11.2%
Admin Finalisations	0	0.0%	103	100.0%
TOTAL	4,253	85.6%	716	14.4%