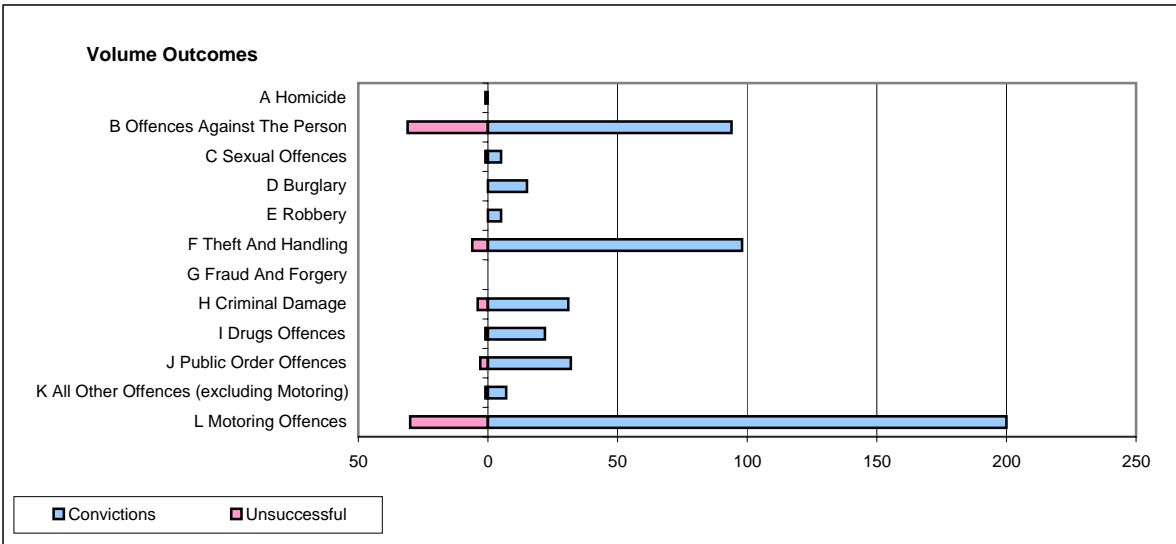
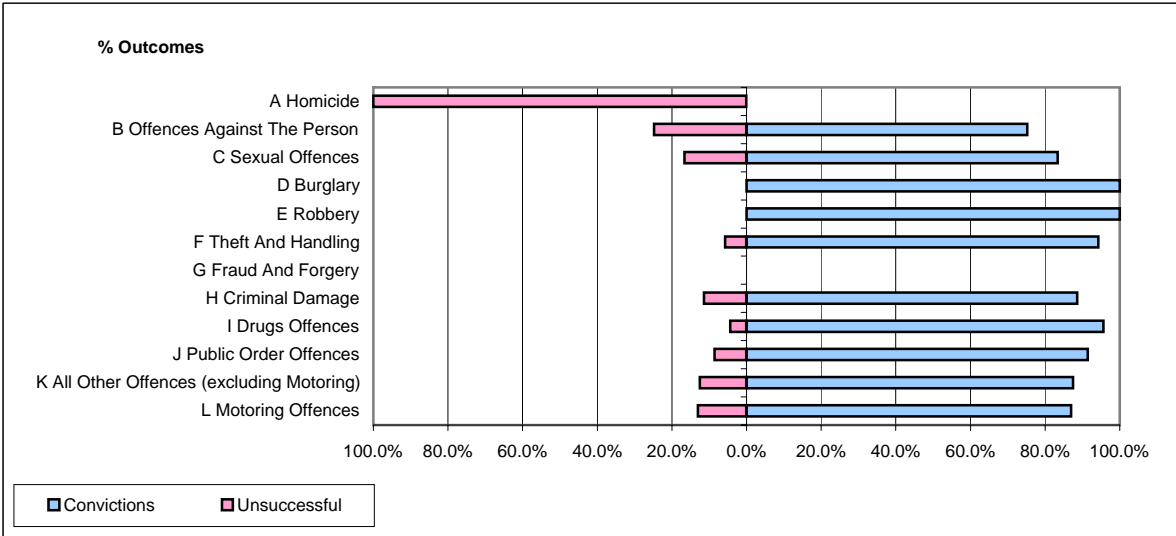


CPS OUTCOMES BY PRINCIPAL OFFENCE CATEGORY

December 2006

P14-Gloucestershire



	Convictions		Unsuccessful	
	Number of Defendants	%	Number of Defendants	%
A Homicide	0	0.0%	1	100.0%
B Offences Against The Person	94	75.2%	31	24.8%
C Sexual Offences	5	83.3%	1	16.7%
D Burglary	15	100.0%	0	0.0%
E Robbery	5	100.0%	0	0.0%
F Theft And Handling	98	94.2%	6	5.8%
G Fraud And Forgery	0	#DIV/0!	0	#DIV/0!
H Criminal Damage	31	88.6%	4	11.4%
I Drugs Offences	22	95.7%	1	4.3%
J Public Order Offences	32	91.4%	3	8.6%
K All Other Offences (excluding Motoring)	7	87.5%	1	12.5%
L Motoring Offences	200	87.0%	30	13.0%
Admin Finalisations	0	0.0%	14	100.0%
TOTAL	509	84.7%	92	15.3%