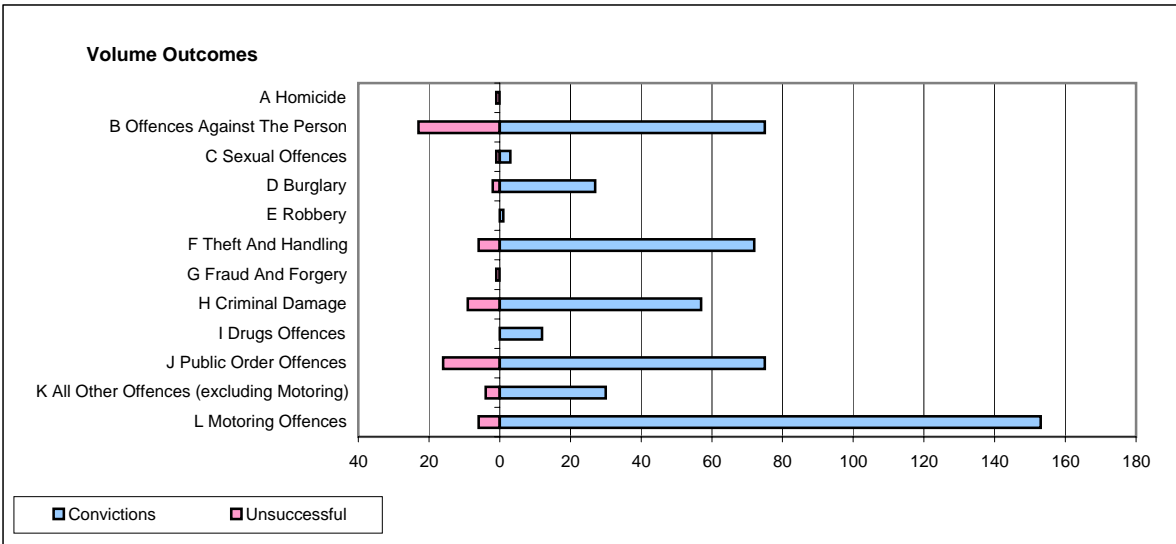
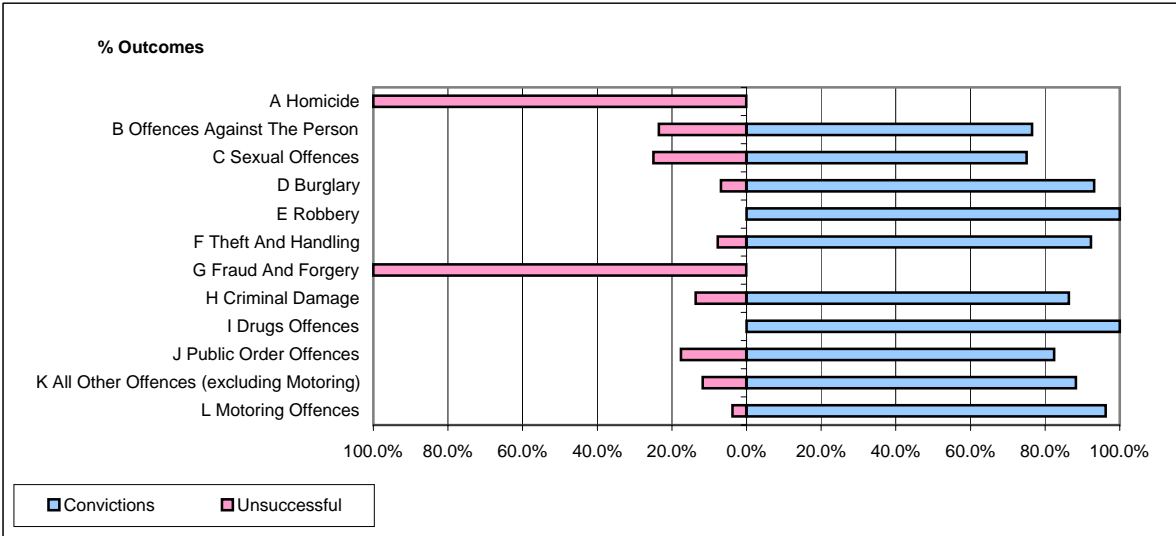


CPS OUTCOMES BY PRINCIPAL OFFENCE CATEGORY

December 2006

P11-Durham



	Convictions		Unsuccessful	
	Number of Defendants	%	Number of Defendants	%
A Homicide	0	0.0%	1	100.0%
B Offences Against The Person	75	76.5%	23	23.5%
C Sexual Offences	3	75.0%	1	25.0%
D Burglary	27	93.1%	2	6.9%
E Robbery	1	100.0%	0	0.0%
F Theft And Handling	72	92.3%	6	7.7%
G Fraud And Forgery	0	0.0%	1	100.0%
H Criminal Damage	57	86.4%	9	13.6%
I Drugs Offences	12	100.0%	0	0.0%
J Public Order Offences	75	82.4%	16	17.6%
K All Other Offences (excluding Motoring)	30	88.2%	4	11.8%
L Motoring Offences	153	96.2%	6	3.8%
Admin Finalisations	0	0.0%	22	100.0%
TOTAL	505	84.7%	91	15.3%