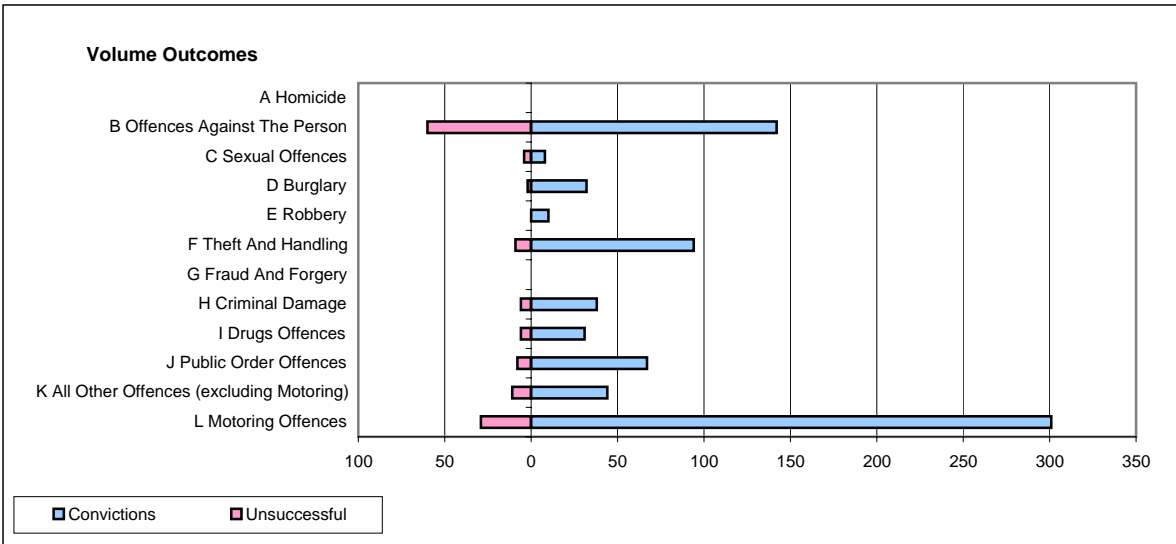
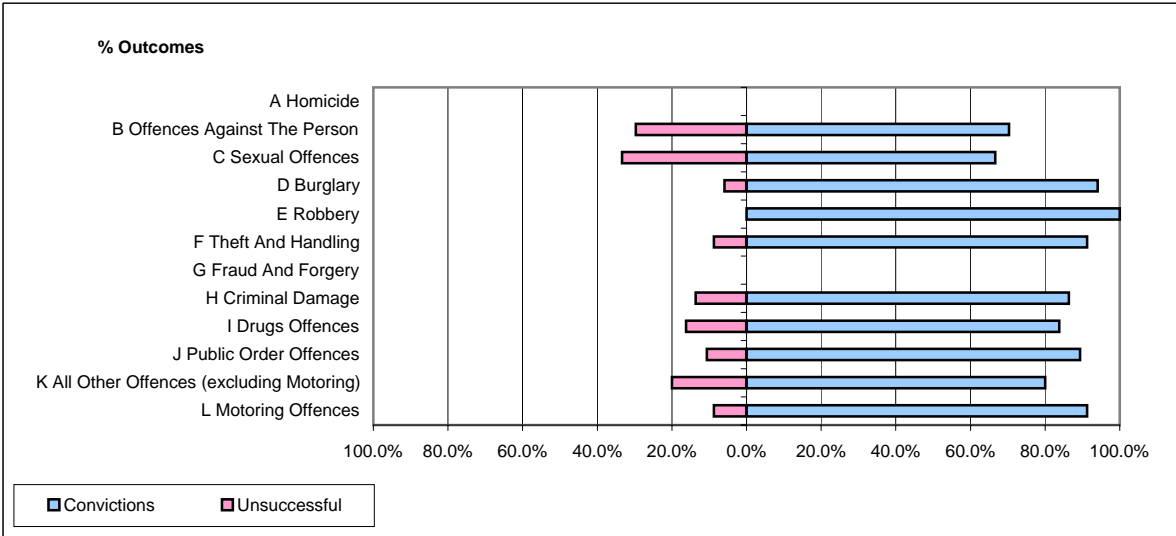


CPS OUTCOMES BY PRINCIPAL OFFENCE CATEGORY

December 2006

P08-Derbyshire



	Convictions		Unsuccessful	
	Number of Defendants	%	Number of Defendants	%
A Homicide	0	#DIV/0!	0	#DIV/0!
B Offences Against The Person	142	70.3%	60	29.7%
C Sexual Offences	8	66.7%	4	33.3%
D Burglary	32	94.1%	2	5.9%
E Robbery	10	100.0%	0	0.0%
F Theft And Handling	94	91.3%	9	8.7%
G Fraud And Forgery	0	#DIV/0!	0	#DIV/0!
H Criminal Damage	38	86.4%	6	13.6%
I Drugs Offences	31	83.8%	6	16.2%
J Public Order Offences	67	89.3%	8	10.7%
K All Other Offences (excluding Motoring)	44	80.0%	11	20.0%
L Motoring Offences	301	91.2%	29	8.8%
Admin Finalisations	0	0.0%	8	100.0%
TOTAL	767	84.3%	143	15.7%